

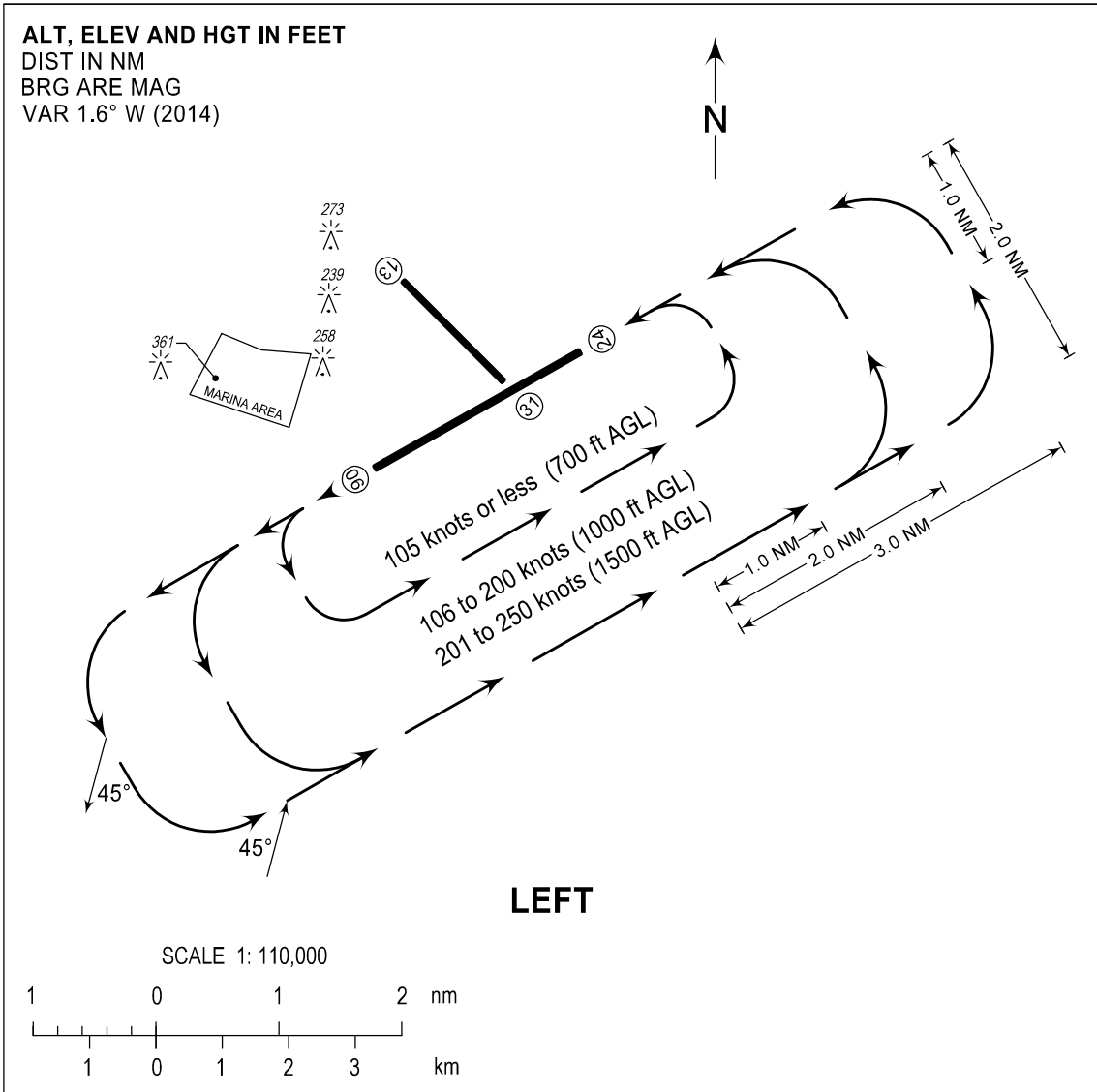
**TRAFFIC
CIRCUIT
CHART**

**AD ELEV
75 ft**

APP - 121.1 / 124.8
TWR - 118.1 / 118.4
GND - 121.8 / 122.0
ATIS - 126.4

MANILA/Ninoy Aquino Intl (RPLL)

RWY 24



CHANGE: Chart Re-indexed and Resolution.

PROCEDURE

- a) Arriving aircraft shall enter the traffic circuit on the downwind leg at an angle of 45 degrees.
- b) Departing aircraft shall follow the traffic circuit and leave the circuit at an angle of 45 degrees.