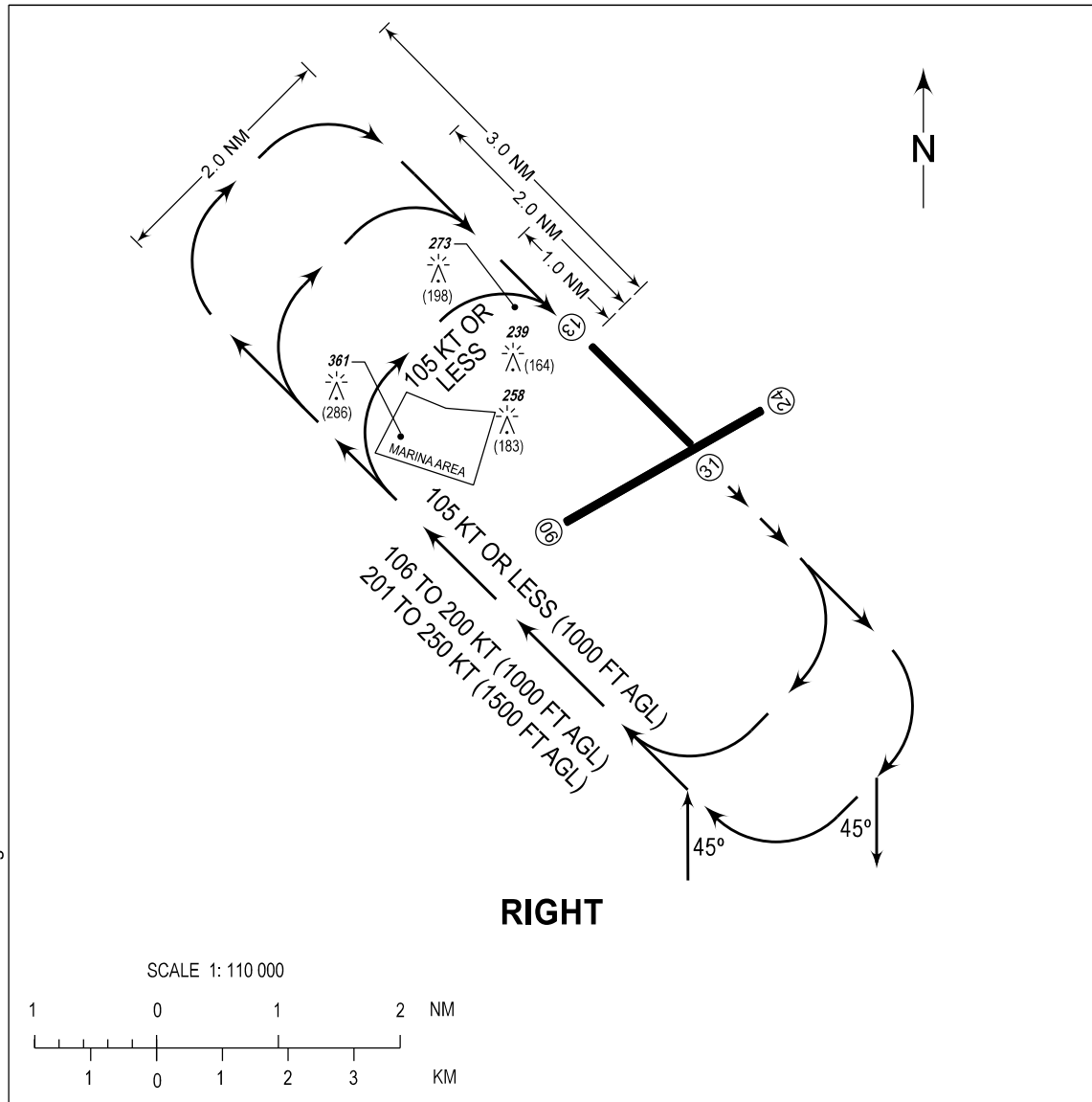


TRAFFIC
CIRCUIT
CHART

AERODROME ELEV
75 FT

APP - 124.4 (FMI)	TWR - 118.1 / 118.4
- 119.9 (FMN)	GND - 121.8 / 122.0
- 124.8 (FMS)	ATIS - 126.4
- 127.7 (SRY)	

MANILA/Ninoy
Aquino Intl (RPLL)
RWY 13



PROCEDURE

- ARRIVING AIRCRAFT SHALL ENTER THE TRAFFIC CIRCUIT ON THE DOWNWIND LEG AT AN ANGLE OF 45 DEGREES.
- DEPARTING AIRCRAFT SHALL FOLLOW THE TRAFFIC CIRCUIT AND LEAVE THE CIRCUIT AT AN ANGLE OF 45 DEGREES.
- 105 KNOTS OR LESS, START DESCENT AFTER MARINA WHILE ON DOWNWIND THEN CONTINUE ON BASE AND TURN FINAL 1.0 NM FROM THRESHOLD 13.

CHANGES: APP FREQ. OBST HGT. Units of Measurement and VAR Deleted. Chart Page Format.