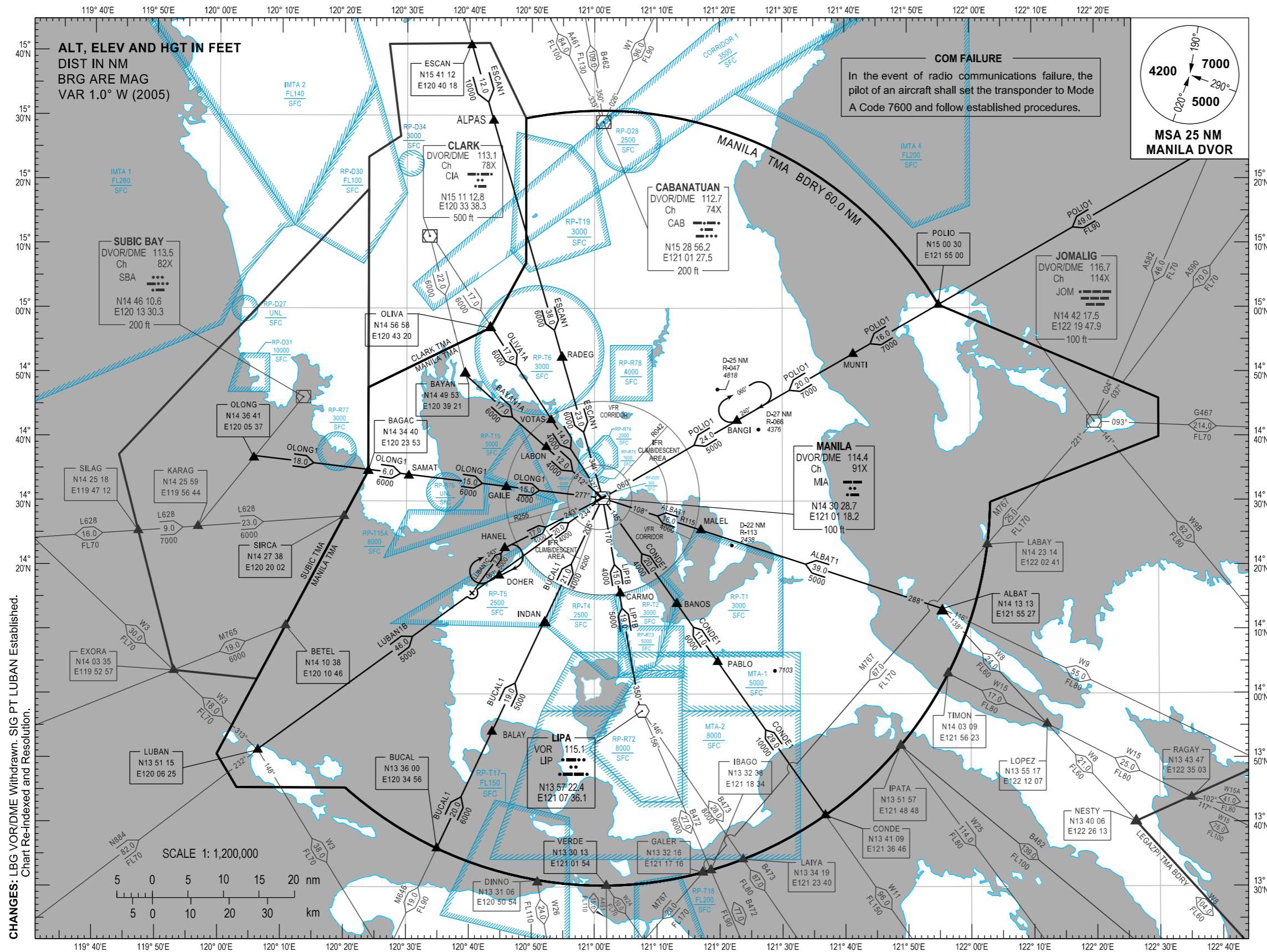


STANDARD ARRIVAL
CHART - INSTRUMENT
(STAR) - ICAO

TRANSITION
ALTITUDE
11,000 ft

ACC - 128.3 (All Sector Back-up)
- 119.3 (N Sector with Extended Range) / 120.5 (E Sector)
- 125.7 (S Sector with Extended Range) / 118.9 (W Sector with Extended Range)
APP - 121.1 / 124.8
TWR - 118.1 / 118.4

MANILA/Ninoy Aquino Intl (RPLL)
RWY 06/24
ALBAT1 BAYAN1A BUCAL1 CONDE1 ESCAN1
LIP1B LUBAN1B/1C OLIVA1A OLONG1 POLIO1



COORDINATES OF REPORTING POINTS

ALPAS	N15 29 11	E120 43 52
BALAY	N13 54 10	E120 43 42
BANGI	N14 42 31	E121 22 45
BANOS	N14 14 03	E121 13 09
CARMO	N14 15 40	E121 04 08
DOHER	N14 18 26	E120 44 49
GAILE	N14 32 13	E120 45 57
HANEL	N14 22 43	E120 45 42
INDAN	N14 11 25	E120 52 03
LABON	N14 38 26	E120 52 19
MALEL	N14 25 30	E121 16 59
MUNTI	N14 52 53	E121 41 19
PABLO	N14 05 00	E121 19 40
SAMAT	N14 33 57	E120 30 22
VOTAS	N14 42 38	E120 53 04

LEGEND:

- R - Radial
- D - Distance from VOR
- - Spot Elevation

CHANGES: LBG VOR/DME Withdrawn, SIG PT LUBAN Established.
Chart Re-indexed and Resolution.

ARRIVAL ROUTE DESCRIPTION

STAR	ROUTE	PROCEDURE	REMARKS
ALBAT1	ALBAT - MALEL - MIA	At ALBAT, track-in on MIA DVOR/DME R108 and descend to 5000FT. At MALEL, descend to 4000FT.	
BAYAN1A	BAYAN - LABON - MIA	At BAYAN intersection, track-in on MIA DVOR/DME R312 and descend to 6000FT. At LABON, descend to 4000FT.	
BUCAL1	M646 - BUCAL - BALAY - INDAN - MIA	At BUCAL intersection, track-in on MIA DVOR/DME R205 and descend to 6000FT. At BALAY, descend to 5000FT. At INDAN, descend to 4000FT.	
CONDE1	W11 - CONDE - PABLO - BANOS - MIA	At CONDE intersection, track-in on MIA DVOR/DME R145 and descend to 10000FT. At PABLO, descend to 6000FT. At BANOS, descend to 4000FT.	
ESCAN1	M646 - ALPAS - RADEG - MIA	At ESCAN intersection, track-in on MIA DVOR/DME R344 to ALPAS. At ALPAS, descend to 6000FT to MIA via RADEG.	
LIP1B	LIP - CARMO - MIA	At LIP VOR, track-in on MIA DVOR/DME R170 and descend to 5000FT to CARMO. At CARMO, descend to 4000FT.	
LUBAN1B	N884 - LUBAN - DOHER - MIA	At LUBAN, track-in on MIA DVOR/DME R234 and descend to 5000FT. At DOHER, descend to 4000FT.	
LUBAN1C	N884 - LUBAN - 25.0 DME FIX - HANEL - MIA	At LUBAN, track-in on MIA DVOR/DME R234 descend to 5000FT. At the 25.0 DME FIX, proceed to HANEL and track-in on MIA DVOR/DME R243. At HANEL, descend to 4000FT.	
OLIVA1A	OLIVA - VOTAS - MIA	At OLIVA intersection, track-in on MIA DVOR/DME R327 and descend to 6000FT to MIA via VOTAS. At VOTAS, descend to 4000FT.	
OLONG1	OLIVA - BAGAC - SAMAT - GAILE - MIA	At BAGAC intersection, track-in on MIA DVOR/DME R277 and descend to 6000FT to GAILE via SAMAT. At GAILE, descend to 4000FT.	
POLIO1	MUPOB - KANDU - POLIO - MUNTI - BANGI - MIA	At MUPOB intersection, track-in on MIA DVOR/DME R060 to POLIO and descend to FL90. At POLIO proceed to BANGI via MUNTI and descend to 7000FT. At BANGI, descend to 5000FT.	