

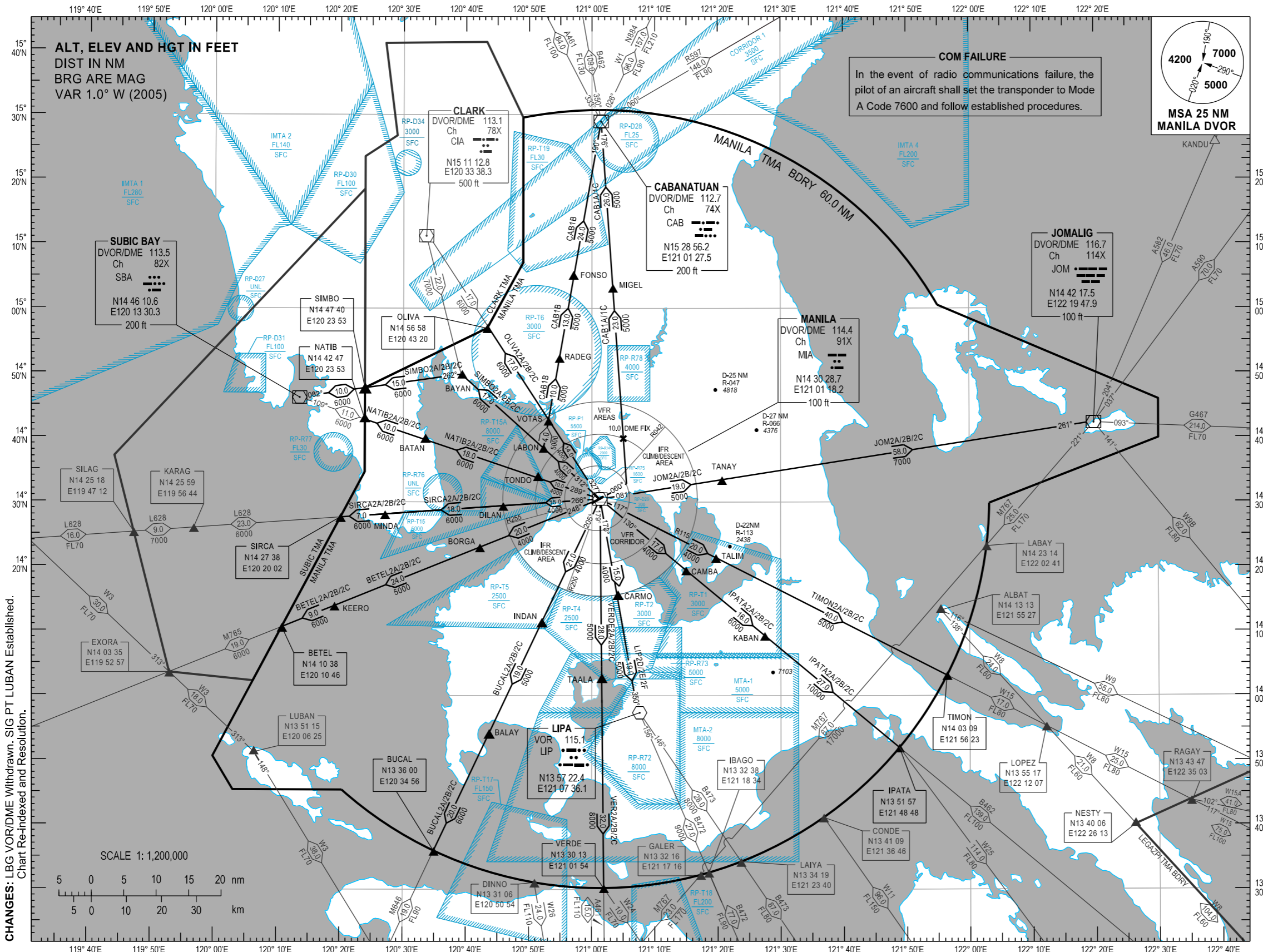
STANDARD DEPARTURE  
CHART - INSTRUMENT  
(SID) - ICAO

MANILA/Ninoy Aquino Intl (RPLL)  
RWY 13/06/24

TRANSITION  
ALTITUDE  
11,000 ft

TWR - 118.1 / 118.4  
APP - 121.1 / 124.8  
ACC - 128.3 (All Sector Back-up)  
- 119.3 (N Sector with Extended Range) / 120.5 (E Sector)  
- 125.7 (S Sector with Extended Range) / 118.9 (W Sector with Extended Range)

BETEL2A/2B/2C BUCAL2A/2B/2C CAB1A/1B/1C IPATA2A/2B/2C  
JOM2A/2B/2C LIP2D/2E/2F NATIB2A/2B/2C OLIVA2A/2B/2C  
SIMBO2A/2B/2C SIRCA2A/2B/2C TIMON2A/2B/2C VERDE2A/2B/2C



BALAY	N13 54 10	E120 43 42
BATAN	N14 39 37	E120 33 33
BAYAN	N14 49 53	E120 39 20
BORGA	N14 23 00	E120 42 11
CAMBA	N14 19 27	E121 14 57
CARMO	N14 15 40	E121 04 08
DILAN	N14 29 26	E120 45 53
FONSO	N15 04 54	E120 57 06
INDAN	N14 11 25	E120 52 03
KABAN	N14 09 19	E121 27 28
KEERO	N14 13 56	E120 19 07
LABON	N14 38 26	E120 52 19
MIGEL	N15 03 14	E121 03 18
MINDA	N14 28 08	E120 27 06
RADEG	N14 52 21	E120 54 50
TAALA	N14 02 49	E121 01 35
TALIM	N14 21 24	E121 19 41
TANAY	N14 33 26	E121 20 39
TONDO	N14 33 44	E120 51 28
VOTAS	N14 42 38	E120 53 04

MINIMUM CROSSING ALTITUDE (MCA)  
FOR THE FOLLOWING REPORTING POINTS

BALAY	6000	KABAN	10000
BATAN	6000	LIPA	8000
CAMBA	6000	MIGEL	5000
CARMO	5000	TALIM	5000
FONSO	5000	TANAY	7000
INDAN	5000	TONDO	6000

LEGEND :

- R - Radial
- D - Distance from VOR
- - Spot Elevation

CHANGES: LBG VOR/DME Withdrawn, SIG PT LUBAN Established.  
Chart Re-indexed and Resolution.

**DEPARTURE ROUTE DESCRIPTION**

SID	TAKE-OFF	PROCEDURES	REMARKS
BETEL2A	RWY06 - Straight-out departure to 3000FT, then right climbing turn	Intercept and track-out on MIA DVOR/DME R248 to cross BORGA at 5000FT or above. Continue climb to BETEL via KEERO to cross KEERO at 6000FT or above.	
BETEL2B	RWY24 - Right turn within 5.0NM		
BETEL2C	RWY13 - Turn left heading 110° to 3000FT, then right climbing turn		
BUCAL2A	RWY06 - Straight-out departure to 3000FT, then right climbing turn	Intercept and track-out on MIA DVOR/DME R205 to cross INDAN at 5000FT or above. Continue climb to BUCAL via BALAY to cross BALAY at 6000FT or above and BUCAL at FL90 or above.	
BUCAL2B	RWY24 - Left turn within 5.0NM		
BUCAL2C	RWY13 - Turn left heading 110° to 3000FT, then right climbing turn		
CAB1A	RWY06 - Straight-out departure to 3000FT, then left climbing turn	Intercept and track-in on CAB DVOR/DME R176 to cross 10.0 DME fix at 5000FT or above. Continue climb to CAB DVOR/DME via MIGEL.	Crossing altitude at CAB DVOR/DME shall conform to the MEA of the particular airway.
CAB1B	RWY24 - Straight-out departure to 3000FT, then right climbing turn	Intercept and track-in on CAB DVOR/DME R190 to cross LABON at 5000FT or above. Continue climb to CAB DVOR/DME via VOTAS, RADEG and FONSO.	
CAB1C	RWY13 - Turn left heading 110° to 3000FT, then left climbing turn	Intercept and track-in on CAB DVOR/DME R176 to cross 10.0 DME fix at 5000FT or above. Continue climb to CAB DVOR/DME via MIGEL.	
IPATA2A	RWY06 - Straight-out departure to 3000FT, then right climbing turn	Intercept and track-out on MIA DVOR/DME R130 to cross CAMBA at 6000FT or above. Continue climb to IPATA via KABAN to cross KABAN at 10000FT or above.	
IPATA2B	RWY24 - Left turn within 5.0NM		
IPATA2C	RWY13 - Turn left heading 110° to 3000FT, then right climbing turn		
JOM2A	RWY06 - Straight-out departure to 3000FT, then right climbing turn	Intercept and track-out on MIA DVOR/DME R081 to cross TANAY at 7000FT or above. Continue climb to JOM DVOR/DME.	Crossing altitude at JOM DVOR/DME shall conform to the MEA of the particular airway.
JOM2B	RWY24 - 180° turn to the left within 5.0NM		
JOM2C	RWY13 - Turn left heading 110° to 3000FT, then left climbing turn		
LIP2D	RWY06 - Straight-out departure to 3000FT, then right climbing turn	Intercept and track-out on MIA DVOR/DME R170 to cross CARMO at 5000FT or above. Continue climb to cross LIP VOR.	Crossing altitude at LIP VOR shall conform to the MEA of the particular airway.
LIP2E	RWY24 - Left turn within 5.0NM		Crossing restriction at LIP VOR may be increased by ATC subject to RP-R72 activities.
LIP2F	RWY13 - Turn left heading 110° to 3000FT, then right climbing turn		
NATIB2A	RWY06 - Straight-out departure to 3000FT, then left climbing turn avoiding RP-P1*	Intercept and track-out on MIA DVOR/DME R289 to cross TONDO at 6000FT or above. Continue climb to NATIB via BATAN.	
NATIB2B	RWY24 - Straight-out departure to 3000FT, then right climbing turn		
NATIB2C	RWY13 - Turn left heading 110° to 3000FT, then right climbing turn		
OLIVA2A	RWY06 - Straight-out departure to 3000FT, then left climbing turn avoiding RP-P1*	Intercept and track-out on MIA DVOR/DME R327 to cross VOTAS at 6000FT or above. Continue climb to OLIVA.	
OLIVA2B	RWY24 - Straight-out departure to 3000FT, then right climbing turn		
OLIVA2C	RWY13 - Turn left heading 110° to 3000FT, then right climbing turn		
SIMBO2A	RWY06 - Straight-out departure to 3000FT, then left climbing turn avoiding RP-P1*	Intercept and track-out on MIA DVOR/DME R312 to cross LABON at 6000FT or above. Continue climb to BAYAN. At BAYAN, turn left to intercept and track-in on SBA DVOR/DME R082 to SIMBO.	
SIMBO2B	RWY24 - Straight-out departure to 3000FT, then right climbing turn		
SIMBO2C	RWY13 - Turn left heading 110° to 3000FT, then right climbing turn		
SIRCA2A	RWY06 - Straight-out departure to 3000FT, then right climbing turn	Intercept and track-out on MIA DVOR/DME R266 to cross DILAN at 6000FT or above. Continue climb to SIRCA via MINDA.	
SIRCA2B	RWY24 - Straight-out departure to 3000FT, then right climbing turn		
SIRCA2C	RWY13 - Turn left heading 110° to 3000FT, then right climbing turn		
TIMON2A	RWY 06 - Straight-out departure to 3000FT, then right climbing turn	Intercept and track-out on MIA DVOR/DME R117 to cross TALIM at 5000FT or above. Continue climb to cross TIMON at FL80 or above.	
TIMON2B	RWY24 - Left turn within 5.0NM		
TIMON2C	RWY13 - Turn left heading 110° to 3000FT, then right climbing turn		
VERDE2A	RWY06 - Straight-out departure to 3000FT, then right climbing turn	Intercept and track-out on MIA DVOR/DME R179 to cross TAALA at 8000FT or above. Continue climb to cross VERDE at FL110 or above.	Crossing restriction at TAALA may be increased by ATC subject to RP-R72 activities.
VERDE2B	RWY24 - Left turn within 5.0NM		
VERDE2C	RWY13 - Turn left heading 110° to 3000FT, then right climbing turn		

NOTES:

1. From sunrise to sunset, IFR departures on RWY06/24 shall climb in the IFR Climb/Descent Area so as to cross the VFR area at 3000FT or above.
  2. IFR jet departures with Stage III engines on RWY13 may be allowed from sunrise to sunset.
  3. IFR propeller-type departures on RWY13 may be allowed from sunrise to sunset.
  4. IFR departures on RWY31 may be allowed during VMC from sunrise to sunset.
- \* RP-P1 - Malacañang Palace (Official residence of the President of the Philippines).

CHANGE: Page Re-indexed.