

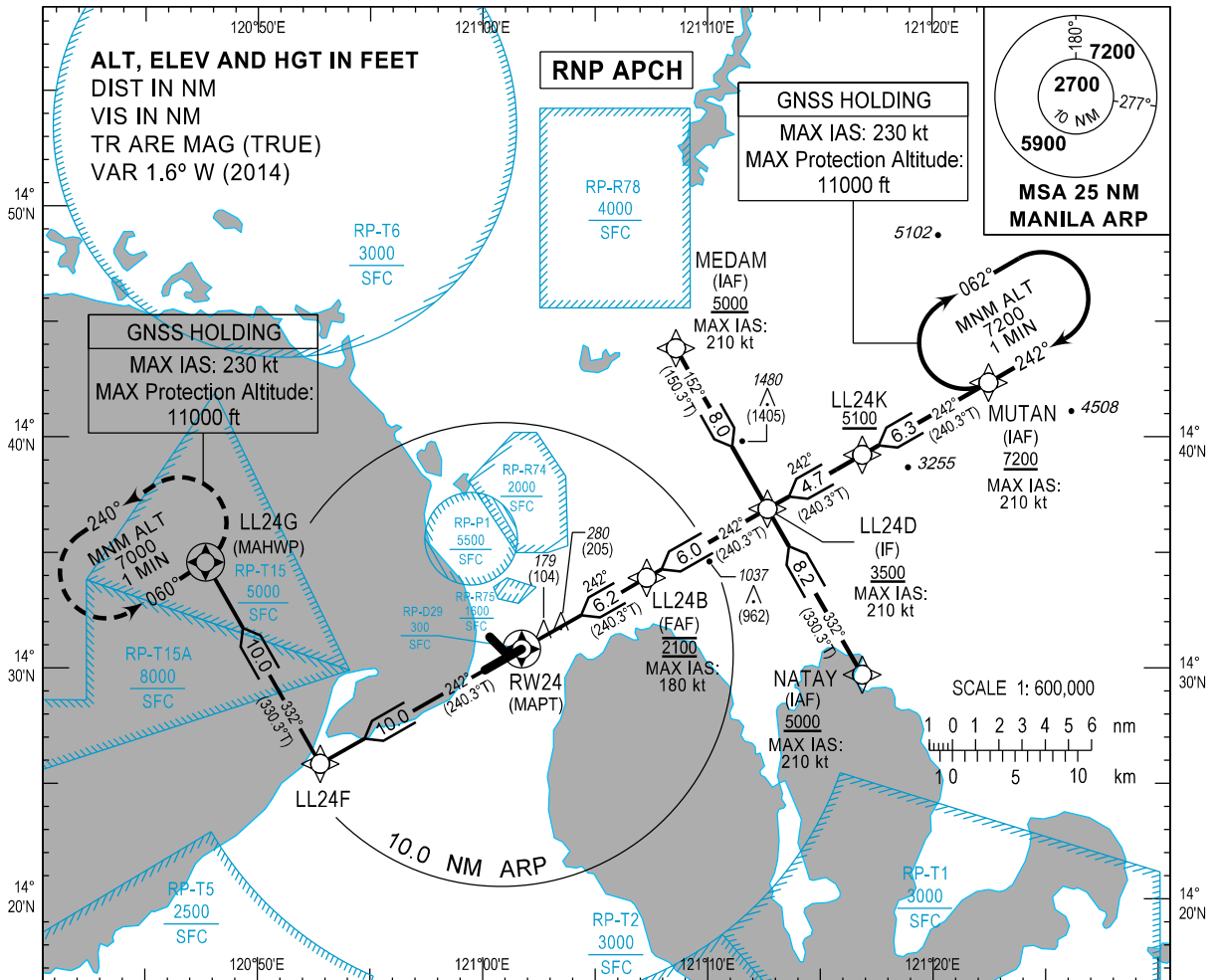
**INSTRUMENT  
APPROACH  
CHART - ICAO**

**AD ELEV 75 ft**  
HEIGHTS RELATED TO  
THR RWY 24

APP - 121.1 / 124.8  
TWR - 118.1 / 118.4  
GND - 121.8 / 122.0

**MANILA/Ninoy Aquino Intl (RPLL)**

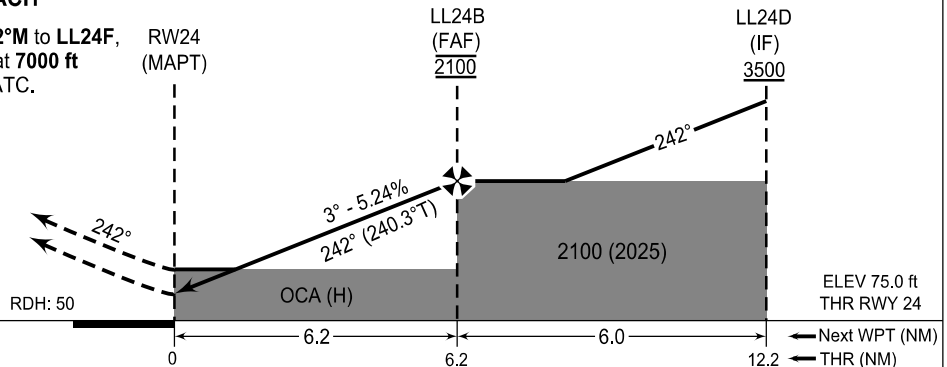
**RNP RWY 24**



TRANSITION ALT : 11000 ft  
TRANSITION LEVEL : FL130

**MISSED APPROACH**

Climb on course **242°M** to **LL24F**,  
to **LL24G** and hold at **7000 ft**  
or as instructed by ATC.



OCA/H	A	B	C	D		
LNAV/VNAV	680 (605)					
LNAV	770 (695)					
NEW PROC	NM TO THR	5.3	5.0	4.0	3.0	2.0
	ALT	1800	1720	1400	1080	760
	HGT	(1725)	(1645)	(1325)	(1005)	(685)

**WAYPOINT LIST**

Waypoint Name	Latitude	Longitude	Type
LL24B	N14 36 55	E121 07 18	Fly-by
LL24D	N14 36 54	E121 12 40	Fly-by
LL24F	N14 25 51	E120 52 47	Fly-by
LL24G	N14 34 35	E120 47 41	Flyover
LL24K	N14 39 14	E121 16 52	Fly-by
MEDAM	N14 43 51	E121 08 03	Fly-by
MUTAN	N14 42 21	E121 22 30	Fly-by
NATAY	N14 29 43	E121 16 52	Fly-by
RW24	N14 30 50	E121 01 44	Flyover

**PROPOSED CODING FOR INSTRUMENT APPROACH RNP RWY24**

SEQ. NO.	PD	W/P ID	Flyover	Course Track °M (°T)	Magnetic Variation	Distance (NM)	TD	ALT (FT)	Speed (knots)	VPA (°)	Nav. Spec	Transition ID
10	IF	MEDAM	N	-	-	-	-	+5000	210	-	RNP APCH	MEDAM
20	TF	LL24D	N	152° (150.3°)	-	8.0	-	+3500	210	-	RNP APCH	MEDAM
10	IF	NATAY	N	-	-	-	-	+5000	210	-	RNP APCH	NATAY
20	TF	LL24D	N	332° (330.3°)	-	8.2	-	+3500	210	-	RNP APCH	NATAY
10	IF	MUTAN	N	-	-	-	-	+7200	210	-	RNP APCH	MUTAN
20	TF	LL24K	N	242° (240.3°)	-	6.3	-	+5100	-	-	RNP APCH	MUTAN
30	TF	LL24D	N	242° (240.3°)	-	4.7	-	+3500	210	-	RNP APCH	MUTAN
10	IF	LL24D	N	-	-	-	-	+3500	210	-	RNP APCH	-
20	TF	LL24B	N	242° (240.3°)	-	6.0	-	@2100	180	-	RNP APCH	-
30	TF	RW24	Y	242° (240.3°)	-	6.2	-	+125	-	-3.0	RNP APCH	-
10	CF	LL24F	N	242° (240.3°)	-	10.0	-	-	-	-	RNP APCH	-
20	TF	LL24G	Y	332° (330.3°)	-	10.0	-	+7000	-	-	RNP APCH	-