

AD 2 AERODROMES

Note: The following sections in this chapter are intentionally left blank: AD-2.16, AD-2.21, AD-2.23, AD-2.25

RPMR AD 2.1 AERODROME LOCATION INDICATOR AND NAME

RPMR - TAMBLER PRINCIPAL AIRPORT (Class 1)

RPMR AD 2.2 AERODROME GEOGRAPHICAL AND ADMINISTRATIVE DATA

1	ARP coordinates and site at AD	060329N 1250546E.
2	Direction and distance from (city)	18 KM southwest from the city.
3	Elevation/Reference temperature	503 FT.
4	Geoid undulation at AD ELEV PSN	Nil.
5	MAG VAR/Annual Change	1°W (2021) / 6.0' increasing.
6	AD Operator, address, telephone, telefax, telex, AFS	Civil Aviation Authority of the Philippines Tambler Airport General Santos City 9500 South Cotabato Phone: (+63) (083) 500-9490 (Office of the Airport Manager) Email: generalsantos_airport@caap.gov.ph
7	Types of traffic permitted (IFR/VFR)	IFR-VFR.
8	Remarks	Communication Navigation Surveillance Service (CNSS) Phone: (+63) (083) 858-2722 Email: gensan_ans@caap.gov.ph Power Plant Email: alpt_gensan@gmail.com Aerodrome Rescue and Fire Fighting (ARFF) Email: arffrpmr@gmail.com Civil Aviation Authority of the Philippines Security and Intelligence (CSI) Email: csisgensan@gmail.com Human Resources (HR) Email: caapgensan.hr@gmail.com Budget Email: budget.caapgensan@gmail.com Accounting Phone: (+63) (083) 500-9492 Email: acctg.caapgsa@gmail.com

RPMR AD 2.3 OPERATIONAL HOURS

1	AD Operator	2200 - 1000.
2	Customs and immigration	On-call or upon request.
3	Health and sanitation	On-call or upon request.
4	AIS Briefing Office	Nil.
5	ATS Reporting Office (ARO)	2200 - 1000.
6	MET Briefing Office	2200 - 1000.
7	ATS	2200 - 1000.
8	Fuelling	2200 - 1000.
9	Handling	H24.

10	Security	H24.
11	De-icing	Nil.
12	Remarks	Airport Operations: 2200 - 1000. Early opening and extension of operation subject to approval by the Director General. Fueling: Available Phoenix gas tanker with prior arrangement.

RPMR AD 2.4 HANDLING SERVICES AND FACILITIES

1	Cargo-handling facilities	Cargo terminal operated by Philippine Airlines (PAL). Cebu Pacific has its own cargo terminal facilities.
2	Fuel/oil types	Jet A-1 fuel.
3	Fuelling facilities/capacity	Phoenix Phone: 0917-3015956 (mobile) R-209 Tank - 19000 liters R-234 Tank - 20000 liters Storage Tank Capacity: Tank 1 - 40000 liters Tank 2 - 40000 liters
4	De-icing facilities	Nil.
5	Hangar space for visiting aircraft	Nil.
6	Repair facilities for visiting aircraft	Nil.
7	Remarks	Nil.

RPMR AD 2.5 PASSENGER FACILITIES

1	Hotels	City proper and nearby Barangay Fatima.
2	Restaurants	Available in the airport and in the city.
3	Transportation	Bus (Airport to Koronadal and vice versa), Taxi, Rent-a-car, E-jeep, and Transportation Network Vehicle Service (Grab).
4	Medical facilities	CAA of the Philippines (CAAP) First-aid clinic. Hospital in the city.
5	Bank and Post Office	Land Bank of the Philippines (LBP) automated teller machines (ATM) available at the passenger terminal building.
6	Tourist Office	Nil.
7	Remarks	No post office at the airport.

RPMR AD 2.6 RESCUE AND FIRE FIGHTING SERVICES

1	AD category for fire fighting	Category 9.
2	Rescue equipment	Three (3) fire trucks [One (1) Oshkosh (12000 liters), one (1) Oshkosh (6000 liters), and one (1) Morita (10000 liters)].
3	Capability for removal of disabled aircraft	Capable and equipped of conducting aircraft removal operations of disabled aircraft with sizes up to an A330 and B747 through CAAP-GSIA contracted third party Gemma Construction Supply. Disabled Aircraft Removal Plan (DARP) Coordinator: Daniel Facturanan Phone: 0916-9372931 (mobile) Gemma Construction Supply Phone: (+63) (083) 228-2366, 0936-9340447 (mobile)
4	Remarks	Foam meeting performance: Level B.

RPMR AD 2.7 SEASONAL AVAILABILITY - CLEARING

1	Types of clearing equipment	Tree tractor grass mower.
2	Clearance priorities	Nil.
3	Remarks	Nil.

RPMR AD 2.8 APRONS, TAXIWAYS AND CHECK LOCATIONS/POSITIONS DATA

1	Apron surface and strength	Apron Surface: CONC. Strength: 608/R/B/X/U.
2	Taxiway width, surface and strength	TWY C Width: 23 M. Surface: CONC. Strength: 608/R/B/X/U. TWY D Width: 23 M. Surface: CONC. Strength: 608/R/B/X/U.
3	Altimeter checkpoint location and elevation	Nil.
4	VOR checkpoints	Nil.
5	INS checkpoints	Nil.
6	Remarks	Apron dimensions: 513 M x 168 M. Total area: 86169 square meters.

RPMR AD 2.9 SURFACE MOVEMENT GUIDANCE AND CONTROL SYSTEM AND MARKINGS

1	Use of aircraft stand ID signs, TWY guide lines and visual docking/parking guidance system of aircraft stands	Available.
2	RWY and TWY markings and LGT	RWY and TWY markings are available but not lighted. Only signages are available and lighted.
3	Stop bars and RWY guard lights	Stop bar markings available but not lighted. Guard light available.
4	Other RWY protection measures	RWY edge and THR markings available.
5	Remarks	Nil.

RPMR AD 2.10 AERODROME OBSTACLES

In approach/TKOF areas			In circling area and at AD		Remarks
1			2		
RWY/Area affected	Obstacle type Elevation Markings/LGT	Coordinates	Obstacle type Elevation Markings/LGT	Coordinates	
a	b	c	a	b	
17	Mt. Matutum 7500 FT	062140.0N 1250433.7E	Nil	Nil	Nil
17/TKOF	Terrain 6546 FT	060753.5N 1243903.8E			
	Terrain 4049 FT	062835.3N 1250957.6E			

In approach/TKOF areas			In circling area and at AD		Remarks
1			2		3
RWY/Area affected	Obstacle type Elevation Markings/LGT	Coordinates	Obstacle type Elevation Markings/LGT	Coordinates	
a	b	c	a	b	
	Terrain 3239 FT	061814.3N 1250957.6E	Nil	Nil	Nil
	Terrain 545 FT	060212.7N 1250555.6E			
	Terrain 536 FT	060215.6N 1250550.5E			
17/APCH	Terrain 5558 FT	061406.3N 1243657.7E			
	Terrain 3311 FT	061733.5N 1244114.1E			
	Terrain 2829 FT	061716.1N 1250922.1E			
	Terrain 2822 FT	062212.8N 1245202.1E			
	Terrain 2133 FT	061438.3N 1250844.6E			
	Terrain 2028 FT	061631.0N 1250425.2E			
	Terrain 949 FT	060825.0N 1250440.1E			
	Terrain 830 FT	060634.0N 1250455.2E			
35/APCH	Terrain 6546 FT	060753.5N 1243903.8E			
	Terrain 3206 FT	055808.5N 1244745.6E			
	Terrain 1214 FT	060531.1N 1250340.1E			
	Terrain 1054 FT	055710.1N 1250507.1E			
	Terrain 640 FT	060152.1N 1250528.1E			
17/35	Terrain 7609 FT	062132.3N 1250424.6E			
	Terrain 6270 FT	060444.3N 1245309.6E			

RPMR AD 2.11 METEOROLOGICAL INFORMATION PROVIDED

1	Associated MET Office	Philippine Atmospheric, Geophysical and Astronomical Services Administration (PAGASA).
2	Hours of service MET Office outside hours	H24. -
3	Office responsible for TAF preparation Periods of validity	- -
4	Trend forecast Interval of issuance	- -
5	Briefing/consultation provided	METAR.
6	Flight documentation Language(s) used	- English.
7	Charts and other information available for briefing or consultation	SID and STAR Charts.
8	Supplementary equipment available for providing information	WDI/Runway Temperature Indicator/QNH.
9	ATS units provided with information	Tambler Tower/Approach.
10	Additional information (limitation of service, etc.)	Nil.

RPMR AD 2.12 RUNWAY PHYSICAL CHARACTERISTICS

Designations RWY NR	TRUE BRG	Dimensions of RWY (M)	Strength (PCR) and surface of RWY and SWY	THR coordinates RWY end coordinates THR geoid undulation	THRelevation and highest elevation of TDZ of precision APP RWY	Slope of RWY-SWY
1	2	3	4	5	6	7
17	173.00°	3227 X 45	608/R/B/X/U CONC	060421.39N 1250539.95E	THR 503 FT TDZ 503 FT	Nil
35	353.00°	3227 X 45	608/R/B/X/U CONC	060237.10N 1250552.68E	THR 463 FT TDZ 463 FT	Nil
SWY dimensions (M)	CWY dimensions (M)	Strip dimensions (M)	RESA dimensions (M)	Location/ description of arresting system	OFZ	Remarks
8	9	10	11	12	13	14
117 X 45	300 x 300	Nil	90 x 60	Nil	Nil	Nil
116 X 45	300 x 300	Nil	90 x 60	Nil	Nil	Nil

RPMR AD 2.13 DECLARED DISTANCES

RWY Designator	TORA (M)	TODA (M)	ASDA (M)	LDA (M)	Remarks
1	2	3	4	5	6
17	3227	3527	3344	3227	Nil
35	3227	3527	3343	3227	Nil

RPMR AD 2.14 APPROACH AND RUNWAY LIGHTING

RWY Designator	APCH LGT type, LEN, INTST	THR LGT colour, WBAR	VASIS, (MEHT), PAPI	TDZ, LGT LEN
1	2	3	4	5
17	PALS, 900 M, LIH	THR LGT Green 8	PAPI 3.0° Left/Right (69.63 FT)	Nil
35	Nil	THR LGT Green 8 RTIL Flashing white light	PAPI 3.0° Left/Right (58.55 FT)	Nil
RWY Centre Line LGT LEN, spacing, colour, INTST	RWY Edge LGT LEN, spacing, colour, INTST	RWY End LGT colour, WBAR	SWY LGT LEN, colour	Remarks
6	7	8	9	10
Nil	3107 M, 60 M, Amber, LIH	Red 8	Nil	<p>PALS Color: White Number of barrettes: 30 barrettes. Number of fixtures per barrette: 5 light fixtures. Spacing between barrettes: 30 M. Location of crossbar: 300 M away from THR.</p> <p>PAPI Path width: 0.33°. Light intensity: CLR. Light transition: Distinct. Visibility range: 5 NM. Distance from THR: 434 M. Distance of unit D from RWY edge: 15 M. Distance between units: 9 M. Horizontal angular CLR: CLR.</p>

RWY Centre Line LGT LEN, spacing, colour, INTST	RWY Edge LGT LEN, spacing, colour, INTST	RWY End LGT colour, WBAR	SWY LGT LEN, colour	Remarks
6	7	8	9	10
Nil	3107 M, 60 M, Amber, LIH	Red 8	Nil	<p>RWY THR Identification Light (RTIL) Interval: 60-120 flashes per minute. Distance from RWY edge: 15 M. Intensity: LIH.</p> <p>PAPI Path width: 0.33°. Light intensity: CLR. Light transition: Distinct. Visibility range: 5 NM. Distance from THR: 365 M. Distance of unit D from RWY edge: 15 M. Distance between units: 9 M. Horizontal angular CLR: CLR.</p>

RPMR AD 2.15 OTHER LIGHTING, SECONDARY POWER SUPPLY

1	ABN/IBN location, characteristics and hours of operation	Location: 060329.74N 1250535.77E. Characteristics: Operational 15 flashes per minute. HR of OPS: Available upon request.
2	LDI location and LGT Anemometer location and LGT	Anemometer RWY 17: 060409.00N 1250537.00E RWY 35: 060204.00N 1250548.00E.
3	TWY edge and centre line lighting	Edge: Lighted; Intensity: LIH. Center line: Nil.
4	Secondary power supply/switch-over time	Secondary power supply to all lighting at aerodrome. Switch-over time of 15 seconds.
5	Remarks	WDI RWY 17: 060411.90N 1250543.90E, Lighted. RWY 35: 060246.80N 1250548.90E, Lighted.

RPMR AD 2.17 ATS AIRSPACE

1	Designation and lateral limits	<p>TAMBLER AERODROME TRAFFIC ZONE (ATZ): A circle radius 5 NM centered on 060329N 1250546E (ARP).</p> <p>TAMBLER CONTROL ZONE (CTR): A circle radius 10 NM centered on 060329N 1250546E (ARP).</p> <p>TAMBLER TERMINAL CONTROL AREA (TMA): From 063758N 1243357E - 065417.1N 1245516.5E (LATIA) - 064206N 1252810E - 052958N 1253543E - 052951N 1244856E - 061723N 1243133E - 063758N 1243357E.</p>
---	--------------------------------	---

2	Vertical limits	ATZ: SFC up to but excluding 2000 FT. CTR: SFC up to 1500 FT. TMA: 1500 FT to FL200 (excluding ATZ and ATS routes at FL160 and above).
3	Airspace classification	ATZ - B; CTR - D; TMA - D; ATS routes inside TMA below FL160 - D; ATS routes inside TMA above FL160 - A.
4	ATS unit call sign Language(s)	ATZ - Tambler Tower. CTR/TMA - Tambler Approach. English.
5	Transition altitude	11000 FT.
6	Hours of applicability	Nil.
7	Remarks	Nil.

RPMR AD 2.18 ATS COMMUNICATION FACILITIES

Service Designation	Call Sign	Frequency	SATVOICE number	Logon Address	Hours of operation	Remarks
1	2	3	4	5	6	7
TWR	Tambler Tower	118.4 MHZ 6802.5 KHZ 3671 KHZ	Nil	Nil	2200 - 1000	PRI FREQ. P/P PRI FREQ (Davao Network). P/P SRY FREQ.
APP	Tambler Approach	119.1 MHZ 118.2 MHZ				PRI FREQ. SRY FREQ.

RPMR AD 2.19 RADIO NAVIGATION AND LANDING AIDS

Type of aid, MAG VAR, Type of supported OP (for VOR/ILS/MLS, give declination)	ID	Frequency	Hours of operation	Position of transmitting antenna coordinates	Elevation of DME transmitting antenna	Remarks
1	2	3	4	5	6	7
DVOR/DME	GSA	114.5 MHZ/ CH92X	H24	060432.4N 1250531.9E	600 FT	DVOR radials from Radial 245 to Radial 306 and Radial 353 to Radial 360 are unusable beyond 15 NM due to obstruction.
ILS 17 LOC	IGSA	109.5 MHZ	H24	060227.4N 1250553.9E	Nil	Output: 20 watts. Width: 3.49°. Modulation: 40%.
DME		CH32X	H24	060409.7N 1250537.5E	Nil	Output: 100 watts.
GP		332.6 MHZ	H24	060409.7N 1250537.5E	Nil	Output: 10 watts. Angle: 3.01°. Modulation: 80%.

RPMR AD 2.20 LOCAL AERODROME REGULATIONS

1. Airport regulations

1.1 General

1.1.1 No wide body aircraft (A330 and above category) shall taxi behind the parked B777-300ER. However, narrow body aircraft (A321 and below category) shall be allowed to taxi behind B777-300ER.

2. Arrival

2.1 Tumbler Tower upon issuance of taxi instructions shall include parking bay assignment.

2.2 Aircraft entering the apron must follow closely the apron taxi guide lines to ensure safe distance between taxiing and parked aircraft.

2.3 Unless otherwise instructed by ATC, all aircraft landing RWY 17 shall taxi-in via TWY C. Aircraft landing on RWY 35 shall taxi-in via TWY D.

2.4 All parking bays are allocated on a first come first serve basis with due regard to aircraft type, location of airline handling facilities and prevailing traffic.

2.5 All aircraft may taxi-in with their own power to their respective bay assignment.

2.5.1 For A330 and above, taxi-in towards parking bay assignment must be assisted with wing marshals/walkers whenever another wide body (heavy) aircraft is parked on the adjacent parking bay.

2.5.2 For A321 and below, marshal/walker may not be necessary.

2.6 Bays NR 1 and 7 are exclusive only for aircraft A321 and lower category. Bays NR 2, 3, 4, 5 and 6 are for B747, B777 and lower category.

3. Departure

3.1 Clearance from Tumbler Tower must be obtained prior to commencing push-back or taxi.

3.2 All aircraft push-back and tow-out operations must be assisted by wing marshals/walkers.

3.3 For RWY 17 departure, aircraft must be pushed-back at designated start-up point parallel with the runway facing North or as instructed by ATC, aircraft may be towed until holding point of TWY D.

3.4 For RWY 35 departure, aircraft must be pushed-back at designated start-up point parallel with the runway facing South or as instructed by ATC, aircraft may be towed until holding point of TWY C or portion of TWY C.

4. Parking

4.1 General aviation and military aircraft shall park, load and/or unload passengers at Bays NR 1, 2 and 7 or as instructed by ATC.

4.2 General aviation and military aircraft intending to remain overnight (RON) shall park their aircraft at any of the Bays NR 1, 2 and 7 or as instructed by ATC.

4.3 Parking Bays

Bay Number	Coordinates	Aircraft Type	Restrictions/Remarks
1	060332.80N 1250558.30E	A321 and lower category aircraft.	No wide body aircraft (A330 and above category) is allowed to taxi behind B777-300ER.
2	060330.80N 1250559.00E	B747, B777 and lower category aircraft.	
3	060328.10N 1250559.30E	B747, B777 and lower category aircraft.	
4	060325.70N 1250559.60E	B747, B777 and lower category aircraft.	
5	060323.30N 1250600.00E	B747, B777 and lower category aircraft.	
6	060320.50N 1250600.30E	B747, B777 and lower category aircraft.	
7	060318.50N 1250600.10E	A321 and lower category aircraft.	

RPMR AD 2.22 FLIGHT PROCEDURES

1. General Procedures for VFR Flights

- 1.1 The following air traffic procedures shall apply to all VFR flights when entering, leaving, operating within, or transiting the vicinity of Tambler ATZ.
 - 1.1.1 All departing VFR flights shall contact Tambler Tower frequency on 118.4 MHZ for start-up, taxi and take-off clearance and shall maintain a listening watch until instructed to leave the frequency or to switch to Tambler Approach frequency on 119.1 MHZ while within Tambler TMA.
 - 1.1.2 All arriving VFR flights shall remain on listening watch with Tambler Approach frequency on 119.1 MHZ upon entering Tambler TMA or establish two-way radio contact with Tambler Tower on frequency 118.4 MHZ 20 NM to the airport.
 - 1.1.3 ATC instructions shall be acknowledged and complied with.
 - 1.1.4 When operating within Tambler TMA, pilots of VFR aircraft are to conform to the following altitude restriction unless authorized by ATC:
 - a. from 5 NM up to 10 NM from Tambler ARP not higher than 1500 FT.
 - 1.1.5 Any deviation from the procedures shall be subject to ATC approval.

2. Arrival and Departure Procedures

2.1 VFR Procedures RWY 17

2.1.1 Departure

- a. Northeast Bound: After airborne, make a left downwind departure towards BLOOMFIELDS. Continue towards TINAGAKAN via West of UST by following the Digos - Makar Road and proceed to destination or as instructed by ATC.
- b. Northwest Bound: After airborne, make a left downwind departure. Abeam BLOOMFIELDS request clearance to cross final approach RWY 17 towards GLAMANG. Report when cleared of the final approach. Continue towards West of DOLEFIL via DOLORES by keeping to the West side of Marbel - Makar Road and proceed to destination or as instructed by ATC.
- c. Southeast Bound: Make a straight-out departure. Turn left, report 5 NM out and proceed to destination or as instructed by ATC.
- d. Southwest Bound: Make a straight-out departure. Turn right towards SOLAR FARM and proceed to destination or as instructed by ATC.

2.1.2 Arrival

- a. From the Northeast: Report approaching East of TINAGAKAN. Continue towards UST by keeping to the East side of Digos - Makar Road. Turn right towards MAKAR via ROBINSONS and request clearance to join left base of RWY 17 or proceed as instructed by ATC.
- b. From the Northwest: Report approaching DOLEFIL by keeping to the East side of Marbel - Makar Road. Continue towards PGH. Request clearance to cross final approach RWY 17 flying not above 1500 FT towards BRIGADA. Report when cleared of the final approach. Request clearance to join left base of RWY 17 or proceed as instructed by ATC.
- c. From the Northwest via KLINAN GYM: Report approaching DOLEFIL by keeping to the East side of Marbel - Makar Road. Continue towards PGH and proceed East to cross the final approach of RWY 17 flying not above 2000 FT towards KLINAN GYM. Report when cleared

of the final approach. Turn right towards BRIGADA by keeping to the East side of Klinan 6 - Cannery Road. Request clearance to join left base of RWY 17 or proceed as instructed by ATC.

- d. From the Southeast: Report approaching MSV PORT. Request clearance to join left downwind of RWY 17 or proceed as instructed by ATC.
- e. From the Southwest: Report approaching MAASIM by following the South Cotabato - Sarangani Road. Continue towards COAL PLANT. Request clearance to cross the final approach of RWY 35 flying not above 1500 FT towards MSV PORT. Report when cleared of the final approach. Request clearance to join left downwind of RWY 17 or proceed as instructed by ATC.

2.2 VFR Procedures RWY 35

2.2.1 Departure

- a. Northeast Bound: After airborne, turn right towards BLOOMFIELDS. Continue towards TINAGAKAN via West of UST by following the Digos - Makar Road and proceed to destination or as instructed by ATC.
- b. Northwest Bound: After airborne, turn left towards GLAMANG. Continue towards DOLEFIL via DOLORES by keeping to the West side of Marbel - Makar Road and proceed to destination or as instructed by ATC.
- c. Southeast Bound: After airborne, make a right downwind departure towards FISH PORT. Report 5 NM out and proceed to destination or as instructed by ATC.
- d. Southwest Bound: After airborne, make a right downwind departure. Request clearance to cross final approach of RWY 35 towards SOLAR FARM. Report when cleared of the final approach and proceed to destination or as instructed by ATC.

2.2.2 Arrival

- a. From the Northeast: Report approaching East of TINAGAKAN. Continue towards UST by keeping to the East side of Digos - Makar Road. Turn right towards MAKAR via ROBINSONS and request clearance to join right downwind of RWY 35 or proceed as instructed by ATC.
- b. From the Northwest: Report approaching DOLEFIL by keeping to the East side of Marbel - Makar Road. Continue towards PGH. Request clearance to cross final approach RWY 17 flying not above 1500 FT towards BRIGADA. Report when cleared of the final approach. Request clearance to join right downwind of RWY 35 or proceed as instructed by ATC.
- c. From the Northwest via KLINAN GYM: Report approaching DOLEFIL by keeping to the East side of Marbel - Makar Road. Continue towards PGH and proceed East to cross the final approach of RWY 17 flying not above 2000 FT towards KLINAN GYM. Report when cleared of the final approach. Turn right towards BRIGADA by keeping to the East side of Klinan 6 - Cannery Road. Request clearance to join right downwind of RWY 35 or proceed as instructed by ATC.
- d. From the Southeast: Report approaching MSV PORT. Request clearance to join final of RWY 35 or proceed as instructed by ATC.
- e. From the Southwest: Report approaching MAASIM by following the South Cotabato - Sarangani Road. Continue towards the COAL PLANT. Request clearance to cross final approach of RWY 35 flying not above 1500 FT towards MSV PORT. Report when cleared of the final approach. Request clearance to join final or right base of RWY 35 or proceed as instructed by ATC.

3. VFR Procedures for Overflights

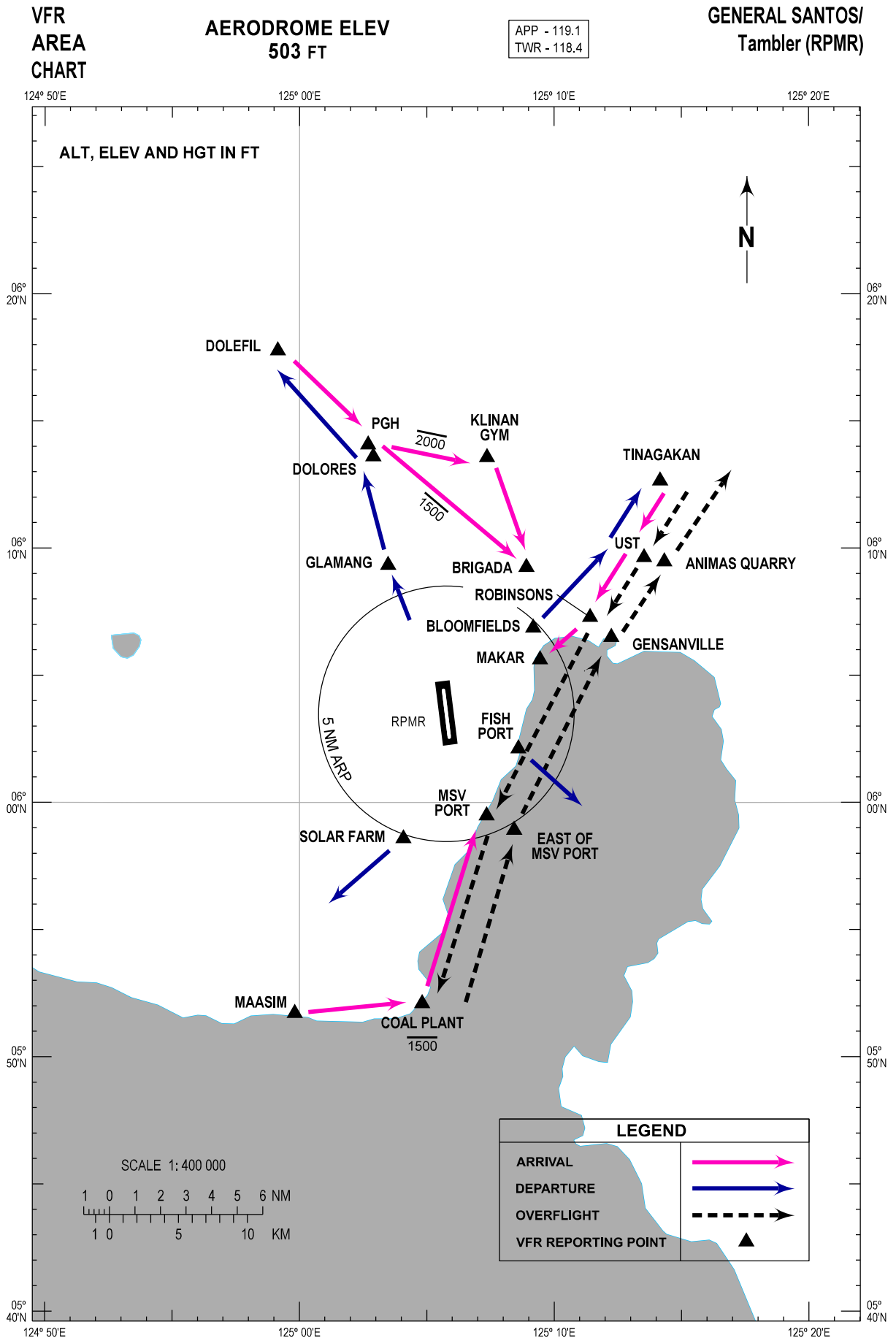
- 3.1 From the Northeast to the South: Report approaching East of TINAGAKAN. Continue towards UST by keeping to the East side of Digos - Makar Road. Continue towards MSV Port via ROBINSONS by following the shoreline. Request clearance to cross final approach of RWY 35 flying not above 1500 FT towards the COAL PLANT. Report when cleared of the final approach or proceed as instructed by ATC.
- 3.2 From the South to the Northeast: Report approaching the East of COAL PLANT. Request clearance to cross final approach RWY 35 flying not above 1500 FT towards GENSANVILLE via EAST OF MSV PORT, flying over water. Report when cleared of the final approach. Continue towards East of TINAGAKAN via ANIMAS QUARRY by following the Buayan - Malbulan River or proceed as instructed by ATC.

4. List of Visual Landmarks and Reporting Points

- 4.1 The following visual reference and reporting points as mentioned in the procedure are identified using local available maps, Google Maps and Google Earth Satellite images.

VISUAL REPORTING POINT	COORDINATES	DISTANCE FROM ARP (NM)	RELATIVE POSITION FROM ARP	DESCRIPTION
ANIMAS QUARRY	060928N 1251420E	10.4	NE	Animas Quarry, Barangay Ligaya
BLOOMFIELDS	060652N 1250911E	4.8	NE	Bloomfields Subdivision
BRIGADA	060915N 1250855E	6.5	NE	Brigada Complex
COAL PLANT	055206N 1250449E	11.4	S	Coal Power Plant
DOLEFIL	061746N 1245909E	15.7	NW	Dole Philippines Station 4
DOLORES	061336N 1250254E	10.5	NW	Dolores Resort, Polomolok
EAST OF MSV PORT	055855N 1250826E	5.3	SE	Checkpoint for Overflights (South to Northeast)
FISH PORT	060207N 1250836E	3.1	SE	GenSan Fish Port Complex
GENSANVILLE	060630N 1251215E	7.1	NE	Gensanville Subdivision
GLAMANG	060920N 1250329E	6.2	NW	Cluster of Buildings/ Warehouses
KLINAN GYM	061334N 1250722E	10.2	NE	Upper Klinan Gym
MAASIM	055143N 1245949E	13.1	SW	Maasim Town Plaza
MAKAR	060537N 1250927E	4.2	NE	Makar Wharf/Port, Calumpang
MSV PORT	055929N 1250721E	4.3	SE	MSV Corporation Port
PGH	061404N 1250242E	11.0	NW	Polomolok General Hospital, Pagalungan
ROBINSONS	060717N 1251125E	6.8	NE	Robinsons Mall of GenSan

VISUAL REPORTING POINT	COORDINATES	DISTANCE FROM ARP (NM)	RELATIVE POSITION FROM ARP	DESCRIPTION
SOLAR FARM	055835N 1250405E	5.2	SW	Bawing Solar Power Farm
TINAGAKAN	061239N 1251410E	12.4	NE	Tinagakan Elementary School
UST	060938N 1251332E	9.9	NE	University of Sto. Tomas - General Santos Campus



RPMR AD 2.24 CHARTS RELATED TO AN AERODROME

TITLE	PAGE
Area Chart	RPMR AD CHART 2 - 1
Standard Departure Chart - Instrument - ICAO	RPMR AD CHART 2 - 3
Standard Departure Chart - Instrument - ICAO (RNP SID RWY 17)	RPMR AD CHART 2 - 5
Standard Departure Chart - Instrument - ICAO (RNP SID RWY 35)	RPMR AD CHART 2 - 9
Standard Arrival Chart - Instrument - ICAO	RPMR AD CHART 2 - 13
Standard Arrival Chart - Instrument - ICAO (RNP STAR RWY 17)	RPMR AD CHART 2 - 15
Standard Arrival Chart - Instrument - ICAO (RNP STAR RWY 35)	RPMR AD CHART 2 - 19
Instrument Approach Chart - ICAO (RNP RWY 17)	RPMR AD CHART 2 - 23
Instrument Approach Chart - ICAO (RNP RWY 35)	RPMR AD CHART 2 - 27
Traffic Circuit Chart (RWY 17)	RPMR AD CHART 2 - 29
Traffic Circuit Chart (RWY 35)	RPMR AD CHART 2 - 30