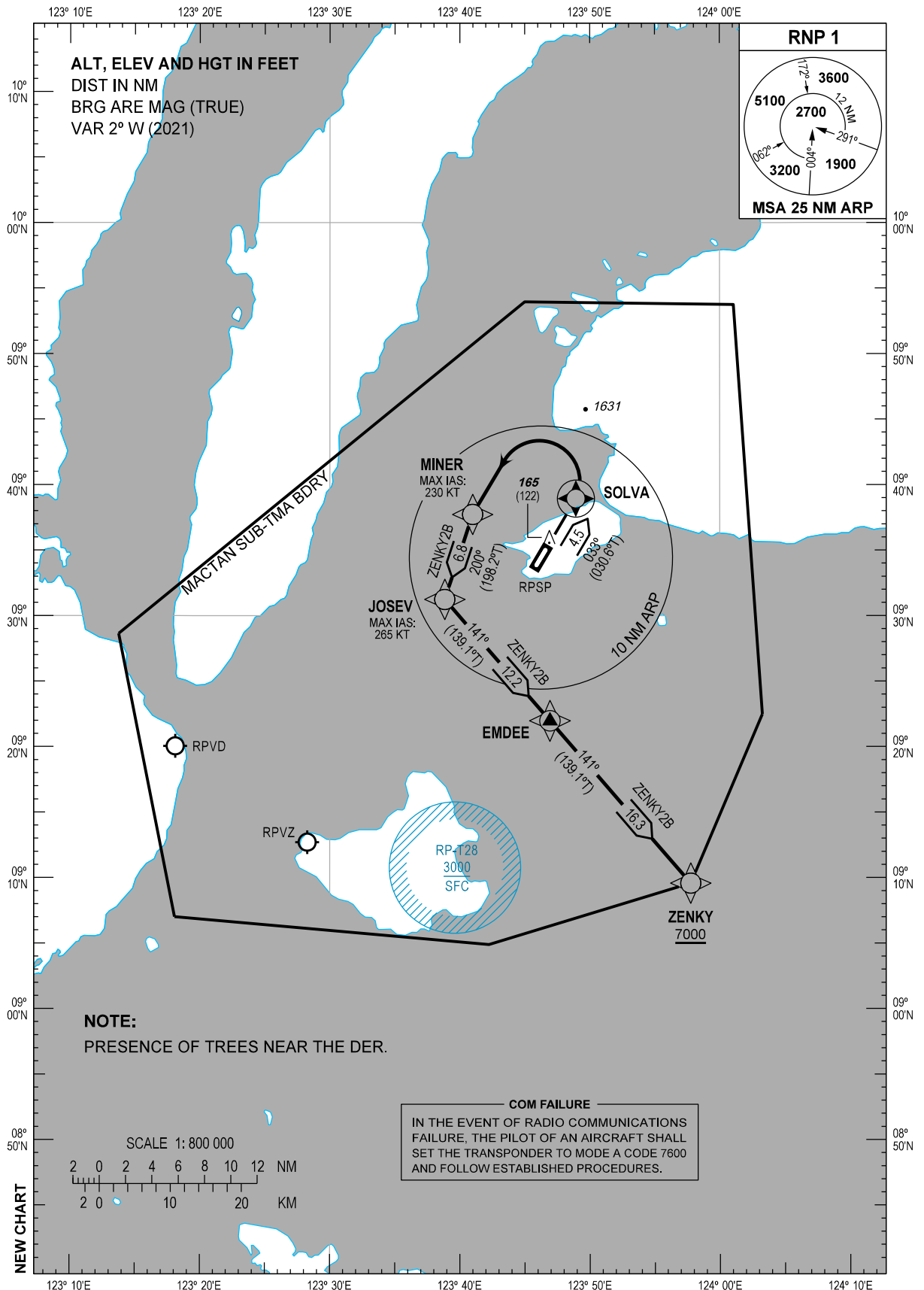


STANDARD DEPARTURE
CHART - INSTRUMENT
(SID) - ICAO

TRANSITION
ALTITUDE
11000 FT

TWR - 124.5 / 128.8	ACC - 124.9 / 125.7 (SOUTH)
CLNC DEL - 125.1	- 132.5 / 125.7 (SOUTHEAST)
APP - 124.7 / 121.2	- 8942 / 5655 (SEA-2 HF)
(MACTAN)	- 8903 (CWP HF)

BOHOL/Bohol-
Panglao Intl (RPSP)
RNP SID RWY 03
ZENKY2B



DEPARTURE ROUTE DESCRIPTION

SID	TAKE-OFF	PROCEDURE	REMARKS
ZENKY2B	RWY 03	Climb on course 033°M. At SOLVA, turn left direct to MINER, to JOSEV, to EMDEE, to ZENKY.	Do not exceed 230 KT until MINER then 265 KT to JOSEV.

WAYPOINT LIST

Waypoint Name	Latitude	Longitude	Type
EMDEE	092158.4N	1234656.0E	Fly-by
JOSEV	093114.5N	1233850.2E	Fly-by
MINER	093743.9N	1234058.9E	Fly-by
SOLVA	093856.2N	1234855.6E	Flyover
ZENKY	090934.7N	1235744.6E	Fly-by

PROPOSED CODING FOR DEPARTURE RNP SID RWY 03

Table 1: ZENKY2B

Serial Number	Path Descriptor	Waypoint Identifier	Flyover	Course °M (°T)	Magnetic Variation (°)	Distance (NM)	Turn Direction	Altitude (FT)	Speed limit (KT)	VPA/TCH	Navigation Specification	Transition Identifier
10	CF	SOLVA	Y	033 (030.6)	+2	4.5	-	-	-	-	RNP1	RW03
20	DF	MINER	-	-	-	-	L	-	-230	-	RNP1	RW03
30	TF	JOSEV	-	200 (198.2)	+2	6.8	-	-	-265	-	RNP1	RW03
40	TF	EMDEE	-	141 (139.1)	+2	12.2	-	-	-	-	RNP1	RW03
50	TF	ZENKY	-	141 (139.1)	+2	16.3	-	+7000	-	-	RNP1	RW03