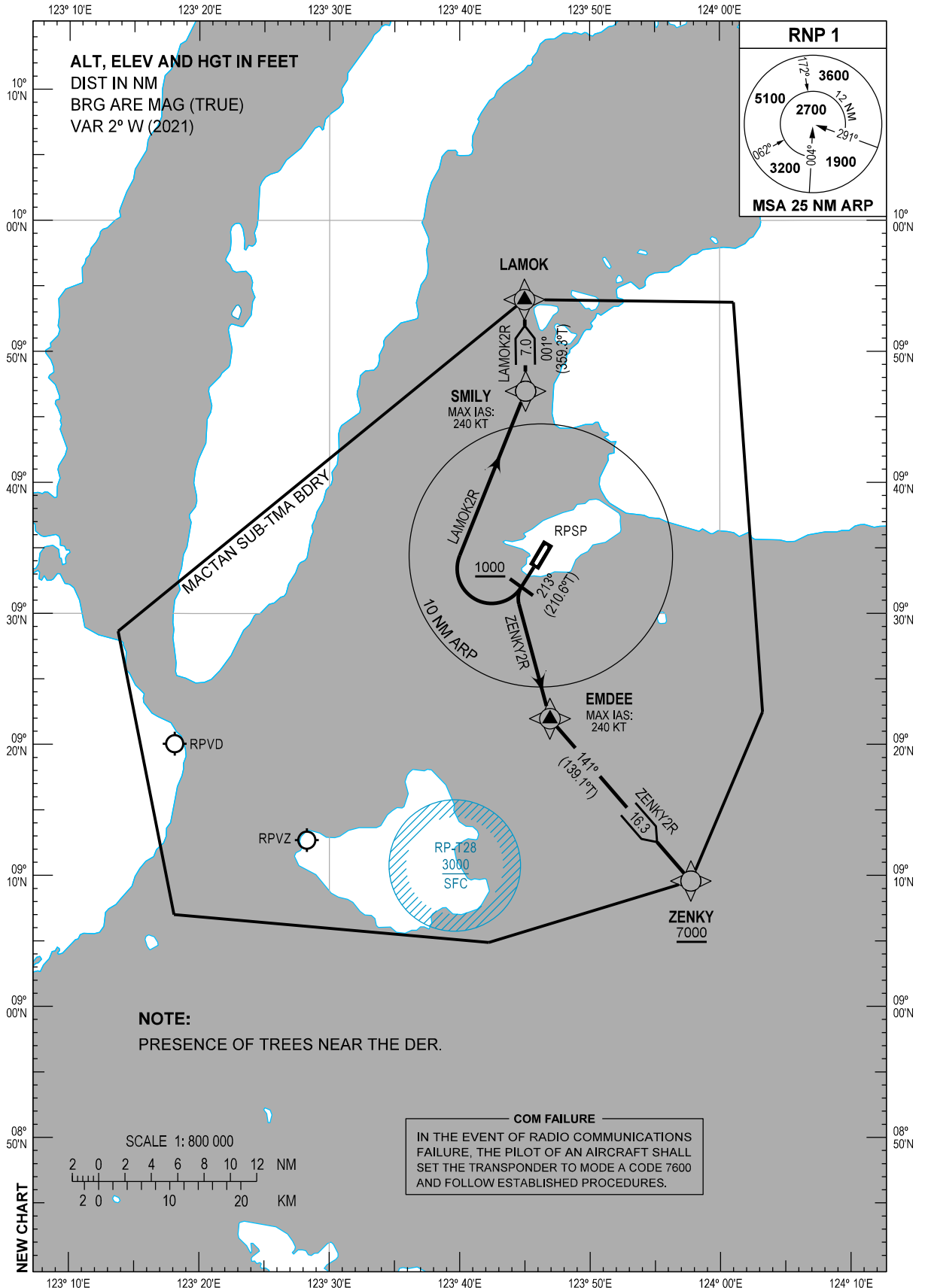


**STANDARD DEPARTURE
CHART - INSTRUMENT
(SID) - ICAO**

TRANSITION
ALTITUDE
11000 FT

TWR - 124.5 / 128.8	ACC - 124.9 / 125.7 (SOUTH)
CLNC DEL - 125.1	- 132.5 / 125.7 (SOUTHEAST)
APP - 124.7 / 121.2 (MACTAN)	- 8942 / 5655 (SEA-2 HF) - 8903 (CWP HF)

**BOHOL/Bohol-
Panglao Intl (RPSP)**
RNP SID RWY 21
LAMOK2R ZENKY2R



DEPARTURE ROUTE DESCRIPTION

SID	TAKE-OFF	PROCEDURE	REMARKS
LAMOK2R	RWY 21	Climb on course 213°M. At 1000 FT, turn right direct to SMILY, to LAMOK.	Do not exceed 240 KT until SMILY.
ZENKY2R		Climb on course 213°M. At 1000 FT, turn left direct to EMDEE, to ZENKY.	1) Do not exceed 240 KT until EMDEE. 2) ATS Gradient 4.0% so as to cross ZENKY at or above 7000 FT.

WAYPOINT LIST

Waypoint Name	Latitude	Longitude	Type
EMDEE	092158.4N	1234656.0E	Fly-by
LAMOK	095357.5N	1234459.1E	Fly-by
SMILY	094658.3N	1234504.4E	Fly-by
ZENKY	090934.7N	1235744.6E	Fly-by

PROPOSED CODING FOR DEPARTURE RNP SID RWY 21

Table 1: LAMOK2R

Serial Number	Path Descriptor	Waypoint Identifier	Flyover	Course °M (°T)	Magnetic Variation (°)	Distance (NM)	Turn Direction	Altitude (FT)	Speed limit (KT)	VPA/TCH	Navigation Specification	Transition Identifier
10	CA	-	-	213 (210.6)	+2	-	-	+1000	-	-	RNP1	RW21
20	DF	SMILY	-	-	-	-	R	-	-240	-	RNP1	RW21
30	TF	LAMOK	-	001 (359.3)	+2	7.0	-	-	-	-	RNP1	RW21

Table 2: ZENKY2R

Serial Number	Path Descriptor	Waypoint Identifier	Flyover	Course °M (°T)	Magnetic Variation (°)	Distance (NM)	Turn Direction	Altitude (FT)	Speed limit (KT)	VPA/TCH	Navigation Specification	Transition Identifier
10	CA	-	-	213 (210.6)	+2	-	-	+1000	-	-	RNP1	RW21
20	DF	EMDEE	-	-	-	-	L	-	-240	-	RNP1	RW21
30	TF	ZENKY	-	141 (139.1)	+2	16.3	-	+7000	-	-	RNP1	RW21