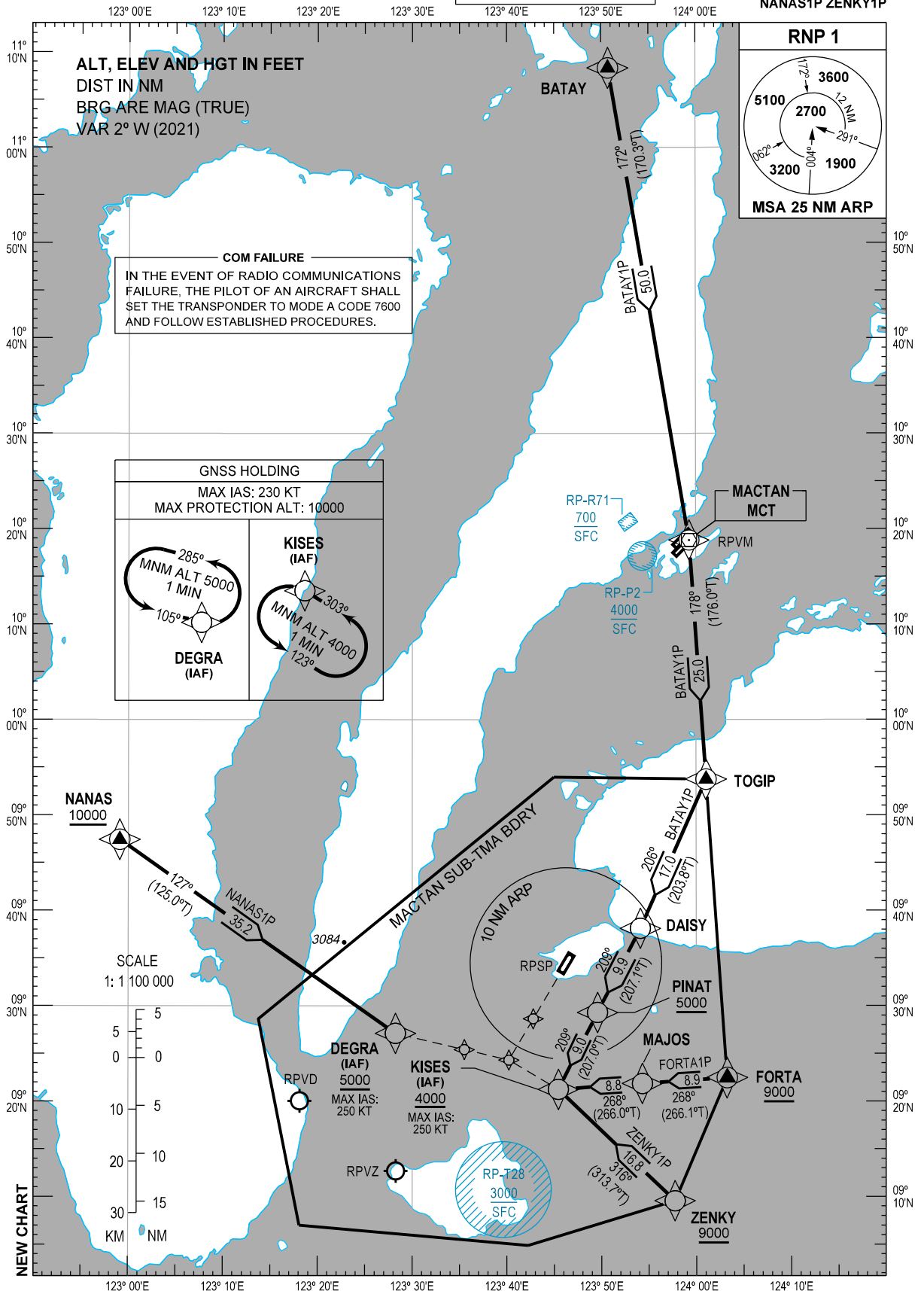


STANDARD ARRIVAL
CHART - INSTRUMENT
(STAR) - ICAO

TRANSITION
ALTITUDE
11000 FT

ACC - 124.9 / 125.7 (SOUTH)
- 132.5 / 125.7 (SOUTHEAST)
- 8942 / 5655 (SEA-2 HF)
- 8903 (CWP HF)
APP - 124.7 / 121.2 (MACTAN)
TWR - 124.5 / 128.8

BOHOL/Bohol-
Panglao Intl (RPSP)
RNP STAR RWY 03
BATAY1P FORTA1P
NANAS1P ZENKY1P



ARRIVAL ROUTE DESCRIPTION

STAR	ROUTE	PROCEDURE	REMARKS
BATAY1P	BATAY - MCT - TOGIP - DAISY - PINAT - KISES	From BATAY to MCT DVOR/DME, to TOGIP, to DAISY, to PINAT at or above 5000 FT, to KISES at or above 4000 FT.	
FORTA1P	FORTA - MAJOS - KISES	From FORTA at or above 9000 FT, to MAJOS, to KISES at or above 4000 FT.	
NANAS1P	NANAS - DEGRA	From NANAS at or above 10000 FT, to DEGRA at or above 5000 FT.	
ZENKY1P	ZENKY - KISES	From ZENKY at or above 9000 FT, to KISES at or above 4000 FT.	

WAYPOINT LIST

Waypoint Name	Latitude	Longitude	Type
BATAY	110819.3N	1235043.1E	Fly-by
DAISY	093807.7N	1235406.5E	Fly-by
DEGRA	092707.7N	1232814.2E	Fly-by
FORTA	092228.9N	1240315.3E	Fly-by
KISES	092115.3N	1234526.1E	Fly-by
MAJOS	092152.1N	1235418.2E	Fly-by
MCT	101848.8N	1235917.9E	Fly-by
NANAS	094725.8N	1225906.3E	Fly-by
PINAT	092918.6N	1234934.4E	Fly-by
TOGIP	095345.2N	1240103.5E	Fly-by
ZENKY	090934.7N	1235744.6E	Fly-by

PROPOSED CODING FOR ARRIVAL RNP STAR RWY 03

Table 1: BATAY1P

Serial Number	Path Descriptor	Waypoint Identifier	Flyover	Course °M (°T)	Magnetic Variation (°)	Distance (NM)	Turn Direction	Altitude (FT)	Speed limit (KT)	VPA/TCH	Navigation Specification	Transition Identifier
10	IF	BATAY	-	-	-	-	-	-	-	-	RNP1	RW03
20	TF	MCT	-	172 (170.3)	+2	50.0	-	-	-	-	RNP1	RW03
30	TF	TOGIP	-	178 (176.0)	+2	25.0	-	-	-	-	RNP1	RW03
40	TF	DAISY	-	206 (203.8)	+2	17.0	-	-	-	-	RNP1	RW03
50	TF	PINAT	-	209 (207.1)	+2	9.9	-	+5000	-	-	RNP1	RW03
60	TF	KISES	-	209 (207.0)	+2	9.0	-	+4000	-250	-	RNP1	RW03

NEW TABLE (ARR RTE DESCRIPTION, WPT LIST AND PROPOSED CODING)

Table 2: FORTA1P

Serial Number	Path Descriptor	Waypoint Identifier	Flyover	Course °M (°T)	Magnetic Variation (°)	Distance (NM)	Turn Direction	Altitude (FT)	Speed limit (KT)	VPA/TCH	Navigation Specification	Transition Identifier
10	IF	FORTA	-	-	-	-	-	+9000	-	-	RNP1	RW03
20	TF	MAJOS	-	268 (266.1)	+2	8.9	-	-	-	-	RNP1	RW03
30	TF	KISES	-	268 (266.0)	+2	8.8	-	+4000	-250	-	RNP1	RW03

Table 3: NANAS1P

Serial Number	Path Descriptor	Waypoint Identifier	Flyover	Course °M (°T)	Magnetic Variation (°)	Distance (NM)	Turn Direction	Altitude (FT)	Speed limit (KT)	VPA/TCH	Navigation Specification	Transition Identifier
10	IF	NANAS	-	-	-	-	-	+10000	-	-	RNP1	RW03
20	TF	DEGRA	-	127 (125.0)	+2	35.2	-	+5000	-250	-	RNP1	RW03

Table 4: ZENKY1P

Serial Number	Path Descriptor	Waypoint Identifier	Flyover	Course °M (°T)	Magnetic Variation (°)	Distance (NM)	Turn Direction	Altitude (FT)	Speed limit (KT)	VPA/TCH	Navigation Specification	Transition Identifier
10	IF	ZENKY	-	-	-	-	-	+9000	-	-	RNP1	RW03
20	TF	KISES	-	316 (313.7)	+2	16.8	-	+4000	-250	-	RNP1	RW03