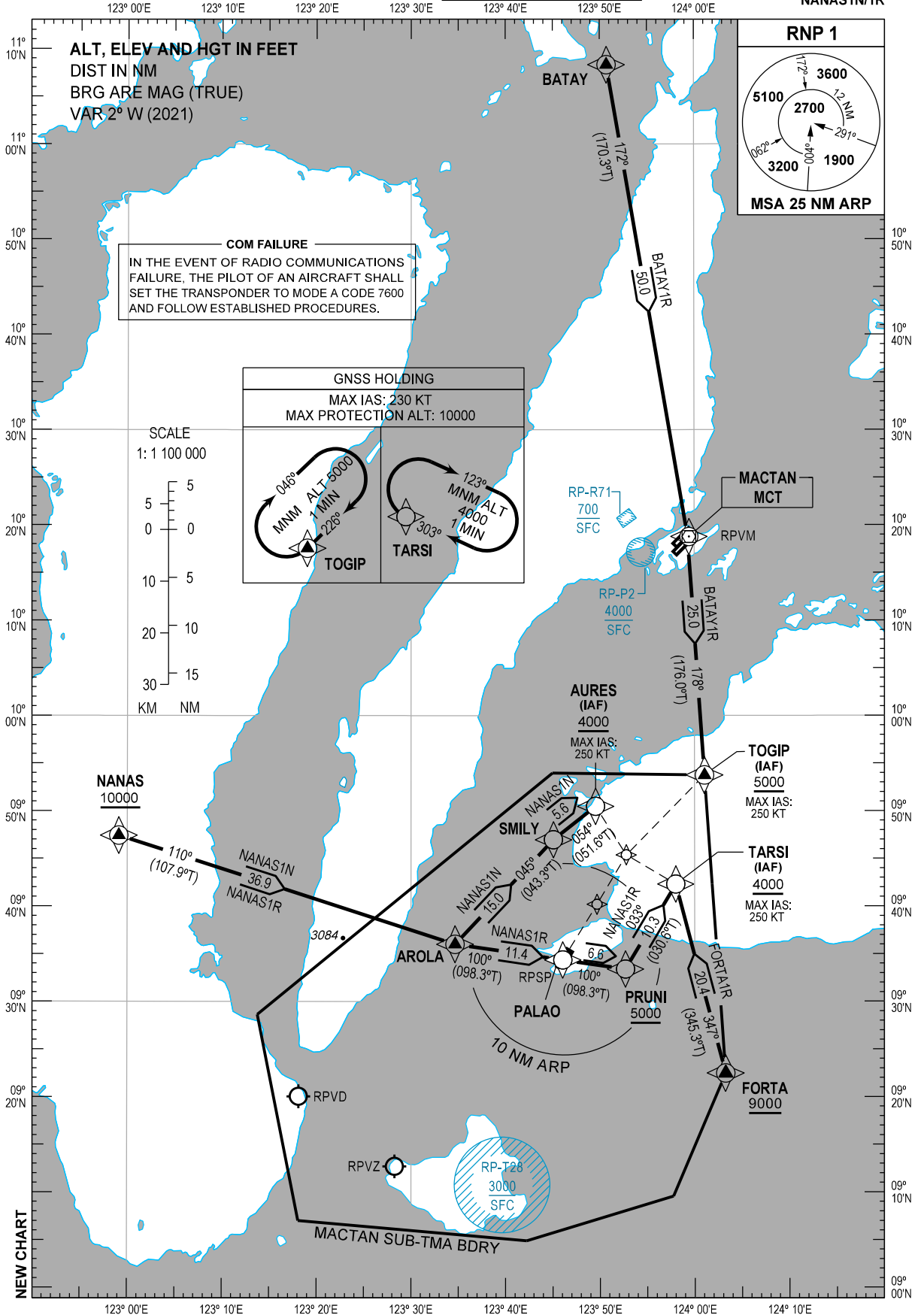


STANDARD ARRIVAL
CHART - INSTRUMENT
(STAR) - ICAO

TRANSITION
ALTITUDE
11000 FT

ACC - 124.9 / 125.7 (SOUTH)
- 132.5 / 125.7 (SOUTHEAST)
- 8942 / 5655 (SEA-2 HF)
- 8903 (CWP HF)
APP - 124.7 / 121.2 (MACTAN)
TWR - 124.5 / 128.8

BOHOL/Bohol-
Panglao Intl (RPSP)
RNP STAR RWY 21
BATAY1R FORTA1R
NANAS1N/1R



ARRIVAL ROUTE DESCRIPTION

STAR	ROUTE	PROCEDURE	REMARKS
BATAY1R	BATAY - MCT - TOGIP	From BATAY, to MCT DVOR/DME, to TOGIP at or above 5000 FT.	
FORTA1R	FORTA - TARSI	From FORTA at or above 9000 FT, to TARSI at or above 4000 FT.	
NANAS1N	NANAS - AROLA - SMILY - AURES	From NANAS at or above 10000 FT, to AROLA, to SMILY, to AURES at or above 4000 FT.	
NANAS1R	NANAS - AROLA - PALAO - PRUNI - TARSI	From NANAS at or above 10000 FT, to AROLA, to PALAO, to PRUNI at or above 5000 FT, to TARSI at or above 4000 FT.	

WAYPOINT LIST

Waypoint Name	Latitude	Longitude	Type
AROLA	093600.5N	1233440.2E	Fly-by
AURES	095028.9N	1234932.0E	Fly-by
BATAY	110819.3N	1235043.1E	Fly-by
FORTA	092228.9N	1240315.3E	Fly-by
MCT	101848.8N	1235917.9E	Fly-by
NANAS	094725.8N	1225906.3E	Fly-by
PALAO	093421.7N	1234603.4E	Fly-by
PRUNI	093324.0N	1235241.1E	Fly-by
SMILY	094658.3N	1234504.4E	Fly-by
TARSI	094218.9N	1235800.4E	Fly-by
TOGIP	095345.2N	1240103.5E	Fly-by

PROPOSED CODING FOR ARRIVAL RNP STAR RWY 21

Table 1: BATAY1R

Serial Number	Path Descriptor	Waypoint Identifier	Flyover	Course °M (°T)	Magnetic Variation (°)	Distance (NM)	Turn Direction	Altitude (FT)	Speed limit (KT)	VPA/TCH	Navigation Specification	Transition Identifier
10	IF	BATAY	-	-	-	-	-	-	-	-	RNP1	RW21
20	TF	MCT	-	172 (170.3)	+2	50.0	-	-	-	-	RNP1	RW21
30	TF	TOGIP	-	178 (176.0)	+2	25.0	-	+5000	-250	-	RNP1	RW21

Table 2: FORTA1R

Serial Number	Path Descriptor	Waypoint Identifier	Flyover	Course °M (°T)	Magnetic Variation (°)	Distance (NM)	Turn Direction	Altitude (FT)	Speed limit (KT)	VPA/TCH	Navigation Specification	Transition Identifier
10	IF	FORTA	-	-	-	-	-	+9000	-	-	RNP1	RW21
20	TF	TARSI	-	347 (345.3)	+2	20.4	-	+4000	-250	-	RNP1	RW21

NEW TABLE (ARR RTE DESCRIPTION, WPT LIST AND PROPOSED CODING)

Table 3: NANAS1N

Serial Number	Path Descriptor	Waypoint Identifier	Flyover	Course °M (°T)	Magnetic Variation (°)	Distance (NM)	Turn Direction	Altitude (FT)	Speed limit (KT)	VPA/TCH	Navigation Specification	Transition Identifier
10	IF	NANAS	-	-	-	-	-	+10000	-	-	RNP1	RW21
20	TF	AROLA	-	110 (107.9)	+2	36.9	-	-	-	-	RNP1	RW21
30	TF	SMILY	-	045 (043.3)	+2	15.0	-	-	-	-	RNP1	RW21
40	TF	AURES	-	054 (051.6)	+2	5.6	-	+4000	-250	-	RNP1	RW21

Table 4: NANAS1R

Serial Number	Path Descriptor	Waypoint Identifier	Flyover	Course °M (°T)	Magnetic Variation (°)	Distance (NM)	Turn Direction	Altitude (FT)	Speed limit (KT)	VPA/TCH	Navigation Specification	Transition Identifier
10	IF	NANAS	-	-	-	-	-	+10000	-	-	RNP1	RW21
20	TF	AROLA	-	110 (107.9)	+2	36.9	-	-	-	-	RNP1	RW21
30	TF	PALAO	-	100 (098.3)	+2	11.4	-	-	-	-	RNP1	RW21
40	TF	PRUNI	-	100 (098.3)	+2	6.6	-	+5000	-	-	RNP1	RW21
50	TF	TARSI	-	033 (030.6)	+2	10.3	-	+4000	-250	-	RNP1	RW21