

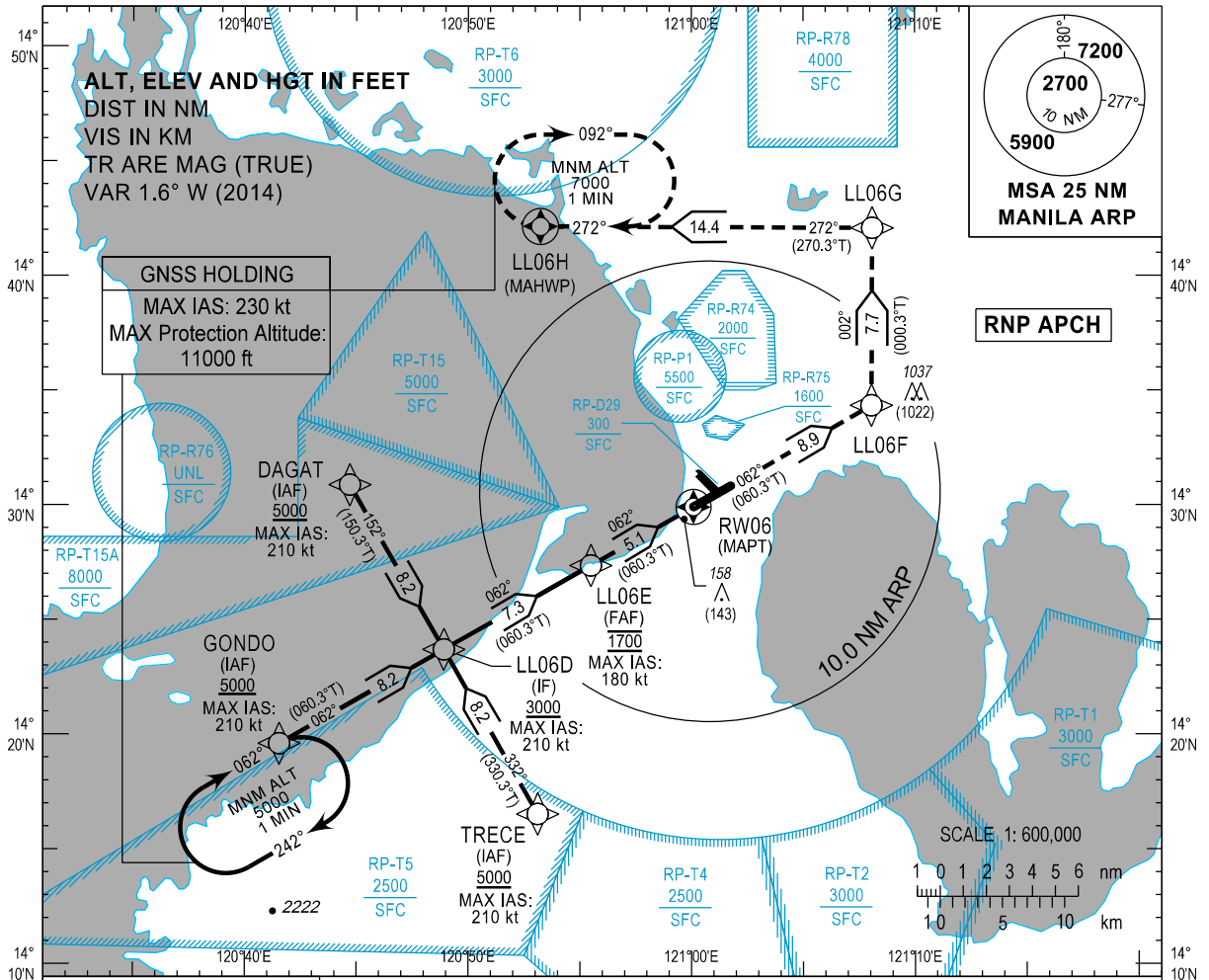
**INSTRUMENT
APPROACH
CHART - ICAO**

AD ELEV **75 ft**
HEIGHTS RELATED TO
THR RWY 06

APP - 121.1 / 124.8
TWR - 118.1 / 118.4
GND - 121.8 / 122.0

MANILA/Ninoy Aquino Intl (RPLL)

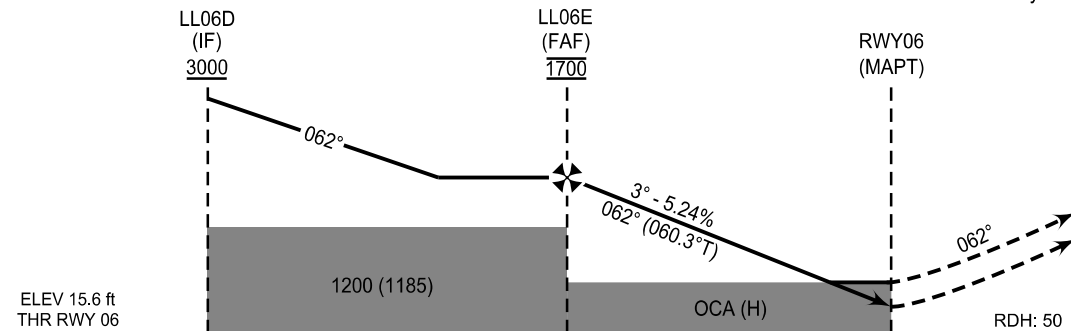
RNP RWY 06



TRANSITION ALT : 11000 ft
TRANSITION LEVEL : FL130

MISSED APPROACH

Climb on course **062°M** to **LL06F**,
to **LL06G**, to **LL06H** and hold at
7000 ft or as instructed by ATC.



ELEV 15.6 ft THR RWY 06	Next WPT (NM)	THR (NM)	12.4	7.3	5.1	5.1	0
----------------------------	---------------	----------	------	-----	-----	-----	---

OCA/H	A	B	C	D
LNAV/VNAV	410 (395)			
LNAV	460 (445)			

NEW PROC

NM TO THR	5.1	5.0	4.0	3.0	2.0	1.2
ALT	1700	1660	1340	1020	700	460
HGT	(1685)	(1645)	(1325)	(1005)	(685)	(445)

WAYPOINT LIST

Waypoint Name	Latitude	Longitude	Type
DAGAT	N14 30 53	E120 44 42	Fly-by
GONDO	N14 19 36	E120 41 33	Fly-by
LL06D	N14 23 42	E120 48 55	Fly-by
LL06E	N14 27 22	E120 55 30	Fly-by
LL06F	N14 34 21	E121 08 03	Fly-by
LL06G	N14 42 05	E121 08 06	Fly-by
LL06H	N14 42 08	E120 53 14	Flyover
RW06	N14 29 55	E121 00 05	Flyover
TRECE	N14 16 31	E120 53 07	Fly-by

PROPOSED CODING FOR INSTRUMENT APPROACH RNP RWY06

SEQ. NO.	PD	W/P ID	Flyover	Course Track °M (°T)	Magnetic Variation	Distance (NM)	TD	ALT (FT)	Speed (knots)	VPA (°)	Nav. Spec	Transition ID
10	IF	DAGAT	N	-	-	-	-	+5000	210	-	RNP APCH	DAGAT
20	TF	LL06D	N	152° (150.3°)	-	8.2	-	+3000	210	-	RNP APCH	DAGAT
10	IF	GONDO	N	-	-	-	-	+5000	210	-	RNP APCH	GONDO
20	TF	LL06D	N	062° (060.3°)	-	8.2	-	+3000	210	-	RNP APCH	GONDO
10	IF	TRECE	N	-	-	-	-	+5000	210	-	RNP APCH	TRECE
20	TF	LL06D	N	332° (330.3°)	-	8.2	-	+3000	210	-	RNP APCH	TRECE
10	IF	LL06D	N	-	-	-	-	+3000	210	-	RNP APCH	-
20	TF	LL06E	N	062° (060.3°)	-	7.3	-	@1700	180	-	RNP APCH	-
30	TF	RW06	Y	062° (060.3°)	-	5.1	-	+66	-	-3.0	RNP APCH	-
10	CF	LL06F	N	062° (060.3°)	-	8.9	-	-	-	-	RNP APCH	-
20	TF	LL06G	N	002° (000.3°)	-	7.7	-	-	-	-	RNP APCH	-
30	TF	LL06H	Y	272° (270.3°)	-	14.4	-	+7000	-	-	RNP APCH	-

NEW TABLE (CODED PROC AND WPT LIST)