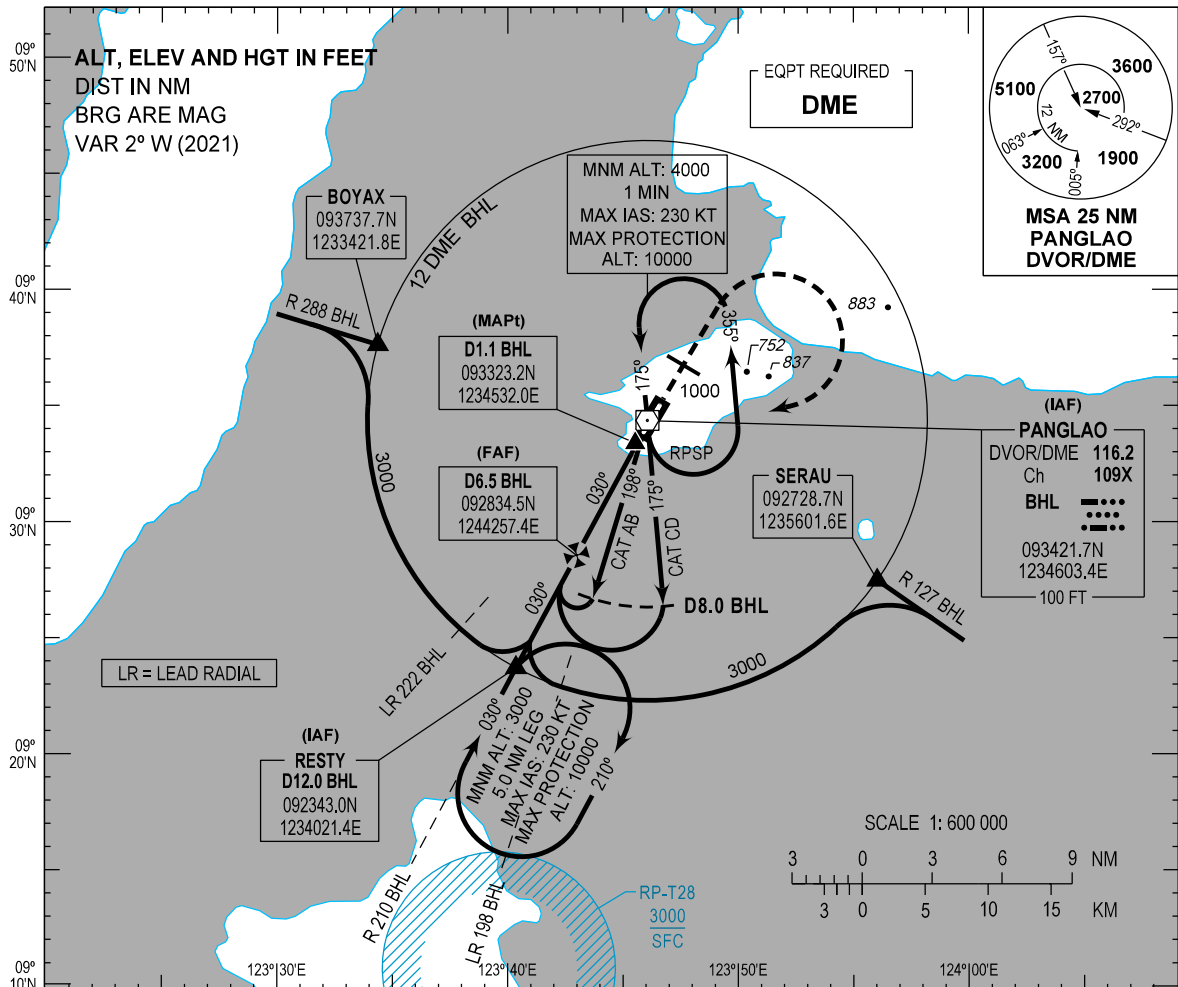


**INSTRUMENT
APPROACH
CHART - ICAO**

AERODROME ELEV 43 FT
HEIGHTS RELATED TO
THR RWY 03 - ELEV 35 FT

APP - 124.7 / 121.2 (MACTAN)
TWR - 124.5 / 128.8
GND - 121.6
ATIS - 126.5

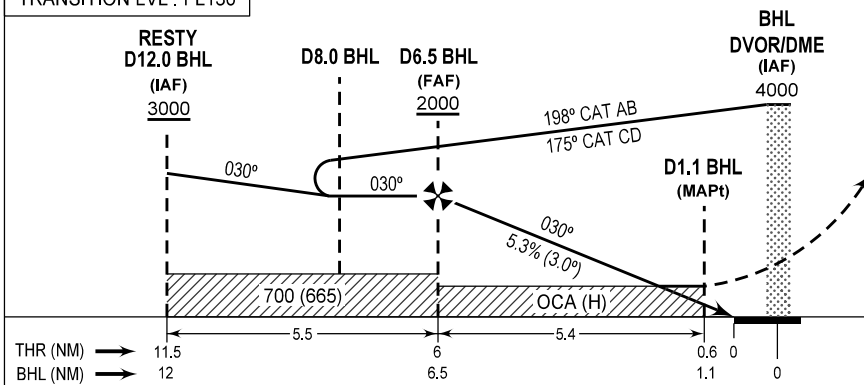
**BOHOL/Bohol-
Panglao Intl (RPSP)**
VOR RWY 03



TRANSITION ALT : 11000
TRANSITION LVL : FL130

MISSED APPROACH

Straight-out climb to 1000 FT, turn right direct to BHL DVOR/DME (IAF) climbing to 4000 FT and hold or as instructed by ATC.



OCA (H)	A	B	C	D			
STRAIGHT-IN	430 (395)						
CIRCLING	630 (587)		1200 (1157)	NOT ALLOWED			
NEW CHART	NM TO BHL	6.5	5	4	3	2	1.6
	ALT (HGT)	2000 (1965)	1520 (1485)	1200 (1165)	880 (845)	560 (525)	430 (395)