

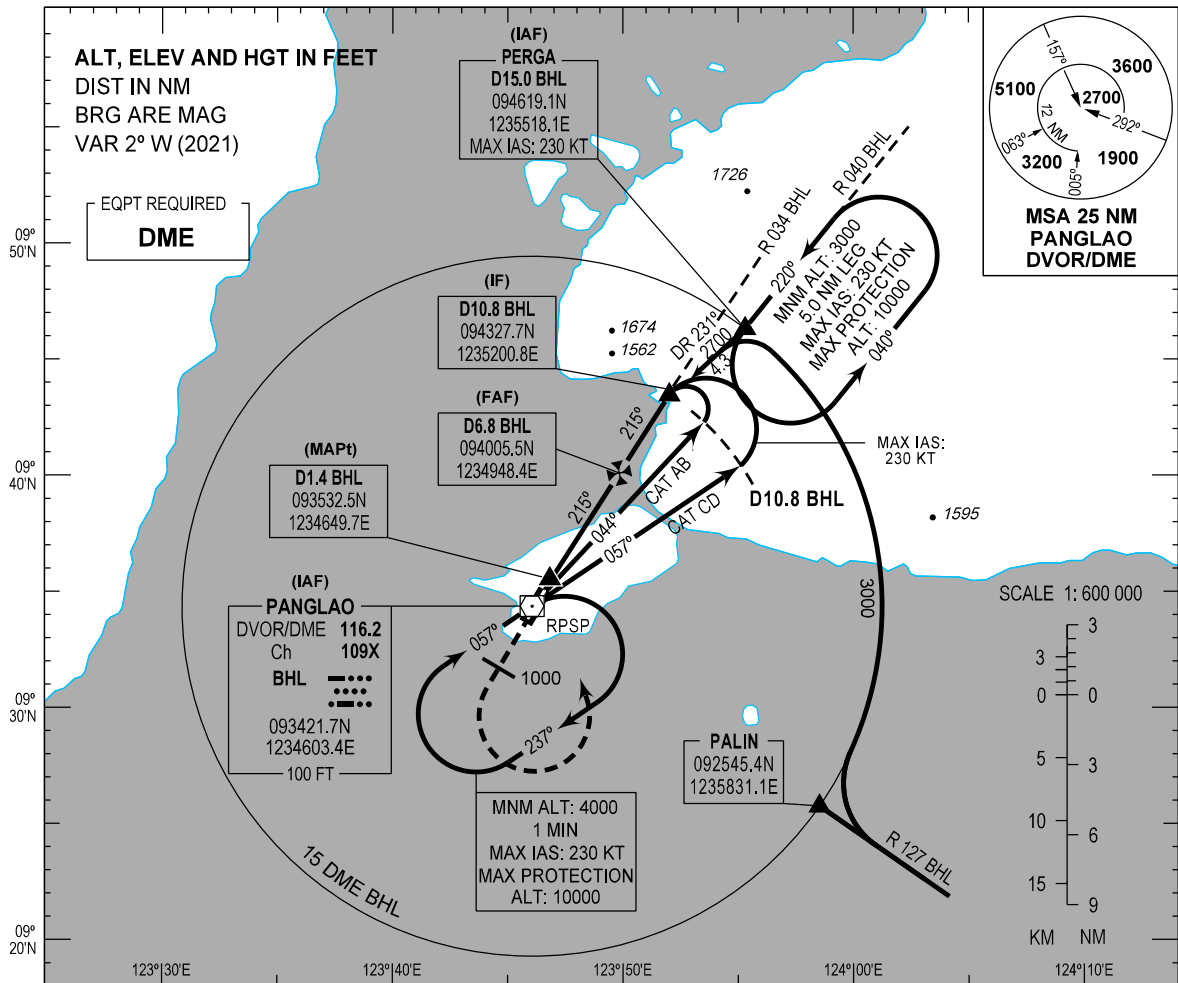
**INSTRUMENT  
APPROACH  
CHART - ICAO**

**AERODROME ELEV 43 FT**

HEIGHTS RELATED TO  
THR RWY 21 - ELEV 43 FT

APP - 124.7 / 121.2 (MACTAN)  
TWR - 124.5 / 128.8  
GND - 121.6  
ATIS - 126.5

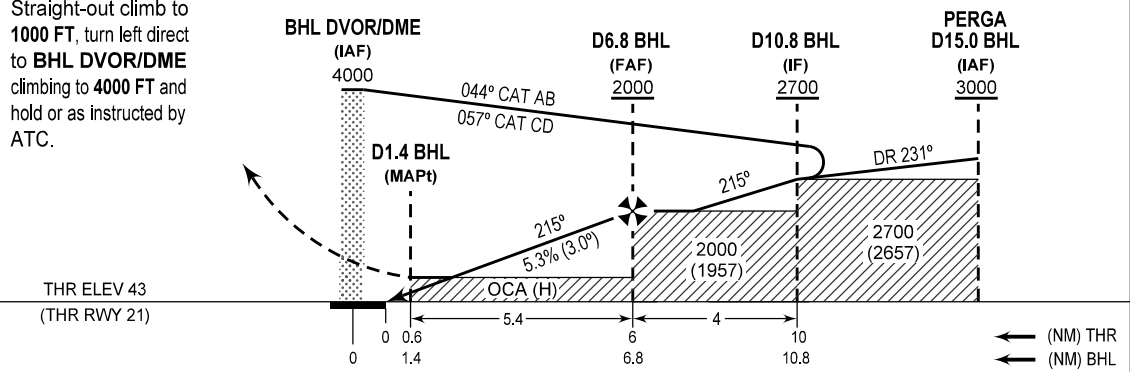
**BOHOL/Bohol-  
Panglao Intl (RPSP)**  
VOR RWY 21



**MISSED APPROACH**

Straight-out climb to 1000 FT, turn left direct to BHL DVOR/DME climbing to 4000 FT and hold or as instructed by ATC.

TRANSITION ALT : 11000  
TRANSITION LVL : FL130



OCA (H)	A	B	C	D
STRAIGHT-IN	500 (457)			
CIRCLING	630 (587)		1200 (1157)	NOT ALLOWED

NEW CHART	NM TO BHL	6.8	5	4	3	2.1
	ALT (HGT)	2000 (1957)	1430 (1387)	1100 (1057)	790 (747)	500 (457)