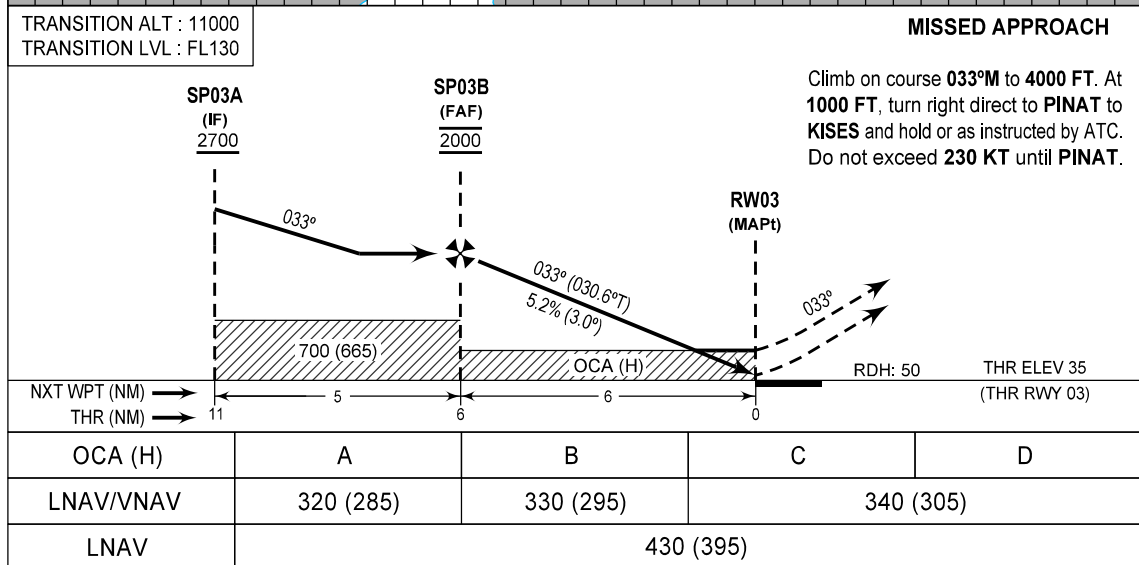
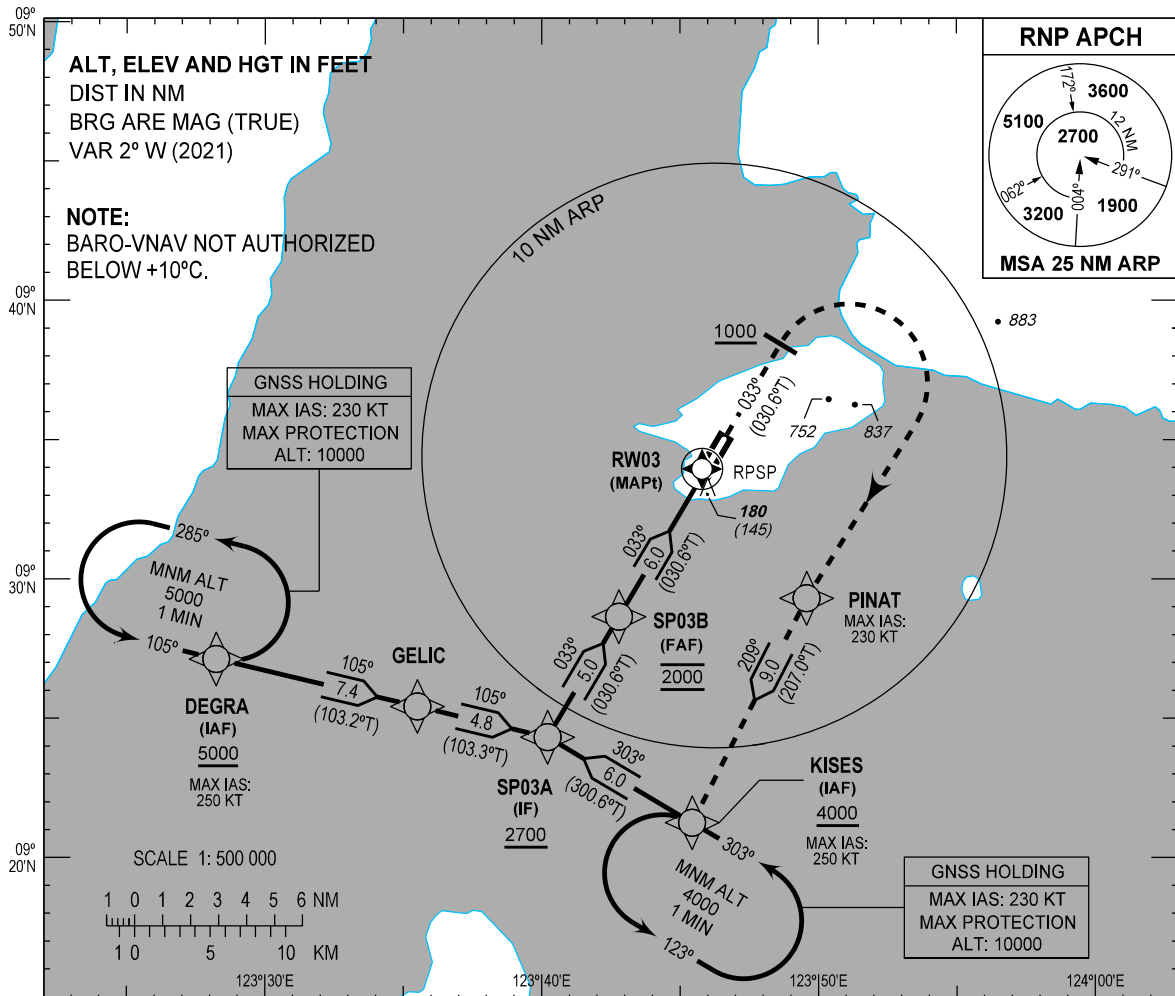


**INSTRUMENT
APPROACH
CHART - ICAO**

AERODROME ELEV 43 FT
HEIGHTS RELATED TO
THR RWY 03 - ELEV 35 FT

APP - 124.7 / 121.2 (MACTAN)
TWR - 124.5 / 128.8
GND - 121.6
ATIS - 126.5

**BOHOL/Bohol-
Panglao Intl (RPSP)
RNP RWY 03**



CIRCLING NOT AUTHORIZED

NEW CHART	NM TO THR	6.02	5	4	3	2	1.1
	ALT (HGT)	2000 (1965)	1680 (1645)	1360 (1325)	1040 (1005)	730 (695)	430 (395)

WAYPOINT LIST

Waypoint Name	Latitude	Longitude	Type
DEGRA	092707.7N	1232814.2E	Fly-by
GELIC	092525.7N	1233530.5E	Fly-by
KISES	092115.3N	1234526.1E	Fly-by
PINAT	092918.6N	1234934.4E	Fly-by
RW03	093351.11N	1234553.52E	Flyover
SP03A	092419.6N	1234012.7E	Fly-by
SP03B	092839.0N	1234247.4E	Fly-by

PROPOSED CODING FOR INSTRUMENT APPROACH RNP RWY 03

Serial Number	Path Descriptor	Waypoint Identifier	Flyover	Course °M (°T)	Magnetic Variation (°)	Distance (NM)	Turn Direction	Altitude (FT)	Speed limit (KT)	VPA/TCH	Navigation Specification	Transition Identifier
10	IF	DEGRA	-	-	-	-	-	+5000	-250	-	RNP APCH	DEGRA
20	TF	GELIC	-	105 (103.2)	+2	7.4	-	-	-	-	RNP APCH	DEGRA
30	TF	SP03A	-	105 (103.3)	+2	4.8	-	+2700	-	-	RNP APCH	DEGRA
10	IF	KISES	-	-	-	-	-	+4000	-250	-	RNP APCH	KISES
20	TF	SP03A	-	303 (300.6)	+2	6.0	-	+2700	-	-	RNP APCH	KISES
10	IF	SP03A	-	-	-	-	-	+2700	-	-	RNP APCH	-
20	TF	SP03B	-	033 (030.6)	+2	5.0	-	@2000	-	-	RNP APCH	-
30	TF	RW03	Y	033 (030.6)	+2	6.0	-	@85	-	-3.0/-	RNP APCH	-
10	CA	-	-	033 (030.6)	+2	-	-	+1000	-	-	RNP APCH	-
20	DF	PINAT	-	-	-	-	R	-	-230	-	RNP APCH	-
30	TF	KISES	-	209 (207.0)	+2	9.0	-	+4000	-250	-	RNP APCH	-