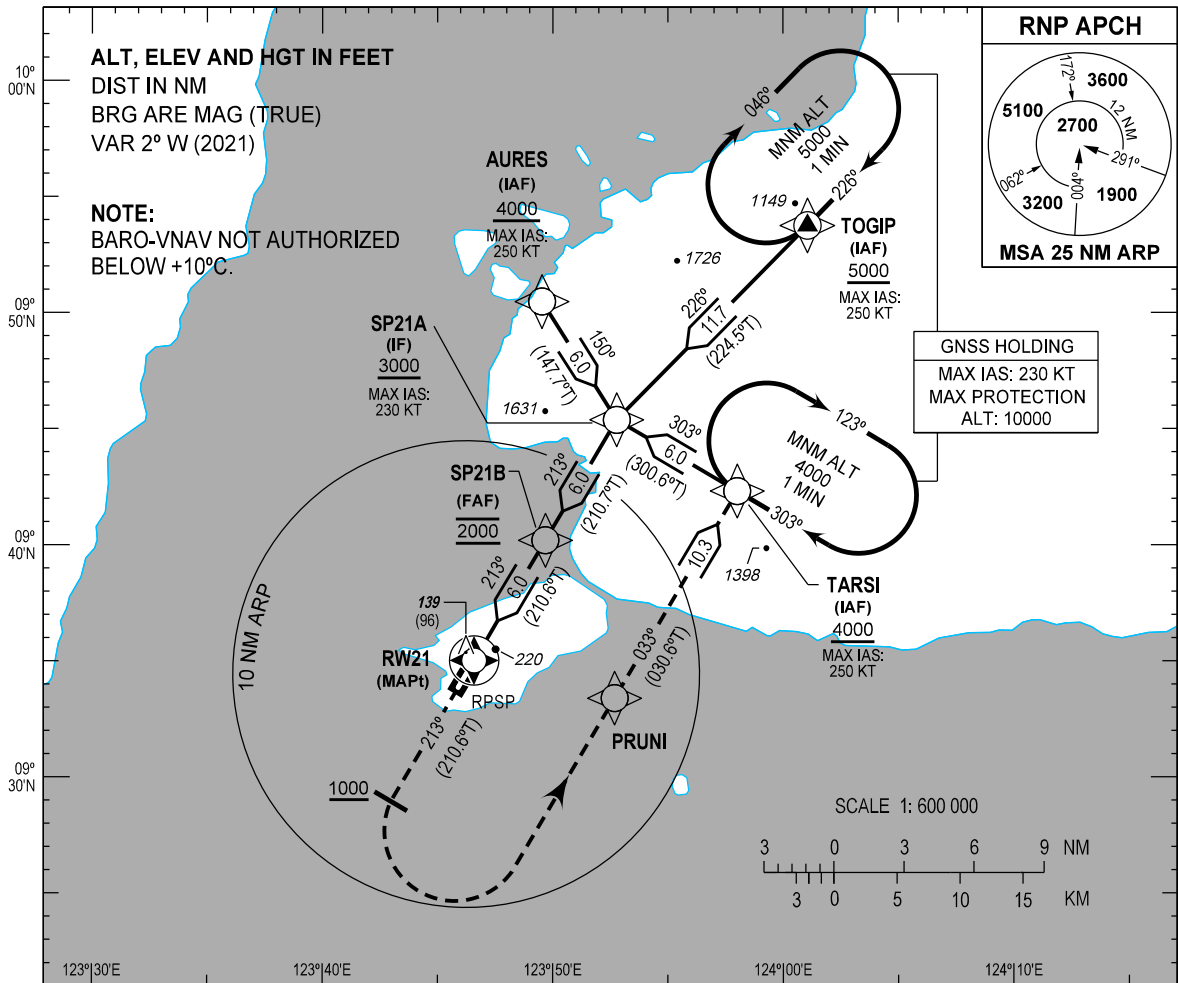


**INSTRUMENT
APPROACH
CHART - ICAO**

AERODROME ELEV 43 FT
HEIGHTS RELATED TO
THR RWY 21 - ELEV 43 FT

APP - 124.7 / 121.2 (MACTAN)
TWR - 124.5 / 128.8
GND - 121.6
ATIS - 126.5

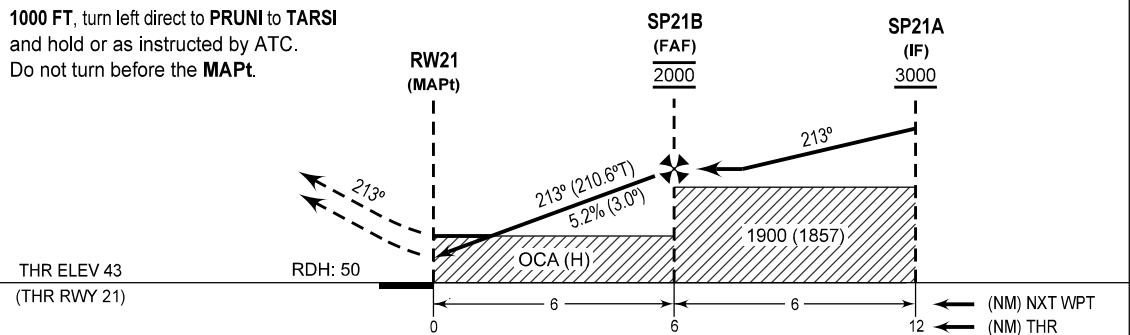
**BOHOL/Bohol-
Panglao Intl (RPSP)**
RNP RWY 21



MISSED APPROACH

Climb on course **213°M** to **4000 FT**. At **1000 FT**, turn left direct to **PRUNI** to **TARSI** and hold or as instructed by ATC. Do not turn before the **MAPt**.

TRANSITION ALT : 11000
TRANSITION LVL : FL130



THR ELEV 43 (THR RWY 21)	RDH: 50	0	6	6	6	12	(NM) NXT WPT (NM) THR
OCA (H)	A	B	C	D			
LNAV/VNAV	350 (307)	360 (317)	370 (327)	380 (337)			
LNAV	470 (427)						

CIRCLING NOT AUTHORIZED

NEW CHART	NM TO THR	6	5	4	3	2	1.2
	ALT (HGT)	2000 (1957)	1690 (1647)	1370 (1327)	1050 (1007)	730 (687)	470 (427)

WAYPOINT LIST

Waypoint Name	Latitude	Longitude	Type
AURES	095028.9N	1234932.0E	Fly-by
PRUNI	093324.0N	1235241.1E	Fly-by
RW21	093501.13N	1234635.30E	Flyover
SP21A	094523.0N	1235246.6E	Fly-by
SP21B	094011.9N	1234940.8E	Fly-by
TARSI	094218.9N	1235800.4E	Fly-by
TOGIP	095345.2N	1240103.5E	Fly-by

PROPOSED CODING FOR INSTRUMENT APPROACH RNP RWY 21

Serial Number	Path Descriptor	Waypoint Identifier	Flyover	Course °M (°T)	Magnetic Variation (°)	Distance (NM)	Turn Direction	Altitude (FT)	Speed limit (KT)	VPA/TCH	Navigation Specification	Transition Identifier
10	IF	TOGIP	-	-	-	-	-	+5000	-250	-	RNP APCH	TOGIP
20	TF	SP21A	-	226 (224.5)	+2	11.7	-	+3000	-230	-	RNP APCH	TOGIP
10	IF	TARSI	-	-	-	-	-	+4000	-250	-	RNP APCH	TARSI
20	TF	SP21A	-	303 (300.6)	+2	6.0	-	+3000	-230	-	RNP APCH	TARSI
10	IF	AURES	-	-	-	-	-	+4000	-250	-	RNP APCH	AURES
20	TF	SP21A	-	150 (147.7)	+2	6.0	-	+3000	-230	-	RNP APCH	AURES
10	IF	SP21A	-	-	-	-	-	+3000	-230	-	RNP APCH	-
20	TF	SP21B	-	213 (210.7)	+2	6.0	-	@2000	-	-	RNP APCH	-
30	TF	RW21	Y	213 (210.6)	+2	6.0	-	@93	-	-3.0/-	RNP APCH	-
10	CA	-	-	213 (210.6)	+2	-	-	+1000	-	-	RNP APCH	-
20	DF	PRUNI	-	-	-	-	L	-	-	-	RNP APCH	-
30	TF	TARSI	-	033 (030.6)	+2	10.3	-	+4000	-250	-	RNP APCH	-