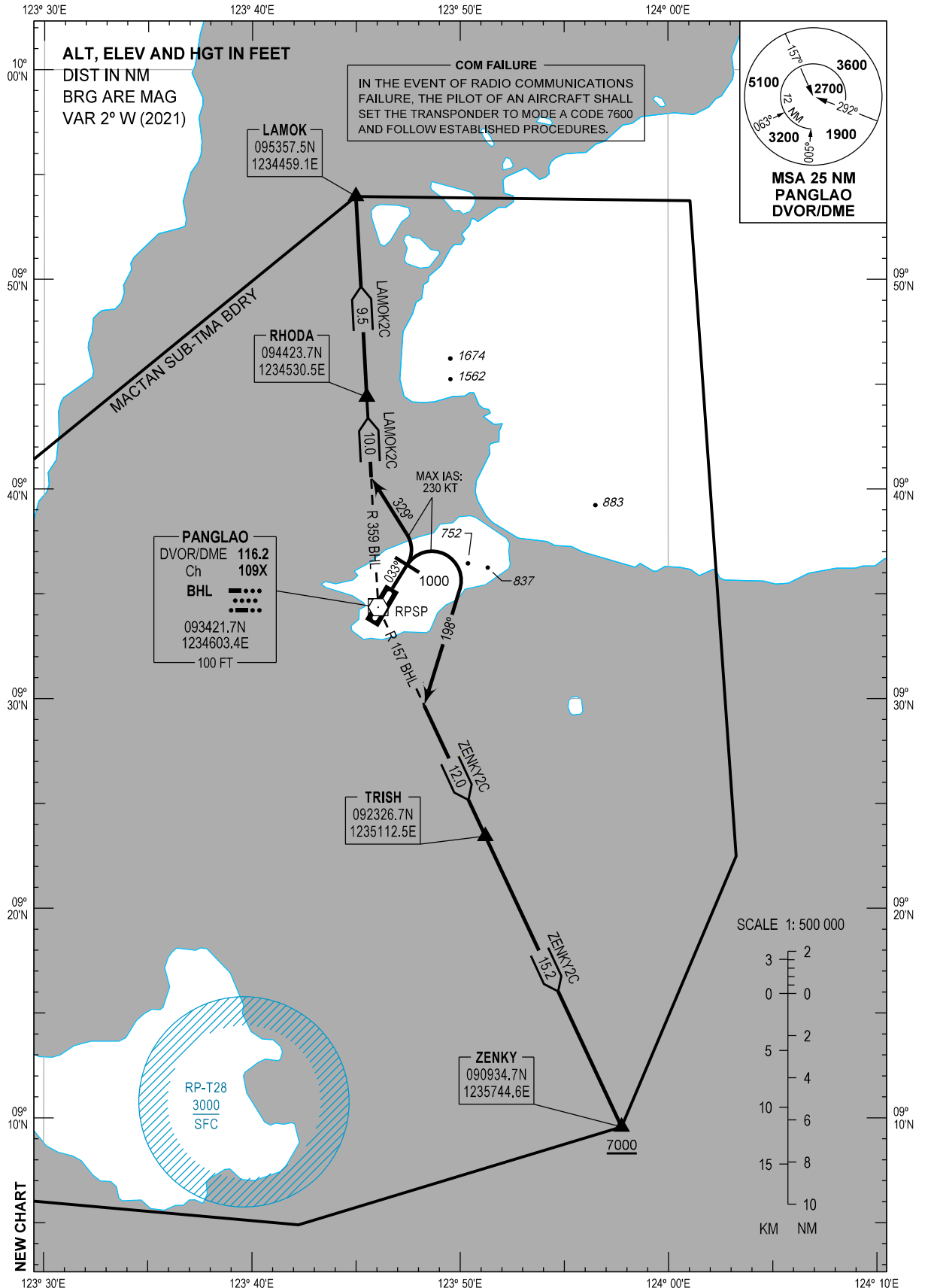


**STANDARD DEPARTURE
CHART - INSTRUMENT
(SID) - ICAO**

TRANSITION
ALTITUDE
11000 FT

TWR - 124.5 / 128.8	ACC - 124.9 / 125.7 (SOUTH)
CLNC DEL - 125.1	- 132.5 / 125.7 (SOUTHEAST)
APP - 124.7 / 121.2	- 8942 / 5655 (SEA-2 HF)
(MACTAN)	- 8903 (CWP HF)

**BOHOL/Bohol-
Panglao Intl (RPSP)**
RWY 03
LAMOK2C ZENKY2C



DEPARTURE ROUTE DESCRIPTION

SID	TAKE-OFF	PROCEDURE	REMARKS
LAMOK2C	Straight-out climb at 1000 FT turn left heading 329°M.	Intercept and track out BHL DVOR/ DME Radial 359 to RHODA. Continue climb to LAMOK.	Max IAS 230 KT during initial turn.
ZENKY2C	Straight-out climb at 1000 FT turn right heading 198°M.	Intercept and track out BHL DVOR/ DME Radial 157 to TRISH. Continue climb to cross ZENKY at or above 7000 FT.	