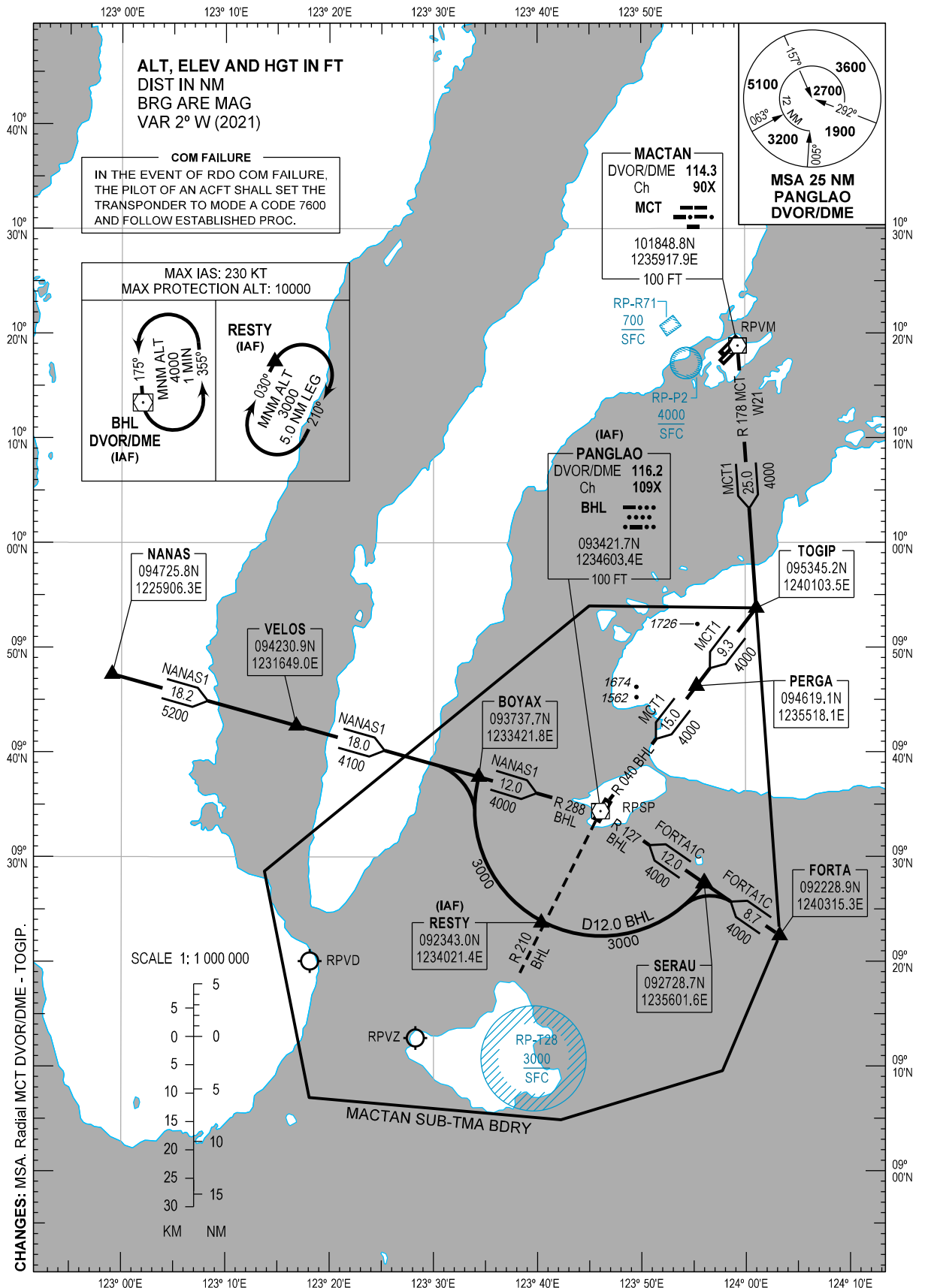


STANDARD ARRIVAL  
CHART - INSTRUMENT  
(STAR) - ICAO

TRANSITION  
ALTITUDE  
11000 FT

ACC - 124.9 / 125.7 (SOUTH)  
- 132.5 / 125.7 (SOUTHEAST)  
- 8942 / 5655 (SEA-2 HF)  
- 8903 (CWP HF)  
APP - 124.7 / 121.2 (MACTAN)  
TWR - 124.5 / 128.8

**BOHOL/Bohol-  
Panglao Intl (RPSP)**  
**RWY 03**  
FORTA1C MCT1 NANAS1



**ARRIVAL ROUTE DESCRIPTION**

<b>STAR</b>	<b>ROUTE</b>	<b>PROCEDURE</b>	<b>REMARKS</b>
<b>FORTA1C</b>	FORTA - SERAU - BHL DVOR/DME	From FORTA on BHL DVOR/DME Radial 127 to SERAU, to BHL DVOR/ DME at or above 4000 FT.	
<b>MCT1</b>	MCT DVOR/DME - TOGIP - PERGA - BHL DVOR/DME	From MCT DVOR/DME to TOGIP on MCT DVOR/DME Radial 178, from TOGIP turn right to PERGA on BHL DVOR/DME Radial 040, to BHL DVOR/DME at or above 4000 FT.	
<b>NANAS1</b>	NANAS - VELOS - BOYAX - BHL DVOR/DME	From NANAS on BHL DVOR/DME Radial 288 to VELOS at or above 5200 FT, to BOYAX at or above 4100 FT, to BHL DVOR/DME at or above 4000 FT.	

**CHANGES:** RTE Description. MCT1 and MCT1A PROC Description.