

STANDARD ARRIVAL
CHART - INSTRUMENT
(STAR) - ICAO

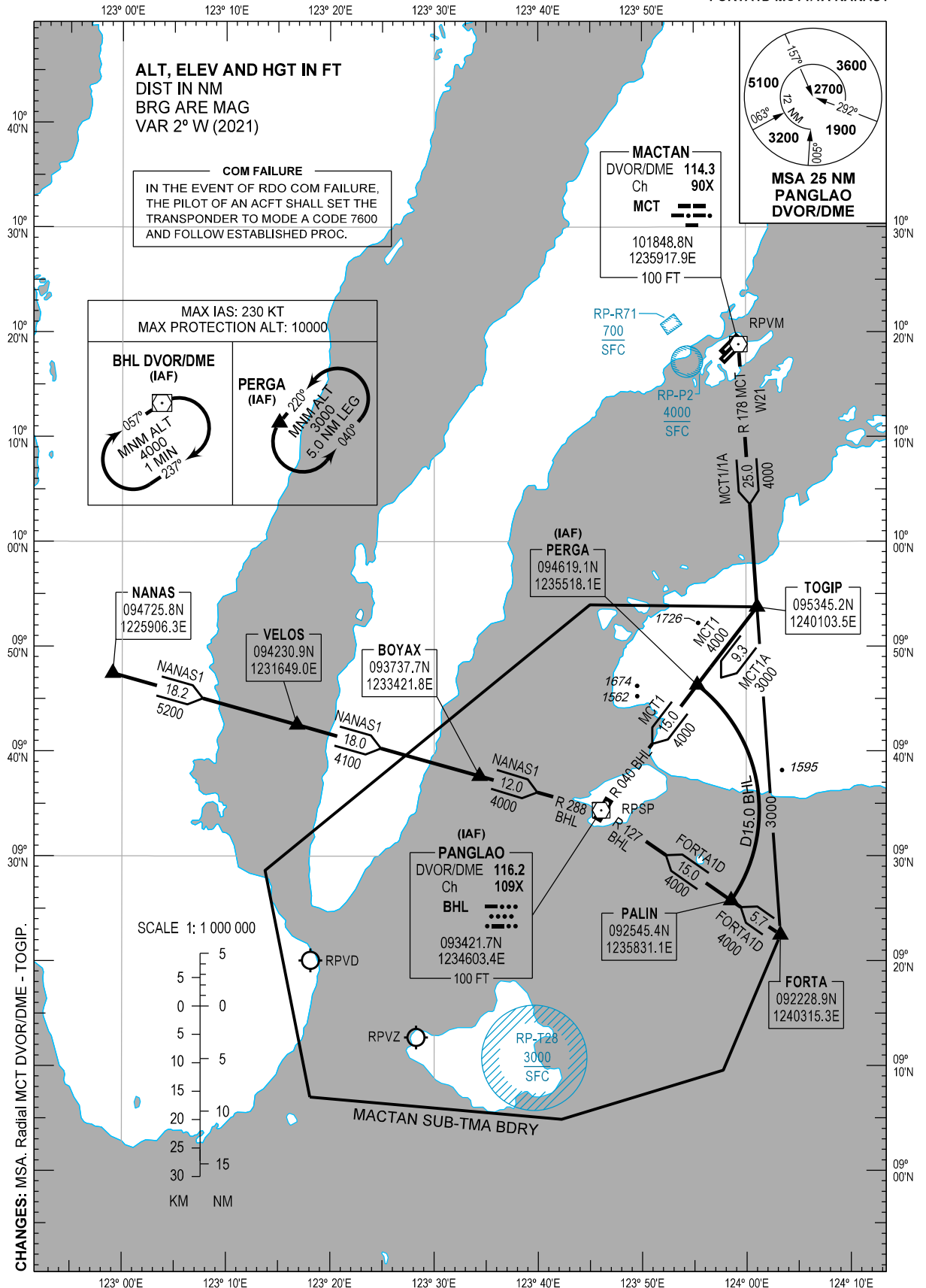
TRANSITION
ALTITUDE
11000 FT

ACC - 124.9 / 125.7 (SOUTH)
- 132.5 / 125.7 (SOUTHEAST)
- 8942 / 5655 (SEA-2 HF)
- 8903 (CWP HF)
APP - 124.7 / 121.2 (MACTAN)
TWR - 124.5 / 128.8

BOHOL/Bohol-
Panglao Intl (RPSP)

RWY 21

FORTA1D MCT1/1A NANAS1



ARRIVAL ROUTE DESCRIPTION

STAR	ROUTE	PROCEDURE	REMARKS
FORTA1D	FORTA - PALIN - BHL DVOR/DME	From FORTA on BHL DVOR/DME Radial 127 to PALIN, to BHL DVOR/ DME at or above 4000 FT.	
MCT1	MCT DVOR/DME - TOGIP - PERGA - BHL DVOR/DME	From MCT DVOR/DME to TOGIP on MCT DVOR/DME Radial 178, from TOGIP turn right to PERGA on BHL DVOR/DME Radial 040, to BHL DVOR/DME at or above 4000 FT.	
MCT1A	MCT DVOR/DME - TOGIP - PERGA	From MCT DVOR/DME to TOGIP on MCT DVOR/DME Radial 178, from TOGIP turn right to PERGA on BHL DVOR/DME Radial 040 at or above 3000 FT.	
NANAS1	NANAS - VELOS - BOYAX - BHL DVOR/DME	From NANAS on BHL DVOR/DME Radial 288 to VELOS at or above 5200 FT, to BOYAX at or above 4100 FT, to BHL DVOR/DME at or above 4000 FT.	

CHANGES: RTE Description. MCT1 PROC Description.