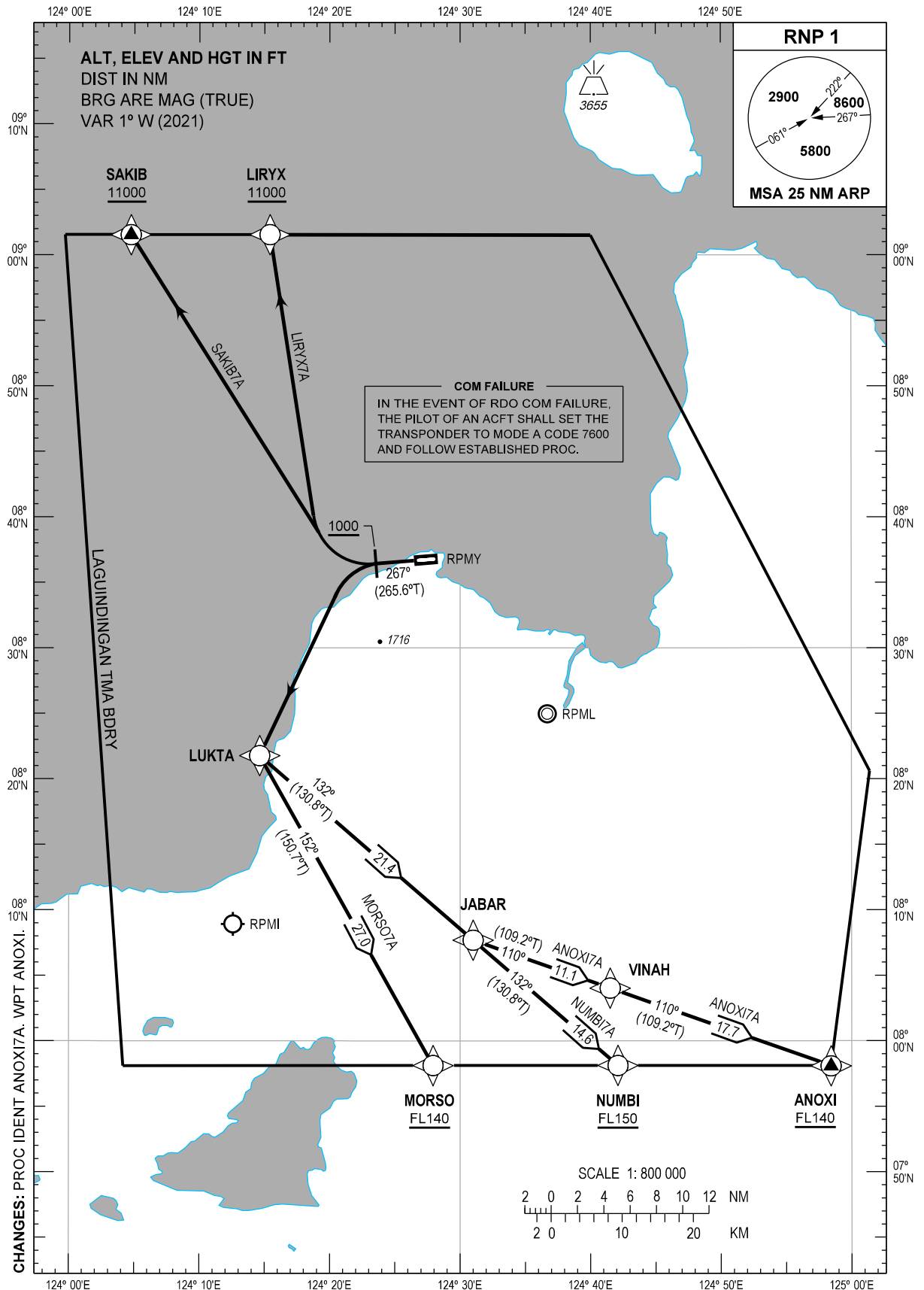


**STANDARD DEPARTURE  
CHART - INSTRUMENT  
(SID) - ICAO**

TRANSITION  
ALTITUDE  
11000 FT

TWR - 122.6 / 118.6  
APP - 125.5 / 122.3  
ACC - 124.9 / 125.7 (SOUTH)  
- 132.5 / 125.7 (SOUTHEAST)  
- 8942 / 5655 (SEA-2 HF)  
- 8903 (CWP HF)

**MISAMIS ORIENTAL/  
Laguindingan (RPMY)  
RNP SID RWY 27  
ANOXITA LIRYX7A MORSO7A  
NUMBITA SAKIB7A**



**DEPARTURE ROUTE DESCRIPTION**

SID	TAKE-OFF	PROCEDURE	REMARKS
<b>ANOXI7A</b>	RWY 27	Climb on course 267°M to 1000 FT, turn left direct to LUKTA, to JABAR, to VINAH then to ANOXI.	(1) ATS gradient of 4.4% to cross ANOXI at or above FL140. (2) Required climb gradient of 3.6% to LUKTA.
<b>LIRYX7A</b>		Climb on course 267°M to 1000 FT, turn right direct to LIRYX.	ATS gradient of 5.8% to reach LIRYX at or above 11000 FT.
<b>MORSO7A</b>		Climb on course 267°M to 1000 FT, turn left direct to LUKTA, then to MORSO.	(1) ATS gradient of 4.9% to reach MORSO at or above FL140. (2) Required climb gradient of 3.6% to LUKTA.
<b>NUMBI7A</b>		Climb on course 267°M to 1000 FT, turn left direct to LUKTA, to JABAR, then to NUMBI.	(1) ATS gradient of 4.5% to reach NUMBI at or above FL150. (2) Required climb gradient of 3.6% to LUKTA.
<b>SAKIB7A</b>		Climb on course 267°M to 1000 FT, turn right direct to SAKIB.	ATS gradient of 5.1% to reach SAKIB at or above 11000 FT.

**WAYPOINT LIST**

Waypoint Name	Latitude	Longitude	Type
ANOXI	075806.8N	1245825.3E	Fly-by
JABAR	080741.0N	1243100.0E	Fly-by
LIRYX	090132.6N	1241524.5E	Fly-by
LUKTA	082146.3N	1241437.8E	Fly-by
MORSO	075806.9N	1242755.7E	Fly-by
NUMBI	075807.2N	1244205.7E	Fly-by
SAKIB	090133.1N	1240444.1E	Fly-by
VINAH	080401.5N	1244129.9E	Fly-by

**PROPOSED CODING FOR DEPARTURE RNP SID RWY 27**

**Table 1: ANOXI7A**

Serial Number	Path Descriptor	Waypoint Identifier	Flyover	Course °M (°T)	Magnetic Variation	Distance (NM)	Turn Direction	Altitude (FT)	Speed limit (KT)	VPA/TCH	Navigation Specification	Transition Identifier
10	CA	-	-	267 (265.6)	+1	-	-	+1000	-	-	RNP1	RW27
20	DF	LUKTA	-	-	-	-	L	-	-	-	RNP1	RW27
30	TF	JABAR	-	132 (130.8)	+1	21.4	L	-	-	-	RNP1	RW27
40	TF	VINAH	-	110 (109.2)	+1	11.1	L	-	-	-	RNP1	RW27
50	TF	ANOXI	-	110 (109.2)	+1	17.7	-	+FL140	-	-	RNP1	RW27

**Table 2: LIRYX7A**

Serial Number	Path Descriptor	Waypoint Identifier	Flyover	Course °M (°T)	Magnetic Variation	Distance (NM)	Turn Direction	Altitude (FT)	Speed limit (KT)	VPA/TCH	Navigation Specification	Transition Identifier
10	CA	-	-	267 (265.6)	+1	-	-	+1000	-	-	RNP1	RW27
20	DF	LIRYX	-	-	-	-	R	+11000	-	-	RNP1	RW27

**CHANGES:** PROC IDENT ANOXI7A. WPT ANOXI.