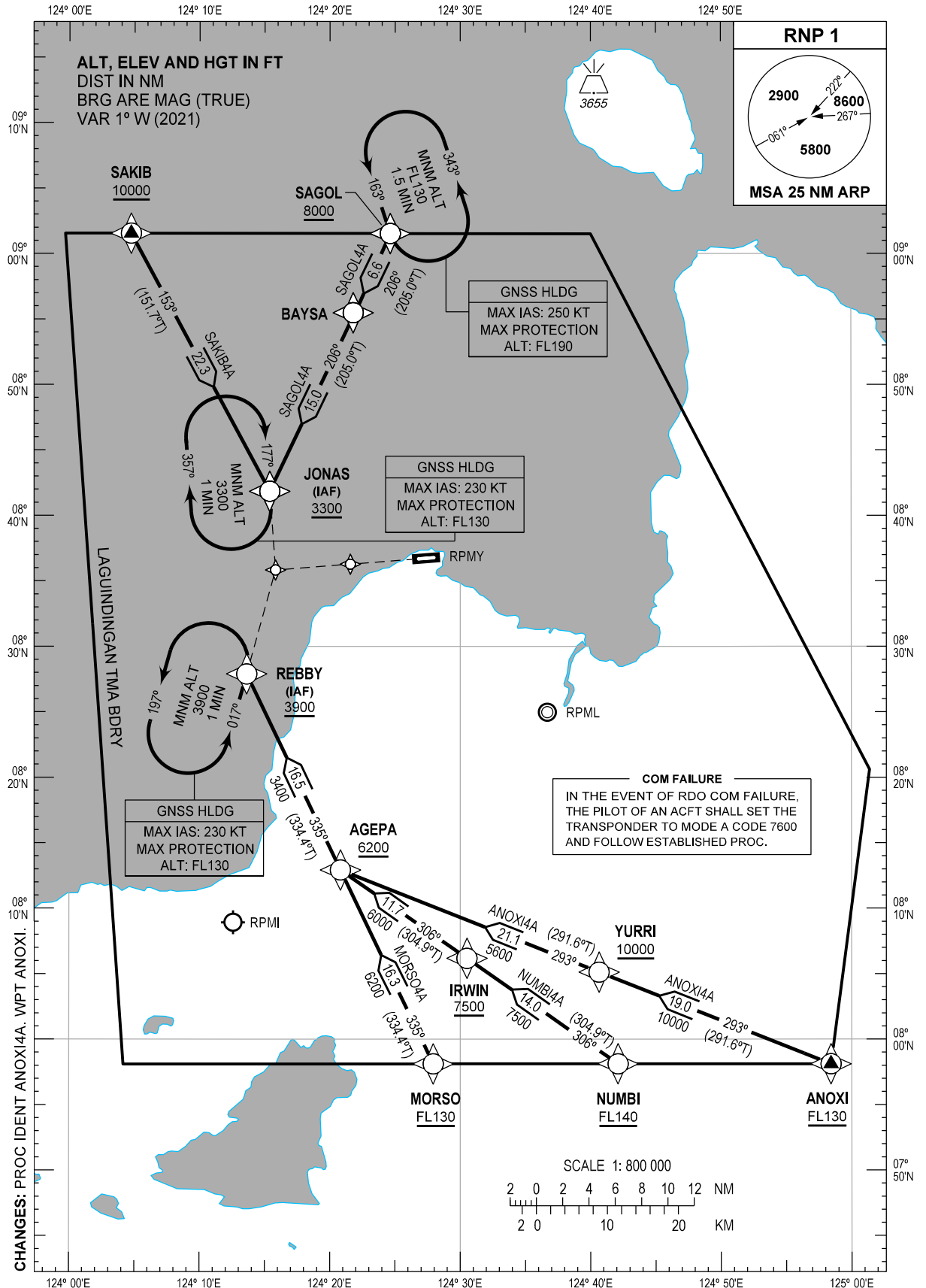


STANDARD ARRIVAL
CHART - INSTRUMENT
(STAR) - ICAO

TRANSITION
ALTITUDE
11000 FT

ACC - 124.9 / 125.7 (SOUTH)
- 132.5 / 125.7 (SOUTHEAST)
- 8942 / 5655 (SEA-2 HF)
- 8903 (CWP HF)
APP - 125.5 / 122.3
TWR - 122.6 / 118.6

MISAMIS ORIENTAL/
Laguindingan (RPMY)
RNP STAR RWY 09
ANOXI4A MORSO4A NUMB14A
SAGOL4A SAKIB4A



ARRIVAL ROUTE DESCRIPTION

STAR	ROUTE	PROCEDURE	REMARKS
ANOXI4A	ANOXI - YURRI - AGEPA - REBBY	From ANOXI at or above FL130, to YURRI at or above 10000 FT, to AGEPA at or above 6200 FT, to REBBY at or above 3900 FT.	
MORSO4A	MORSO - AGEPA - REBBY	From MORSO at or above FL130, to AGEPA at or above 6200 FT, to REBBY at or above 3900 FT.	
NUMBI4A	NUMBI - IRWIN - AGEPA - REBBY	From NUMBI at or above FL140, to IRWIN at or above 7500 FT, to AGEPA at or above 6200 FT, to REBBY at or above 3900 FT.	
SAGOL4A	SAGOL - BAYSA - JONAS	From SAGOL at or above 8000 FT, to BAYSA, to JONAS at or above 3300 FT.	
SAKIB4A	SAKIB - JONAS	From SAKIB at or above 10000 FT, to JONAS at or above 3300 FT.	

WAYPOINT LIST

Waypoint Name	Latitude	Longitude	Type
AGEPA	081255.4N	1242049.0E	Fly-by
ANOXI	075806.8N	1245825.3E	Fly-by
BAYSA	085529.0N	1242146.9E	Fly-by
IRWIN	080610.8N	1243031.0E	Fly-by
JONAS	084150.7N	1241522.8E	Fly-by
MORSO	075806.9N	1242755.7E	Fly-by
NUMBI	075807.2N	1244205.7E	Fly-by
REBBY	082753.8N	1241337.0E	Fly-by
SAGOL	090132.0N	1242437.5E	Fly-by
SAKIB	090133.1N	1240444.1E	Fly-by
YURRI	080507.3N	1244038.9E	Fly-by

PROPOSED CODING FOR ARRIVAL RNP STAR RWY 09

Table 1: ANOXI4A

Serial Number	Path Descriptor	Waypoint Identifier	Flyover	Course °M (°T)	Magnetic Variation	Distance (NM)	Turn Direction	Altitude (FT)	Speed limit (KT)	VPA/TCH	Navigation Specification	Transition Identifier
10	IF	ANOXI	-	-	-	-	-	+FL130	-	-	RNP1	RW09
20	TF	YURRI	-	293 (291.6)	+1	19.0	-	+10000	-	-	RNP1	RW09
30	TF	AGEPA	-	293 (291.6)	+1	21.1	-	+6200	-	-	RNP1	RW09
40	TF	REBBY	-	335 (334.4)	+1	16.5	R	+3900	-	-	RNP1	RW09

CHANGES: PROC IDENT ANOXI4A. WPT ANOXI.