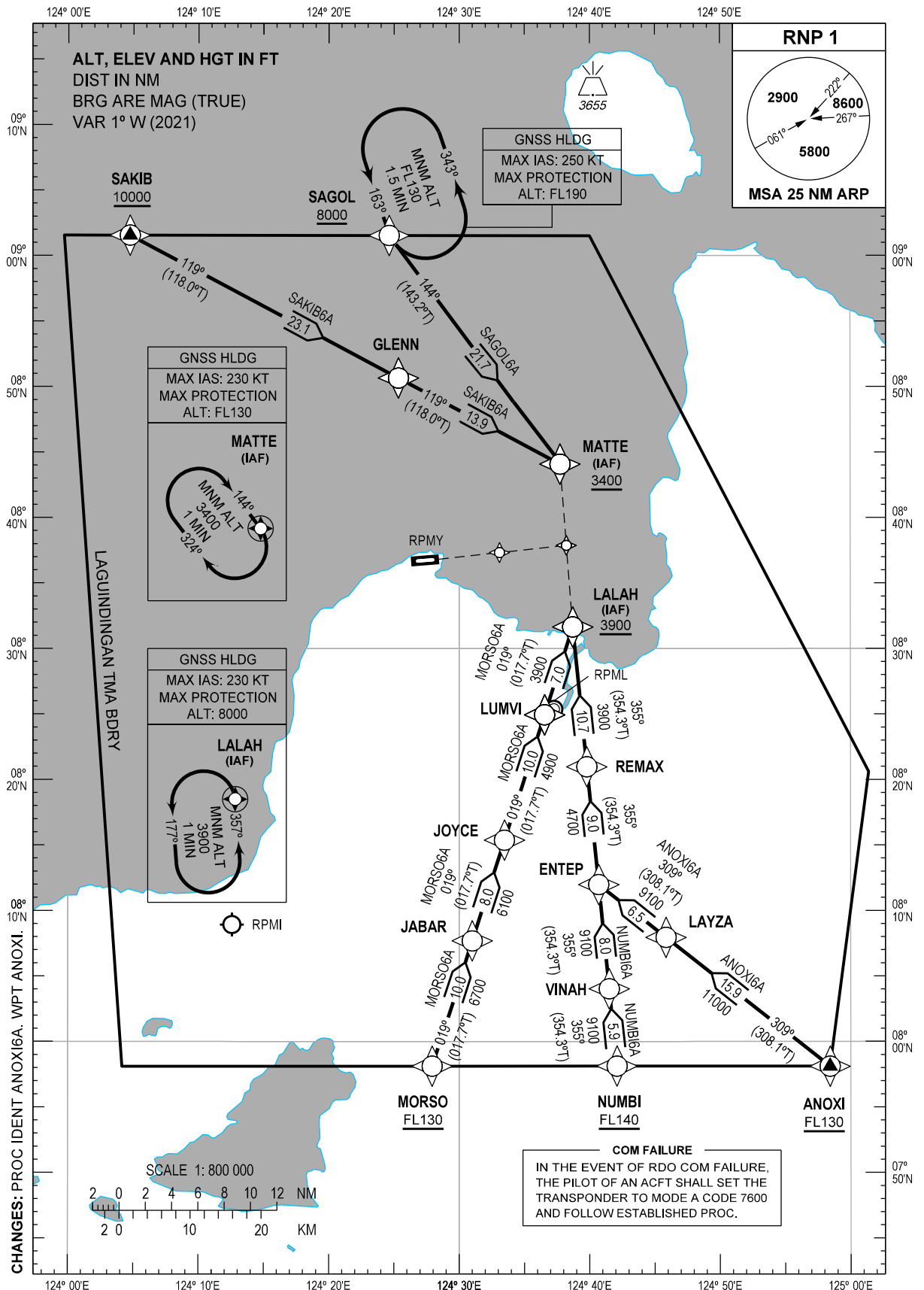


STANDARD ARRIVAL
CHART - INSTRUMENT
(STAR) - ICAO

TRANSITION
ALTITUDE
11000 FT

ACC - 124.9 / 125.7 (SOUTH)
- 132.5 / 125.7 (SOUTHEAST)
- 8942 / 5655 (SEA-2 HF)
- 8903 (CWP HF)
APP - 125.5 / 122.3
TWR - 122.6 / 118.6

MISAMIS ORIENTAL/
Laguindingan (RPMY)
RNP STAR RWY 27
ANOX16A MORSO6A NUMB16A
SAGOL6A SAKIB6A



ARRIVAL ROUTE DESCRIPTION

STAR	ROUTE	PROCEDURE	REMARKS
ANOXI6A	ANOXI - LAYZA - ENTEP - REMAX - LALAH	From ANOXI at or above FL130, to LAYZA, to ENTEP, to REMAX, to LALAH at or above 3900 FT.	
MORSO6A	MORSO - JABAR - JOYCE - LUMVI - LALAH	From MORSO at or above FL130, to JABAR, to JOYCE, to LUMVI, to LALAH at or above 3900 FT.	
NUMBI6A	NUMBI - VINAH - ENTEP - REMAX - LALAH	From NUMBI at or above FL140, to VINAH, to ENTEP, to REMAX, to LALAH at or above 3900 FT.	
SAGOL6A	SAGOL - MATTE	From SAGOL at or above 8000 FT, to MATTE at or above 3400 FT.	
SAKIB6A	SAKIB - GLENN - MATTE	From SAKIB at or above 10000 FT, to GLENN, to MATTE at or above 3400 FT.	

WAYPOINT LIST

Waypoint Name	Latitude	Longitude	Type
ANOXI	075806.8N	1245825.3E	Fly-by
ENTEP	081158.7N	1244041.7E	Fly-by
GLENN	085039.2N	1242520.2E	Fly-by
JABAR	080741.0N	1243100.0E	Fly-by
JOYCE	081522.4N	1243328.3E	Fly-by
LALAH	083139.1N	1243842.4E	Fly-by
LAYZA	080756.9N	1244551.2E	Fly-by
LUMVI	082456.5N	1243633.0E	Fly-by
MATTE	084404.8N	1243744.1E	Fly-by
MORSO	075806.9N	1242755.7E	Fly-by
NUMBI	075807.2N	1244205.7E	Fly-by
REMAX	082058.6N	1243947.2E	Fly-by
SAGOL	090132.0N	1242437.5E	Fly-by
SAKIB	090133.1N	1240444.1E	Fly-by
VINAH	080401.5N	1244129.9E	Fly-by

PROPOSED CODING FOR ARRIVAL RNP STAR RWY 27

Table 1: ANOXI6A

Serial Number	Path Descriptor	Waypoint Identifier	Flyover	Course °M (°T)	Magnetic Variation	Distance (NM)	Turn Direction	Altitude (FT)	Speed limit (KT)	VPA/TCH	Navigation Specification	Transition Identifier
10	IF	ANOXI	-	-	-	-	-	+FL130	-	-	RNP1	RW27
20	TF	LAYZA	-	309 (308.1)	+1	15.9	-	-	-	-	RNP1	RW27
30	TF	ENTEP	-	309 (308.1)	+1	6.5	-	-	-	-	RNP1	RW27
40	TF	REMAX	-	355 (354.3)	+1	9.0	-	-	-	-	RNP1	RW27
50	TF	LALAH	-	355 (354.3)	+1	10.7	-	+3900	-	-	RNP1	RW27

CHANGES: PROC IDENT ANOXI6A. WPT ANOXI.