

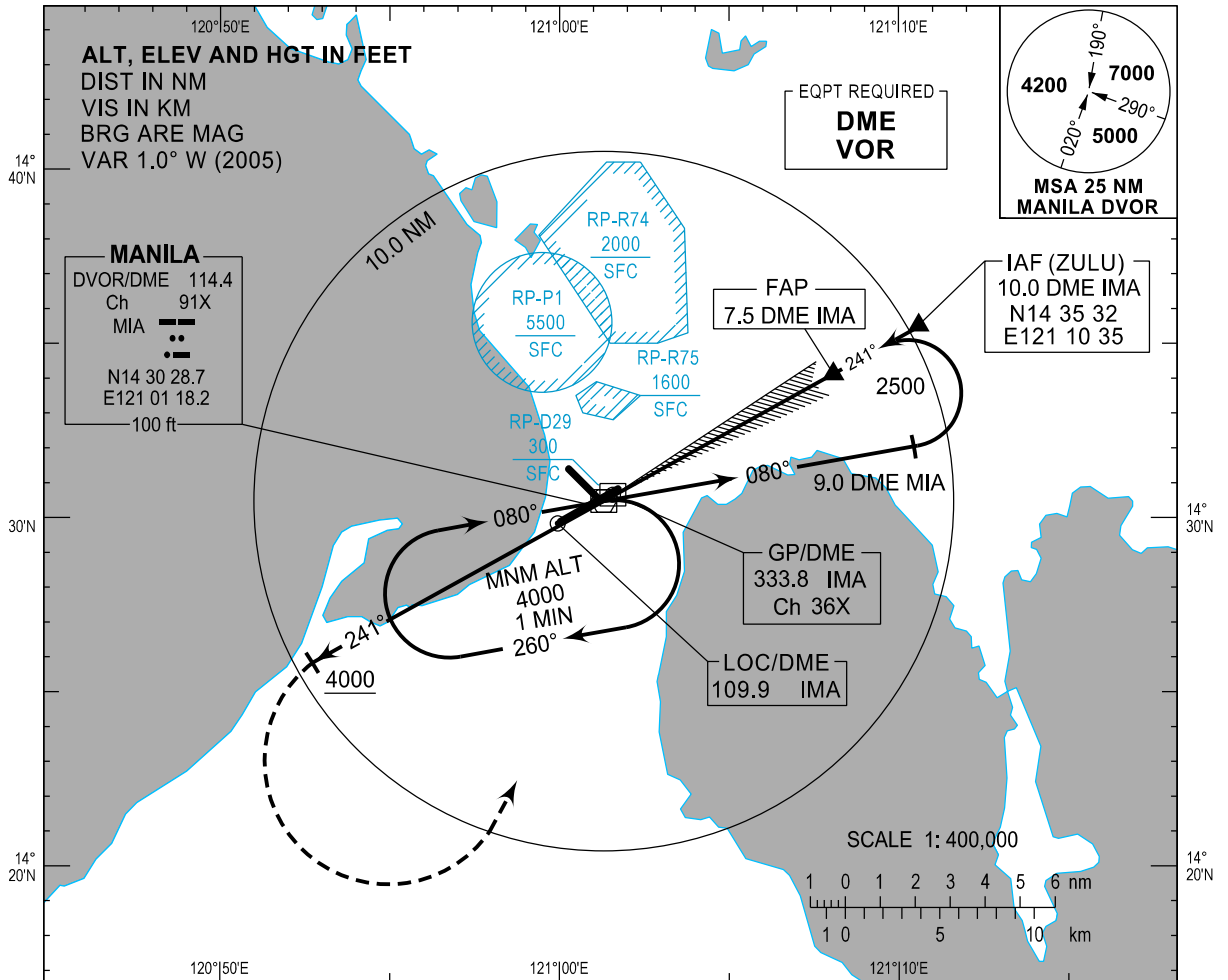
**INSTRUMENT
APPROACH
CHART - ICAO**

AD ELEV 75 ft
HEIGHTS RELATED TO
THR RWY 24

APP - 121.1 / 124.8
TWR - 118.1 / 118.4
GND - 121.8 / 122.0

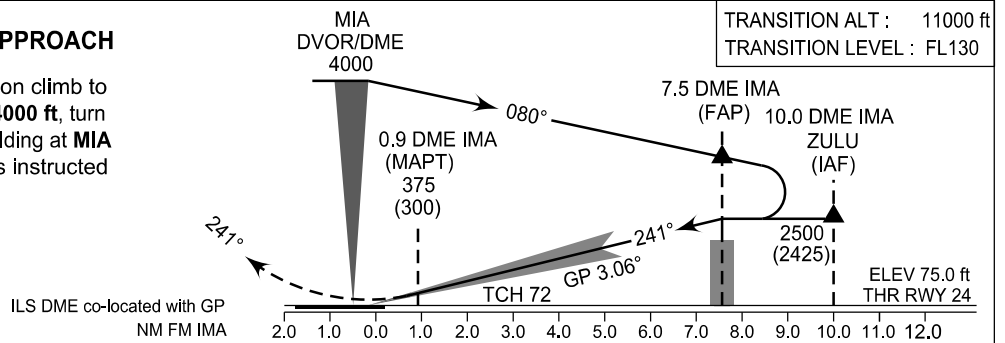
MANILA/Ninoy Aquino Intl (RPLL)

ILS OR LOC RWY 24



MISSED APPROACH

Track **241°** on climb to **4000 ft**. At **4000 ft**, turn **LEFT** for holding at **MIA DVOR** or as instructed by ATC.



CHANGE: Chart Re-indexed and Resolution.

| | | | | | | | | | | |
|----------------|-----------------|-----------------|-----------------|-----------------|--------|-------|-------|-------|--|--|
| OCA/H | A | B | C | D | | | | | | |
| ILS/DME | 375 (300) - 0.8 | | | | | | | | | |
| LOC | 500 (425) - 1.8 | | 500 (425) - 2.0 | 500 (425) - 2.4 | | | | | | |
| CIRCLING OCA/H | A | B | C | D | | | | | | |
| SECTOR S | 470 (395) - 1.9 | 570 (495) - 2.8 | 670 (595) - 3.7 | 770 (695) - 4.6 | | | | | | |
| SECTOR NW | 630 (555) - 1.9 | 630 (555) - 2.8 | 670 (595) - 3.7 | 770 (695) - 4.6 | | | | | | |
| ILS/DME | 7.5 | 7.0 | 6.0 | 5.0 | 4.0 | 3.0 | 2.0 | 1.0 | | |
| ALT | 2500 | 2350 | 2025 | 1700 | 1375 | 1050 | 725 | 400 | | |
| HGT | (2425) | (2275) | (1950) | (1625) | (1300) | (975) | (650) | (325) | | |