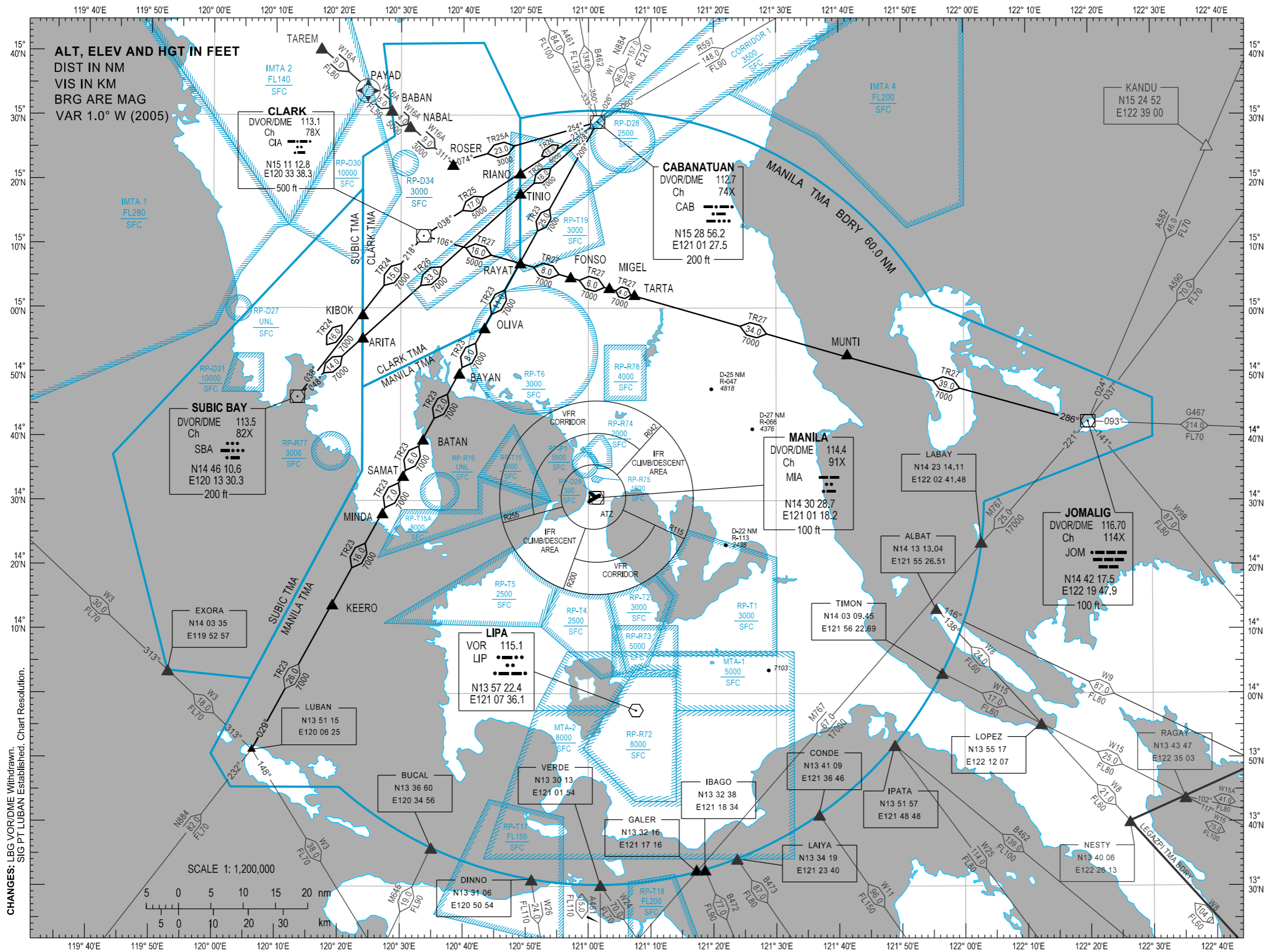
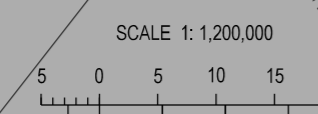


### Tracking System within MANILA, CLARK and SUBIC TMAs



CHANGES: LBG, VOR/DME Withdrawn. SIG PT LUBAN Established. Chart Resolution.



**COORDINATES OF REPORTING POINTS**

ARITA	N14 55 28	E120 23 53
BABAN	N15 30 48	E120 28 28
BATAN	N14 39 37	E120 33 33
BAYAN	N14 49 53	E120 39 20
FONSO	N15 04 54	E120 57 06
KIBOK	N14 59 06	E120 23 53
KEERO	N14 13 56	E120 19 07
MIGEL	N15 03 14	E121 03 18
MINDA	N14 28 08	E120 27 06
MUNTI	N14 52 53	E121 41 19
NABAL	N15 28 17	E120 31 25
OLIVA	N14 56 58	E120 43 20
PAYAD	N15 34 06	E120 24 37
RAYAT	N15 07 04	E120 49 03
RIANO	N15 21 03	E120 49 03
ROSER	N15 22 23	E120 38 17
SAMAT	N14 33 57	E120 30 22
TAREM	N15 40 27	E120 17 10
TARTA	N15 02 08	E121 07 19
TINIO	N15 17 55	E120 49 03

**LEGEND:**  
R - Radial  
D - Distance from VOR  
• - Spot Elevation

**NOTE:**  
ALL TRACK ROUTES UPPER LIMIT IS UNL EXCEPT FOR TR23-FL210.

INTENTIONALLY  
LEFT  
BLANK