

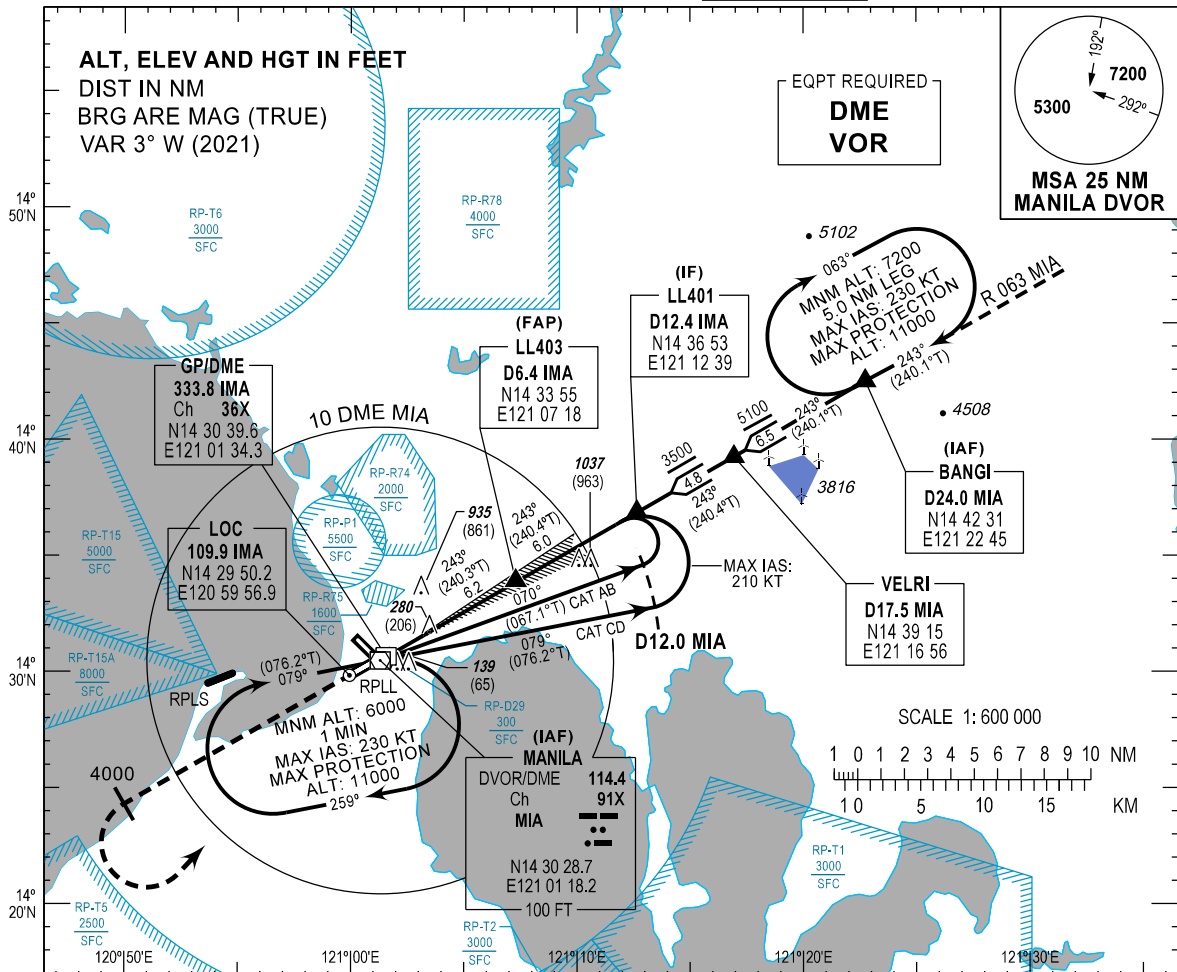
**INSTRUMENT
APPROACH
CHART - ICAO**

AERODROME ELEV 75 FT

HEIGHTS RELATED TO
THR RWY 24 - ELEV 74 FT

APP - 124.4 (FMI)
- 119.9 (FMN)
- 124.8 (FMS)
- 127.7 (SRY)
TWR - 118.1 / 118.4
GND - 121.8 / 122.0

**MANILA/Ninoy
Aquino Intl (RPLL)
ILS OR LOC RWY 24**



MISSED APPROACH

Climb runway heading **4000 FT**, turn left direct to **MIA DVOR/DME** climbing to **6000 FT** and hold or as instructed by ATC.

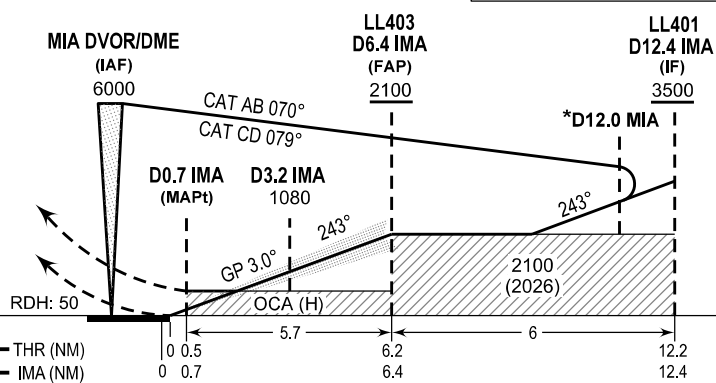
*Aircraft executing a BASE TURN - maintain 3500 FT until completion of turn

COORDINATES OF MAPt AND D3.2 IMA:

MAPt - N14 31 04 E121 02 10
D3.2 IMA - N14 32 19 E121 04 24

THR ELEV 74
(THR RWY 24)

TRANSITION ALT : 11000
TRANSITION LEVEL : FL130



	MIA DVOR/DME (IAF) 6000					
	A	B	C	D	NO CIRCLING	
OCA (H)						
ILS	375 (301)					
LOC	610 (536)					
CIRCLING	870 (795)	1030 (955)	1130 (1055)			
NM TO IMA	6.4	5	4	3	2	1.7
ALT (HGT)	2100 (2026)	1660 (1586)	1340 (1266)	1020 (946)	700 (626)	610 (536)

NEW CHART