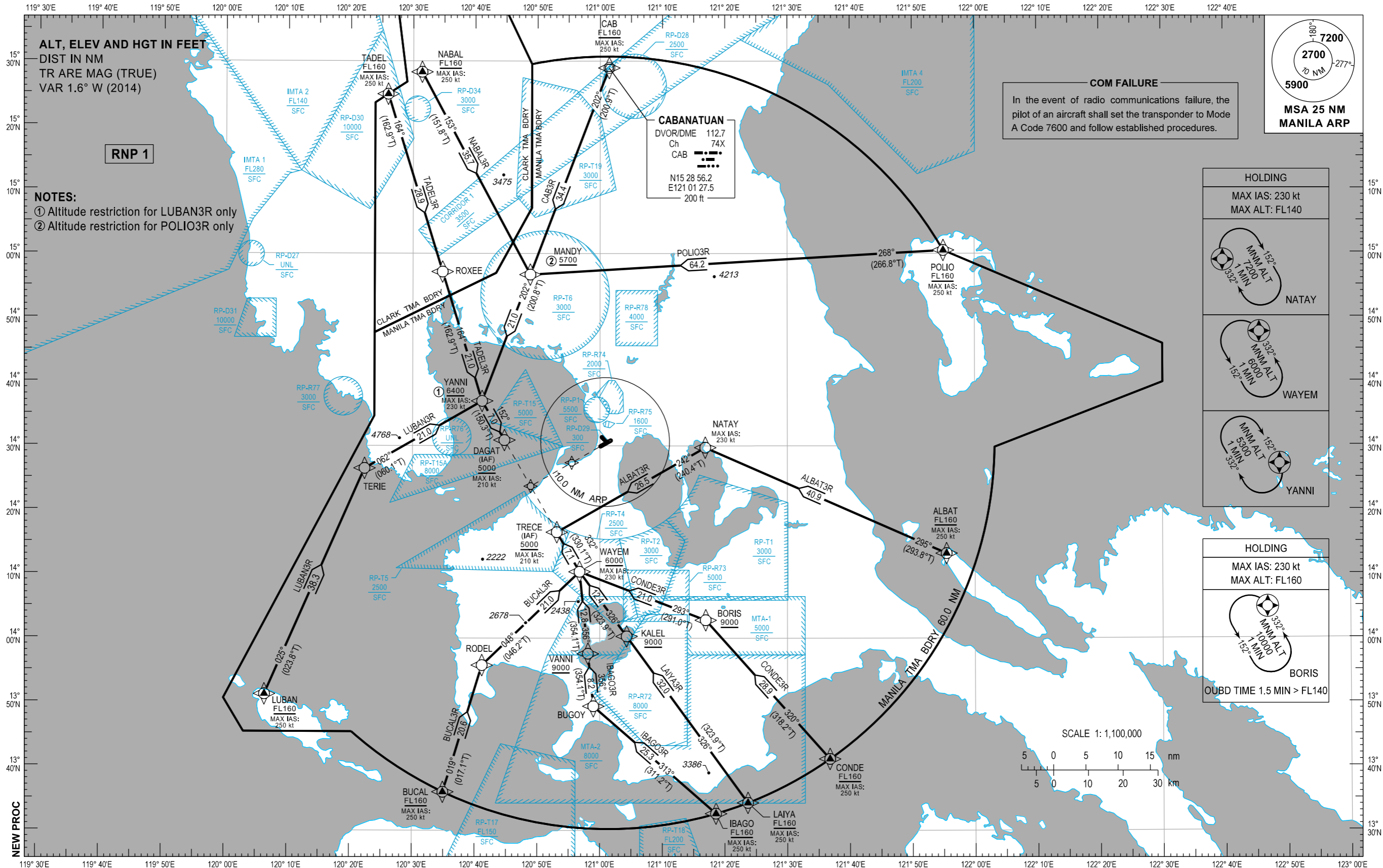


STANDARD ARRIVAL
CHART - INSTRUMENT
(STAR)

MANILA/Ninoy Aquino Intl (RPLL)
RNP STAR RWY 06
ALBAT3R BUCAL3R CAB3R CONDE3R IBAGO3R
LAIYA3R LUBAN3R NABAL3R POLIO3R TADEL3R

TRANSITION
ALTITUDE
11,000 ft

APP - 121.1 / 124.8
TWR - 118.1 / 118.4
GND - 121.8 / 122.0



ARRIVAL ROUTE DESCRIPTION

STAR	ROUTE	PROCEDURE	REMARKS
ALBAT3R	ALBAT - NATAY - TRECE	From ALBAT at or above FL160, to NATAY, to TRECE at or above 5000FT.	
BUCAL3R	BUCAL - RODEL - WAYEM - TRECE	From BUCAL at or above FL160, to RODEL, to WAYEM at or above 6000FT, to TRECE at or above 5000FT.	
CAB3R	CAB - MANDY - YANNI - DAGAT	From CAB at or above FL160, to MANDY, to YANNI, to DAGAT at or above 5000FT.	
CONDE3R	CONDE - BORIS - WAYEM - TRECE	From CONDE at or above FL160, to BORIS at or above 9000FT, to WAYEM at or above 6000FT, to TRECE at or above 5000FT.	
IBAGO3R	IBAGO - BUGOY - VANNI - WAYEM - TRECE	From IBAGO at or above FL160, to BUGOY, to VANNI at or above 9000FT, to WAYEM at or above 6000FT, to TRECE at or above 5000FT.	
LAIYA3R	LAIYA - KALEL - WAYEM - TRECE	From LAIYA at or above FL160, to KALEL at or above 9000FT, to WAYEM at or above 6000FT, to TRECE at or above 5000FT.	
LUBAN3R	LUBAN - TERIE - YANNI - DAGAT	From LUBAN at or above FL160, to TERIE, to YANNI at or above 6400FT, to DAGAT at or above 5000FT.	
NABAL3R	NABAL - MANDY - YANNI - DAGAT	From NABAL at or above FL160, to MANDY, to YANNI, to DAGAT at or above 5000FT.	
POLIO3R	POLIO - MANDY - YANNI - DAGAT	From POLIO at or above FL160, to MANDY at or above 5700FT, to YANNI, to DAGAT at or above 5000FT.	
TADEL3R	TADEL - ROXEE - YANNI - DAGAT	From TADEL at or above FL160, to ROXEE, to YANNI, to DAGAT at or above 5000FT.	

WAYPOINT LIST

Waypoint Name	Latitude	Longitude	Type
ALBAT	N14 13 13	E121 55 27	Fly-by
BORIS	N14 02 49	E121 16 56	Fly-by
BUCAL	N13 36 00	E120 34 56	Fly-by
BUGOY	N13 49 23	E120 58 59	Fly-by
CAB	N15 28 56	E121 01 27	Fly-by
CONDE	N13 41 09	E121 36 46	Fly-by
DAGAT	N14 30 53	E120 44 43	Fly-by
IBAGO	N13 32 38	E121 18 34	Fly-by
KALEL	N14 00 17	E121 04 18	Fly-by
LAIYA	N13 34 19	E121 23 40	Fly-by
LUBAN	N13 51 15	E120 06 25	Fly-by
MANDY	N14 56 42	E120 48 49	Fly-by
NABAL	N15 28 17	E120 31 25	Fly-by
NATAY	N14 29 43	E121 16 52	Fly-by
POLIO	N15 00 30	E121 55 00	Fly-by
RODEL	N13 55 46	E120 41 10	Fly-by
ROXEE	N14 57 08	E120 34 46	Fly-by
TADEL	N15 24 51	E120 25 58	Fly-by
TERIE	N14 26 29	E120 22 20	Fly-by
TRECE	N14 16 31	E120 53 07	Fly-by
VANNI	N13 57 34	E120 58 07	Fly-by
WAYEM	N14 10 21	E120 56 46	Fly-by
YANNI	N14 36 59	E120 41 08	Fly-by

PROPOSED CODING FOR ARRIVAL RNP STAR RWY06

Table 1: ALBAT3R

SEQ. NO.	PD	W/P ID	Flyover	Course Track °M (°T)	Magnetic Variation	Distance (NM)	TD	ALT (FT)	Speed (knots)	VPA (°)	Nav. Spec	Transition ID
10	IF	ALBAT	N	-	-	-	-	+FL160	250	-	RNP1	RW06
20	TF	NATAY	N	295° (293.8°)	-	40.9	-	-	230	-	RNP1	RW06
30	TF	TRECE	N	242° (240.4°)	-	26.5	-	+5000	210	-	RNP1	RW06

Table 2: BUCAL3R

SEQ. NO.	PD	W/P ID	Flyover	Course Track °M (°T)	Magnetic Variation	Distance (NM)	TD	ALT (FT)	Speed (knots)	VPA (°)	Nav. Spec	Transition ID
10	IF	BUCAL	N	-	-	-	-	+FL160	250	-	RNP1	RW06
20	TF	RODEL	N	019° (017.1°)	-	20.6	-	-	-	-	RNP1	RW06
30	TF	WAYEM	N	048° (046.2°)	-	21.0	-	+6000	230	-	RNP1	RW06
40	TF	TRECE	N	332° (330.1°)	-	7.1	-	+5000	210	-	RNP1	RW06

Table 3: CAB3R

SEQ. NO.	PD	W/P ID	Flyover	Course Track °M (°T)	Magnetic Variation	Distance (NM)	TD	ALT (FT)	Speed (knots)	VPA (°)	Nav. Spec	Transition ID
10	IF	CAB	N	-	-	-	-	+FL160	250	-	RNP1	RW06
20	TF	MANDY	N	202° (200.9°)	-	34.4	-	-	-	-	RNP1	RW06
30	TF	YANNI	N	202° (200.8°)	-	21.0	-	-	230	-	RNP1	RW06
40	TF	DAGAT	N	152° (150.3°)	-	7.0	-	+5000	210	-	RNP1	RW06

Table 4: CONDE3R

SEQ. NO.	PD	W/P ID	Flyover	Course Track °M (°T)	Magnetic Variation	Distance (NM)	TD	ALT (FT)	Speed (knots)	VPA (°)	Nav. Spec	Transition ID
10	IF	CONDE	N	-	-	-	-	+FL160	250	-	RNP1	RW06
20	TF	BORIS	N	320° (318.2°)	-	28.9	-	+9000	-	-	RNP1	RW06
30	TF	WAYEM	N	293° (291.0°)	-	21.0	-	+6000	230	-	RNP1	RW06
40	TF	TRECE	N	332° (330.1°)	-	7.1	-	+5000	210	-	RNP1	RW06

Table 5: IBAGO3R

SEQ. NO.	PD	W/P ID	Flyover	Course Track °M (°T)	Magnetic Variation	Distance (NM)	TD	ALT (FT)	Speed (knots)	VPA (°)	Nav. Spec	Transition ID
10	IF	IBAGO	N	-	-	-	-	+FL160	250	-	RNP1	RW06
20	TF	BUGOY	N	313° (311.2°)	-	25.3	-	-	-	-	RNP1	RW06
30	TF	VANNI	N	356° (354.1°)	-	8.2	-	+9000	-	-	RNP1	RW06
40	TF	WAYEM	N	356° (354.1°)	-	12.8	-	+6000	230	-	RNP1	RW06
50	TF	TRECE	N	332° (330.1°)	-	7.1	-	+5000	210	-	RNP1	RW06

Table 6: LAIYA3R

SEQ. NO.	PD	W/P ID	Flyover	Course Track °M (°T)	Magnetic Variation	Distance (NM)	TD	ALT (FT)	Speed (knots)	VPA (°)	Nav. Spec	Transition ID
10	IF	LAIYA	N	-	-	-	-	+FL160	250	-	RNP1	RW06
20	TF	KALEL	N	326° (323.9°)	-	32.0	-	+9000	-	-	RNP1	RW06
30	TF	WAYEM	N	326° (323.9°)	-	12.4	-	+6000	230	-	RNP1	RW06
40	TF	TRECE	N	332° (330.1°)	-	7.1	-	+5000	210	-	RNP1	RW06

Table 7: LUBAN3R

SEQ. NO.	PD	W/P ID	Flyover	Course Track °M (°T)	Magnetic Variation	Distance (NM)	TD	ALT (FT)	Speed (knots)	VPA (°)	Nav. Spec	Transition ID
10	IF	LUBAN	N	-	-	-	-	+FL160	250	-	RNP1	RW06
20	TF	TERIE	N	025° (023.8°)	-	38.3	-	-	-	-	RNP1	RW06
30	TF	YANNI	N	062° (060.1°)	-	21.0	-	+6400	230	-	RNP1	RW06
40	TF	DAGAT	N	152° (150.3°)	-	7.0	-	+5000	210	-	RNP1	RW06

Table 8: NABAL3R

SEQ. NO.	PD	W/P ID	Flyover	Course Track °M (°T)	Magnetic Variation	Distance (NM)	TD	ALT (FT)	Speed (knots)	VPA (°)	Nav. Spec	Transition ID
10	IF	NABAL	N	-	-	-	-	+FL160	250	-	RNP1	RW06
20	TF	MANDY	N	153° (151.8°)	-	35.7	-	-	-	-	RNP1	RW06
30	TF	YANNI	N	202° (200.8°)	-	21.0	-	-	230	-	RNP1	RW06
40	TF	DAGAT	N	152° (150.3°)	-	7.0	-	+5000	210	-	RNP1	RW06

NEW CODING TABLE

Table 9: POLIO3R

SEQ. NO.	PD	W/P ID	Flyover	Course Track °M (°T)	Magnetic Variation	Distance (NM)	TD	ALT (FT)	Speed (knots)	VPA (°)	Nav. Spec	Transition ID
10	IF	POLIO	N	-	-	-	-	+FL160	250	-	RNP1	RW06
20	TF	MANDY	N	268° (266.8°)	-	64.2	-	+5700	-	-	RNP1	RW06
30	TF	YANNI	N	202° (200.8°)	-	21.0	-	-	230	-	RNP1	RW06
40	TF	DAGAT	N	152° (150.3°)	-	7.0	-	+5000	210	-	RNP1	RW06

Table 10: TADEL3R

SEQ. NO.	PD	W/P ID	Flyover	Course Track °M (°T)	Magnetic Variation	Distance (NM)	TD	ALT (FT)	Speed (knots)	VPA (°)	Nav. Spec	Transition ID
10	IF	TADEL	N	-	-	-	-	+FL160	250	-	RNP1	RW06
20	TF	ROXEE	N	164° (162.9°)	-	28.9	-	-	-	-	RNP1	RW06
30	TF	YANNI	N	164° (162.9°)	-	21.0	-	-	230	-	RNP1	RW06
40	TF	DAGAT	N	152° (150.3°)	-	7.0	-	+5000	210	-	RNP1	RW06