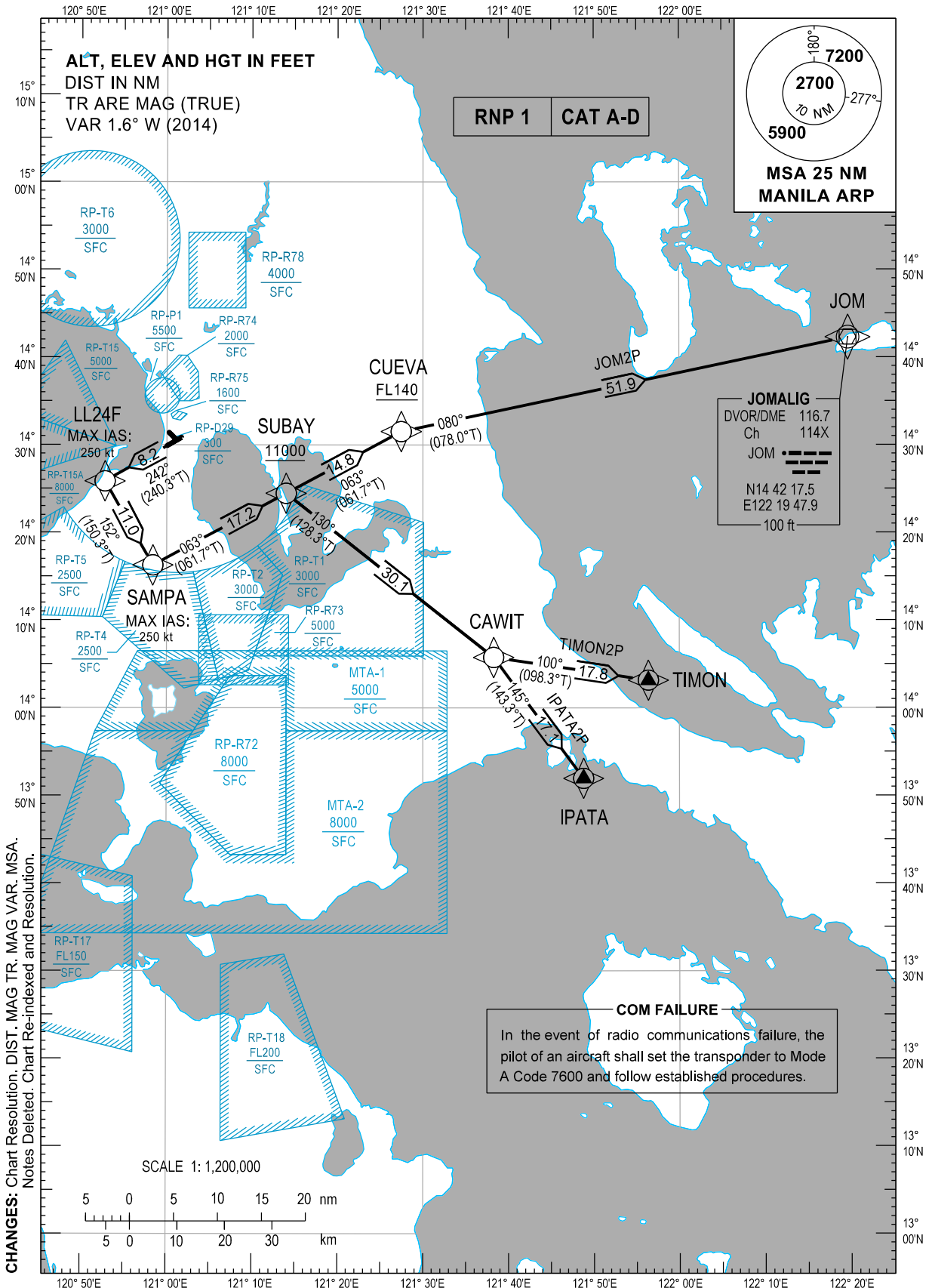


STANDARD DEPARTURE
CHART - INSTRUMENT
(SID)

TRANSITION
ALTITUDE
11,000 ft

GND - 121.8 / 122.0
TWR - 118.1 / 118.4
APP - 121.1 / 124.8

MANILA/Ninoy Aquino Intl (RPLL)
RNP SID RWY 24
IPATA2P JOM2P TIMON2P



DEPARTURE ROUTE DESCRIPTION

SID	TAKE-OFF	PROCEDURE	REMARKS
IPATA2P	RWY24	Climb on course 242°M to LL24F, to SAMPA, to SUBAY at or above 11000FT, to CAWIT, to IPATA.	1) ATS climb gradient of 5.0% required to cross SUBAY at or above 11000FT. 2) Maintain MAX IAS of 250KT up to and until turn is completed at SAMPA.
JOM2P		Climb on course 242°M to LL24F, to SAMPA, to SUBAY at or above 11000FT, to CUEVA at or above FL140, to JOM.	
TIMON2P		Climb on course 242°M to LL24F, to SAMPA, to SUBAY at or above 11000FT, to CAWIT, to TIMON.	

WAYPOINT LIST

Waypoint Name	Latitude	Longitude	Type
CAWIT	N14 05 45	E121 38 17	Fly-by
CUEVA	N14 31 31	E121 27 28	Fly-by
IPATA	N13 51 57	E121 48 48	Fly-by
JOM	N14 42 18	E122 19 48	Fly-by
LL24F	N14 25 51	E120 52 47	Fly-by
SAMPA	N14 16 16	E120 58 24	Fly-by
SUBAY	N14 24 28	E121 14 00	Fly-by
TIMON	N14 03 10	E121 56 23	Fly-by

PROPOSED CODING FOR DEPARTURE RNP SID RWY24

Table 1: IPATA2P

SEQ. NO.	PD	W/P ID	Flyover	Course Track °M (°T)	Magnetic Variation	Distance (NM)	TD	ALT (FT)	Speed (knots)	VPA (°)	Nav. Spec	Transition ID
10	CF	LL24F	N	242° (240.3°)	-	8.2	-	-	250	-	RNP1	RW24
20	TF	SAMPA	N	152° (150.3°)	-	11.0	-	-	250	-	RNP1	RW24
30	TF	SUBAY	N	063° (061.7°)	-	17.2	-	+11000	-	-	RNP1	RW24
40	TF	CAWIT	N	130° (128.3°)	-	30.1	-	-	-	-	RNP1	RW24
50	TF	IPATA	N	145° (143.3°)	-	17.1	-	-	-	-	RNP1	RW24

CHANGES: RTE Description. WPT List. Coding Table.

Table 2: JOM2P

SEQ. NO.	PD	W/P ID	Flyover	Course Track °M (°T)	Magnetic Variation	Distance (NM)	TD	ALT (FT)	Speed (knots)	VPA (°)	Nav. Spec	Transition ID
10	CF	LL24F	N	242° (240.3°)	-	8.2	-	-	250	-	RNP1	RW24
20	TF	SAMPA	N	152° (150.3°)	-	11.0	-	-	250	-	RNP1	RW24
30	TF	SUBAY	N	063° (061.7°)	-	17.2	-	+11000	-	-	RNP1	RW24
40	TF	CUEVA	N	063° (061.7°)	-	14.8	-	+FL140	-	-	RNP1	RW24
50	TF	JOM	N	080° (078.0°)	-	51.9	-	-	-	-	RNP1	RW24

Table 3: TIMON2P

SEQ. NO.	PD	W/P ID	Flyover	Course Track °M (°T)	Magnetic Variation	Distance (NM)	TD	ALT (FT)	Speed (knots)	VPA (°)	Nav. Spec	Transition ID
10	CF	LL24F	N	242° (240.3°)	-	8.2	-	-	250	-	RNP1	RW24
20	TF	SAMPA	N	152° (150.3°)	-	11.0	-	-	250	-	RNP1	RW24
30	TF	SUBAY	N	063° (061.7°)	-	17.2	-	+11000	-	-	RNP1	RW24
40	TF	CAWIT	N	130° (128.3°)	-	30.1	-	-	-	-	RNP1	RW24
50	TF	TIMON	N	100° (098.3°)	-	17.8	-	-	-	-	RNP1	RW24

CHANGE: Coding Table.