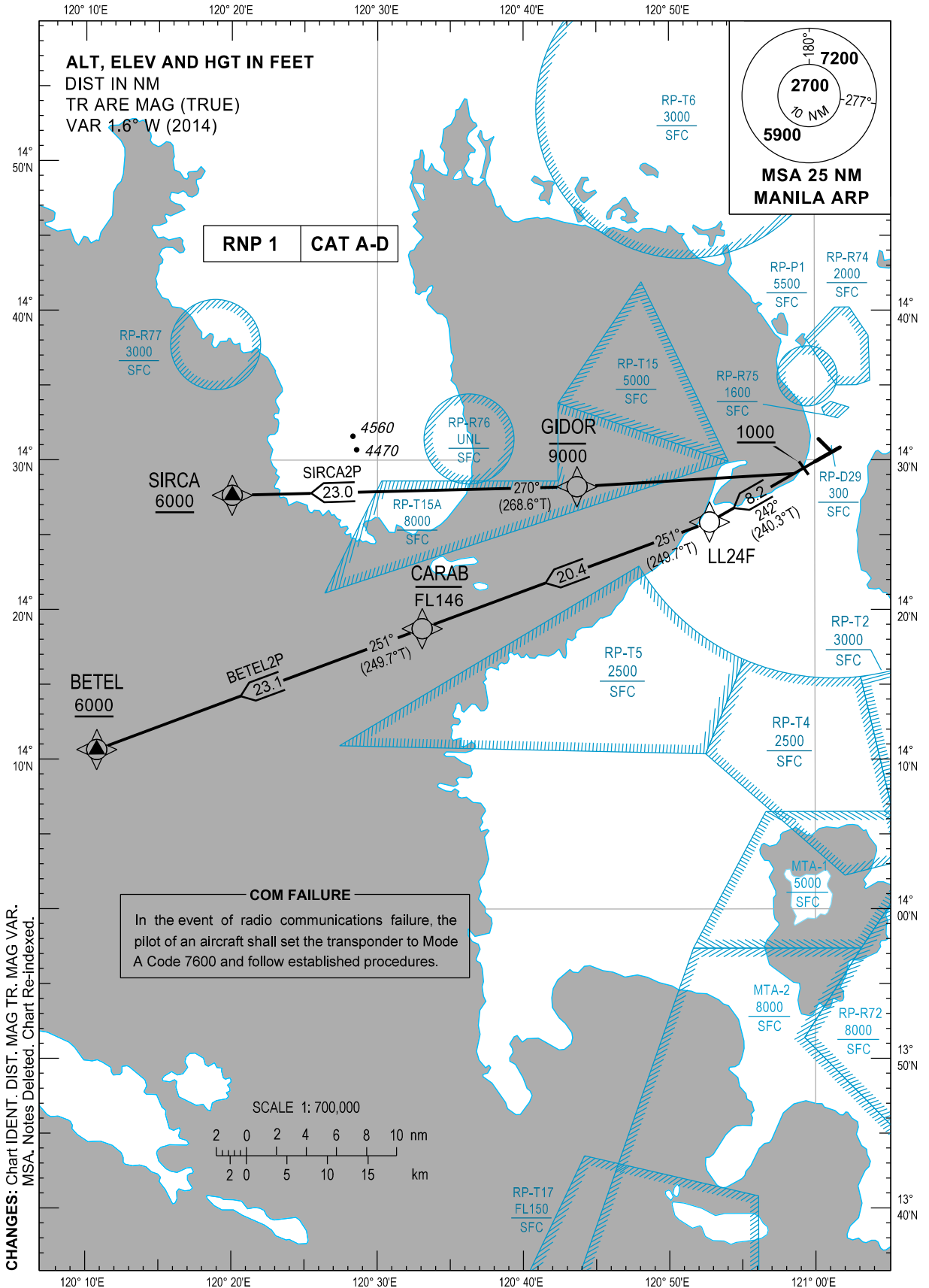


STANDARD DEPARTURE
CHART - INSTRUMENT
(SID)

TRANSITION
ALTITUDE
11,000 ft

GND - 121.8 / 122.0
TWR - 118.1 / 118.4
APP - 121.1 / 124.8

MANILA/Ninoy Aquino Intl (RPLL)
RNP SID RWY 24
BETEL2P SIRCA2P



DEPARTURE ROUTE DESCRIPTION

SID	TAKE-OFF	PROCEDURE	REMARKS
BETEL2P	RWY24	Climb on course 242°M to LL24F, to CARAB at or below FL146, to BETEL at or above 6000FT.	No turn before DER.
SIRCA2P		Climb on course 242°M, at or above 1000FT, turn right direct to GIDOR at or below 9000FT, to SIRCA at or above 6000FT.	

WAYPOINT LIST

Waypoint Name	Latitude	Longitude	Type
BETEL	N14 10 38	E120 10 46	Fly-by
CARAB	N14 18 44	E120 33 04	Fly-by
GIDOR	N14 28 13	E120 43 42	Fly-by
LL24F	N14 25 51	E120 52 47	Fly-by
SIRCA	N14 27 38	E120 20 02	Fly-by

PROPOSED CODING FOR DEPARTURE RNP SID RWY24

Table 1: BETEL2P

SEQ. NO.	PD	W/P ID	Flyover	Course Track °M (°T)	Magnetic Variation	Distance (NM)	TD	ALT (FT)	Speed (knots)	VPA (°)	Nav. Spec	Transition ID
10	CF	LL24F	N	242° (240.3°)	-	8.2	-	-	-	-	RNP1	RW24
20	TF	CARAB	N	251° (249.7°)	-	20.4	-	-FL146	-	-	RNP1	RW24
30	TF	BETEL	N	251° (249.7°)	-	23.1	-	+6000	-	-	RNP1	RW24

Table 2: SIRCA2P

SEQ. NO.	PD	W/P ID	Flyover	Course Track °M (°T)	Magnetic Variation	Distance (NM)	TD	ALT (FT)	Speed (knots)	VPA (°)	Nav. Spec	Transition ID
10	CA	-	-	242° (240.3°)	-	-	-	+1000	-	-	RNP1	RW24
20	DF	GIDOR	N	-	-	-	R	-9000	-	-	RNP1	RW24
30	TF	SIRCA	N	270° (268.6°)	-	23.0	-	+6000	-	-	RNP1	RW24

CHANGES: RTE Description. WPT List. Coding Table.