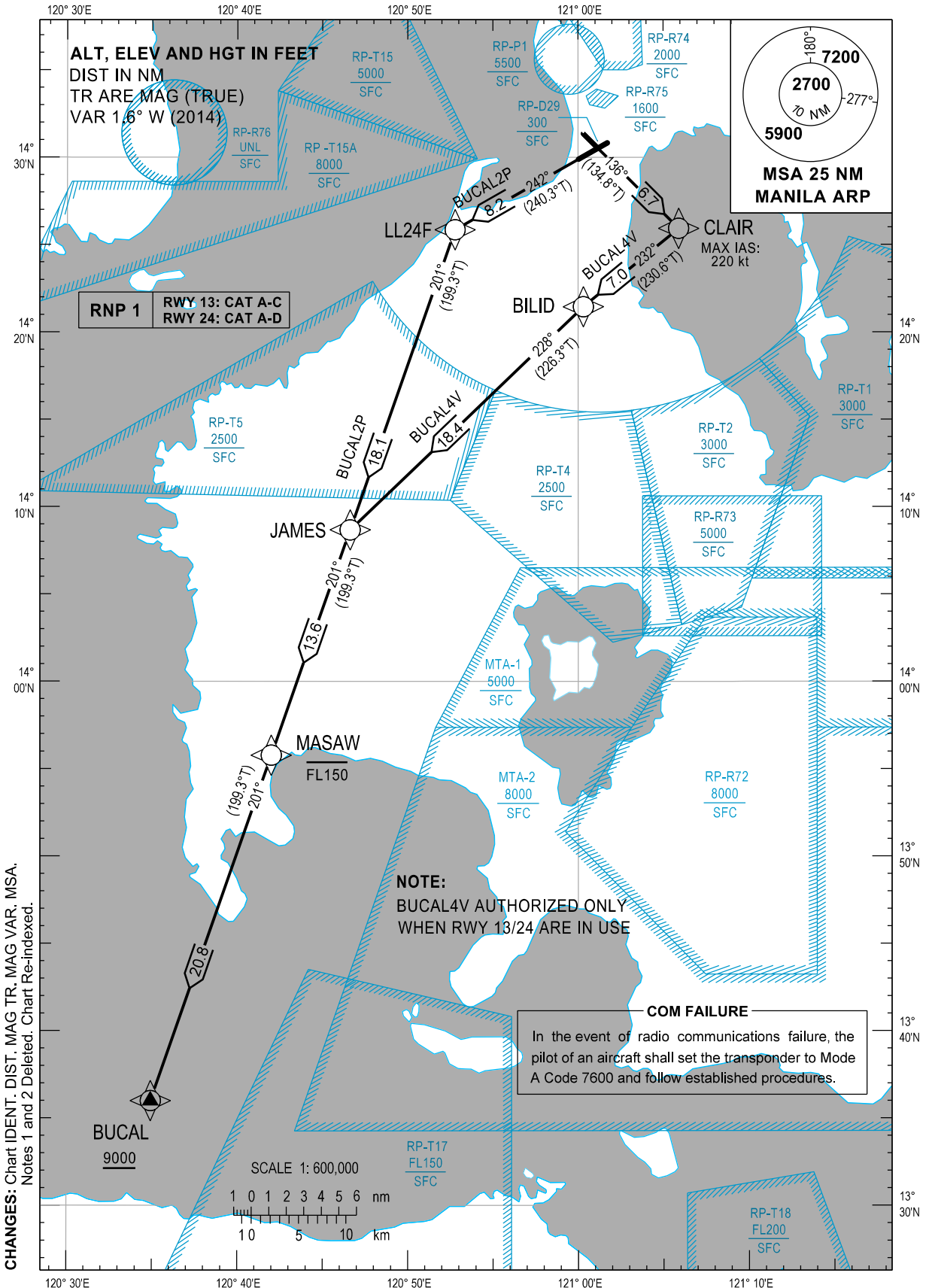


STANDARD DEPARTURE
CHART - INSTRUMENT
(SID)

TRANSITION
ALTITUDE
11,000 ft

GND - 121.8 / 122.0
TWR - 118.1 / 118.4
APP - 121.1 / 124.8

MANILA/Ninoy Aquino Intl (RPLL)
RNP SID RWY 13/24
BUCAL2P/4V



DEPARTURE ROUTE DESCRIPTION

SID	TAKE-OFF	PROCEDURE	REMARKS
BUCAL2P	RWY24	Climb on course 242°M to LL24F, to JAMES, to MASAW at or below FL150, to BUCAL at or above 9000FT.	4.1% climb gradient required up to 3500FT. This is due to airspace restrictions only.
BUCAL4V	RWY13	Climb on course 136°M to CLAIR, to BILID, to JAMES, to MASAW at or below FL150, to BUCAL at or above 9000FT.	Maintain MAX IAS of 220KT up to and until turn is completed at CLAIR.

WAYPOINT LIST

Waypoint Name	Latitude	Longitude	Type
BILID	N14 21 27	E121 00 19	Fly-by
BUCAL	N13 36 00	E120 34 56	Fly-by
CLAIR	N14 25 56	E121 05 55	Fly-by
JAMES	N14 08 40	E120 46 37	Fly-by
LL24F	N14 25 51	E120 52 47	Fly-by
MASAW	N13 55 46	E120 42 00	Fly-by

PROPOSED CODING FOR DEPARTURE RNP SID RWY13/24

Table 1: BUCAL2P

SEQ. NO.	PD	W/P ID	Flyover	Course Track °M (°T)	Magnetic Variation	Distance (NM)	TD	ALT (FT)	Speed (knots)	VPA (°)	Nav. Spec	Transition ID
10	CF	LL24F	N	242° (240.3°)	-	8.2	-	-	-	-	RNP1	RW24
20	TF	JAMES	N	201° (199.3°)	-	18.1	-	-	-	-	RNP1	RW24
30	TF	MASAW	N	201° (199.3°)	-	13.6	-	-FL150	-	-	RNP1	RW24
40	TF	BUCAL	N	201° (199.3°)	-	20.8	-	+9000	-	-	RNP1	RW24

Table 2: BUCAL4V

SEQ. NO.	PD	W/P ID	Flyover	Course Track °M (°T)	Magnetic Variation	Distance (NM)	TD	ALT (FT)	Speed (knots)	VPA (°)	Nav. Spec	Transition ID
10	CF	CLAIR	N	136° (134.8°)	-	6.7	-	-	220	-	RNP1	RW13
20	TF	BILID	N	232° (230.6°)	-	7.0	-	-	-	-	RNP1	RW13
30	TF	JAMES	N	228° (226.3°)	-	18.4	-	-	-	-	RNP1	RW13
40	TF	MASAW	N	201° (199.3°)	-	13.6	-	-FL150	-	-	RNP1	RW13
50	TF	BUCAL	N	201° (199.3°)	-	20.8	-	+9000	-	-	RNP1	RW13

CHANGES: RTE Description. WPT List. Coding Table.