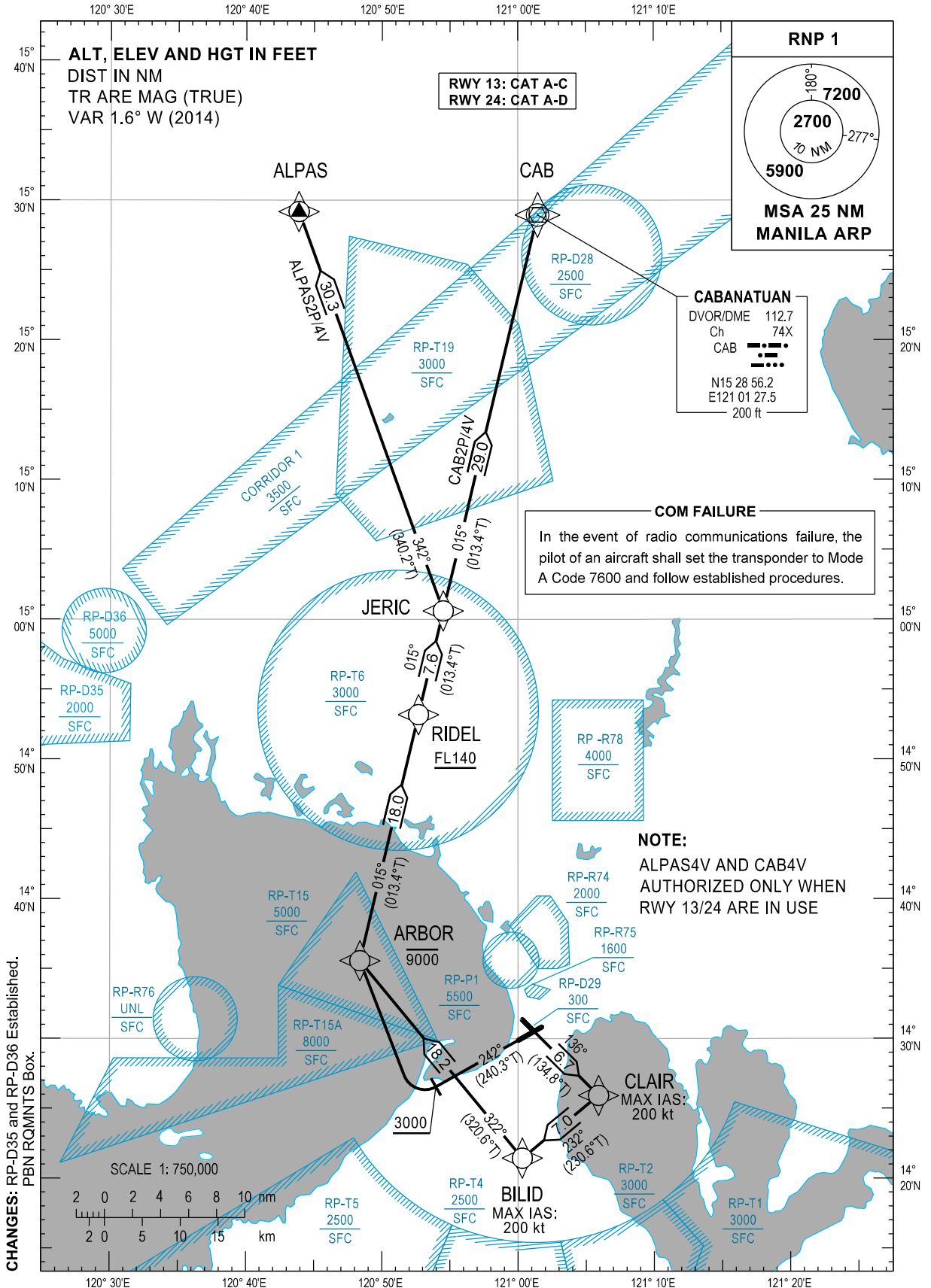


STANDARD DEPARTURE  
CHART - INSTRUMENT  
(SID)

TRANSITION  
ALTITUDE  
11,000 ft

GND - 121.8 / 122.0  
TWR - 118.1 / 118.4  
APP - 121.1 / 124.8

MANILA/Ninoy Aquino Intl (RPLL)  
RNP SID RWY 13/24  
ALPAS2P/4V CAB2P/4V



### DEPARTURE ROUTE DESCRIPTION

SID	TAKE-OFF	PROCEDURE	REMARKS
ALPAS2P	RWY24	Climb on course 242°M, at or above 3,000FT, turn right direct to ARBOR at or below 9000FT, to RIDEL at or above FL140, to JERIC, to ALPAS.	ATS climb gradient of 6.2% required to cross RIDEL at or above FL140.
ALPAS4V	RWY13	Climb on course 136°M to CLAIR, to BILID, to ARBOR at or below 9000FT, to RIDEL at or above FL140, to JERIC, to ALPAS.	1) ATS climb gradient of 4.6% required to cross RIDEL at or above FL140. 2) Maintain MAX IAS of 200KT up to and until turn is completed at BILID.
CAB2P	RWY24	Climb on course 242°M, at or above 3000FT, turn right direct to ARBOR at or below 9000FT, to RIDEL at or above FL140, to JERIC, to CAB.	ATS climb gradient of 6.2% required to cross RIDEL at or above FL140.
CAB4V	RWY13	Climb on course 136°M to CLAIR, to BILID, to ARBOR at or below 9000FT, to RIDEL at or above FL140, to JERIC, to CAB.	1) ATS climb gradient of 4.6% required to cross RIDEL at or above FL140. 2) Maintain MAX IAS of 200KT up to and until turn is completed at BILID.

### WAYPOINT LIST

Waypoint Name	Latitude	Longitude	Type
ALPAS	N15 29 11	E120 43 52	Fly-by
ARBOR	N14 35 34	E120 48 23	Fly-by
BILID	N14 21 27	E121 00 19	Fly-by
CAB	N15 28 56.2	E121 01 27.5	Fly-by
CLAIR	N14 25 56	E121 05 55	Fly-by
JERIC	N15 00 36	E120 54 30	Fly-by
RIDEL	N14 53 11	E120 52 41	Fly-by

### PROPOSED CODING FOR DEPARTURE RNP SID RWY13/24

Table 1: ALPAS2P

SEQ. NO.	PD	W/P ID	Flyover	Course Track °M (°T)	Magnetic Variation	Distance (NM)	TD	ALT (FT)	Speed (knots)	VPA (°)	Nav. Spec	Transition ID
10	CA	-	-	242° (240.3°)	-	-	-	+3000	-	-	RNP1	RW24
20	DF	ARBOR	N	-	-	-	R	-9000	-	-	RNP1	RW24
30	TF	RIDEL	N	015° (013.4°)	-	18.0	-	+FL140	-	-	RNP1	RW24
40	TF	JERIC	N	015° (013.4°)	-	7.6	-	-	-	-	RNP1	RW24
50	TF	ALPAS	N	342° (340.2°)	-	30.3	-	-	-	-	RNP1	RW24