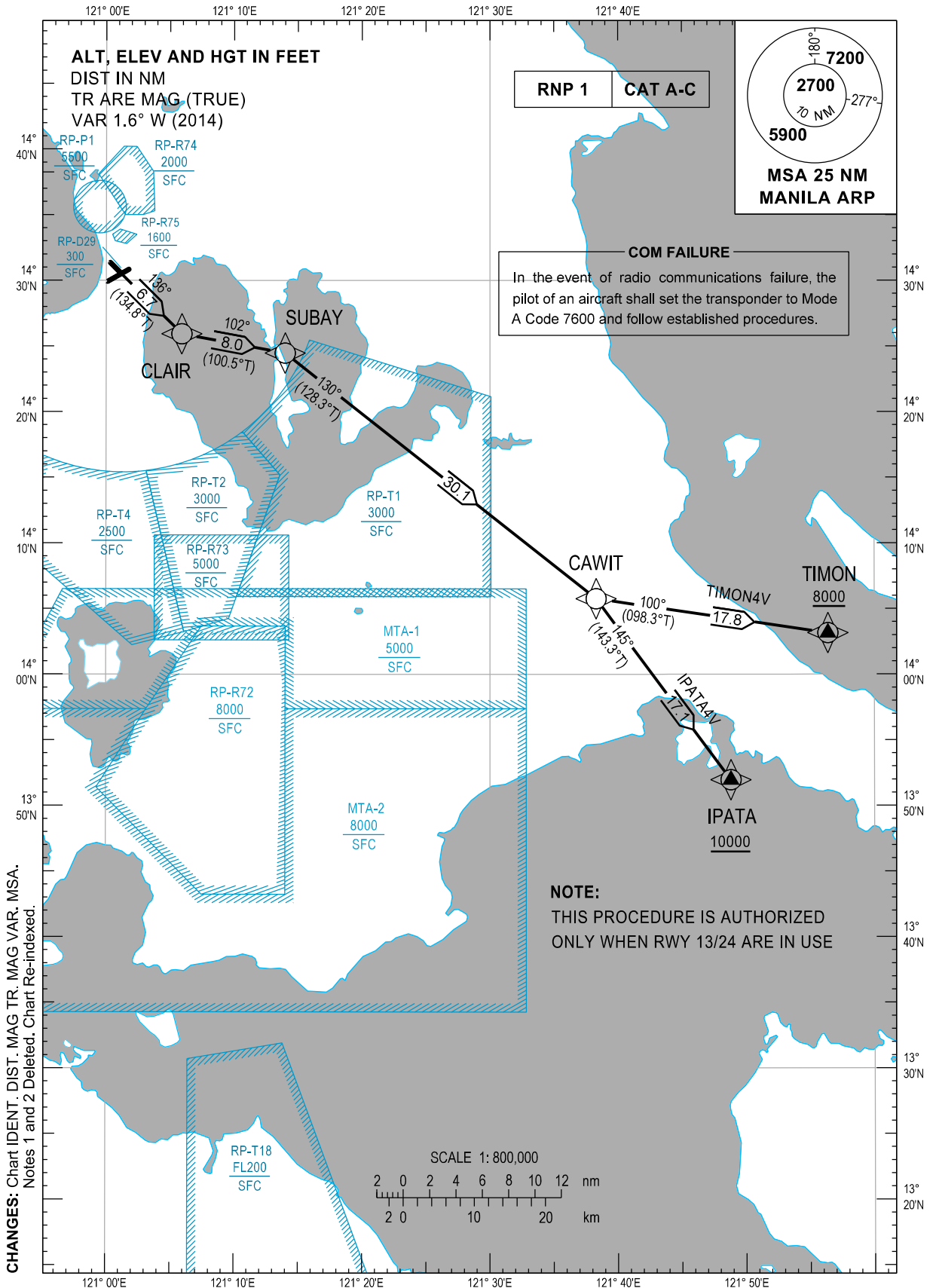


STANDARD DEPARTURE
CHART - INSTRUMENT
(SID)

TRANSITION
ALTITUDE
11,000 ft

GND - 121.8 / 122.0
TWR - 118.1 / 118.4
APP - 121.1 / 124.8

MANILA/Ninoy Aquino Intl (RPLL)
RNP SID RWY 13
IPATA4V TIMON4V



DEPARTURE ROUTE DESCRIPTION

SID	TAKE-OFF	PROCEDURE	REMARKS
IPATA4V	RWY13	Climb on course 136°M to CLAIR, to SUBAY, to CAWIT, to IPATA at or above 10000FT.	
TIMON4V		Climb on course 136°M to CLAIR, to SUBAY, to CAWIT, to TIMON at or above 8000FT.	

WAYPOINT LIST

Waypoint Name	Latitude	Longitude	Type
CAWIT	N14 05 45	E121 38 17	Fly-by
CLAIR	N14 25 56	E121 05 55	Fly-by
IPATA	N13 51 57	E121 48 48	Fly-by
SUBAY	N14 24 28	E121 14 00	Fly-by
TIMON	N14 03 10	E121 56 23	Fly-by

PROPOSED CODING FOR DEPARTURE RNP SID RWY13

Table 1: IPATA4V

SEQ. NO.	PD	W/P ID	Flyover	Course Track °M (°T)	Magnetic Variation	Distance (NM)	TD	ALT (FT)	Speed (knots)	VPA (°)	Nav. Spec	Transition ID
10	CF	CLAIR	N	136° (134.8°)	-	6.7	-	-	-	-	RNP1	RW13
20	TF	SUBAY	N	102° (100.5°)	-	8.0	-	-	-	-	RNP1	RW13
30	TF	CAWIT	N	130° (128.3°)	-	30.1	-	-	-	-	RNP1	RW13
40	TF	IPATA	N	145° (143.3°)	-	17.1	-	+10000	-	-	RNP1	RW13

Table 2: TIMON4V

SEQ. NO.	PD	W/P ID	Flyover	Course Track °M (°T)	Magnetic Variation	Distance (NM)	TD	ALT (FT)	Speed (knots)	VPA (°)	Nav. Spec	Transition ID
10	CF	CLAIR	N	136° (134.8°)	-	6.7	-	-	-	-	RNP1	RW13
20	TF	SUBAY	N	102° (100.5°)	-	8.0	-	-	-	-	RNP1	RW13
30	TF	CAWIT	N	130° (128.3°)	-	30.1	-	-	-	-	RNP1	RW13
40	TF	TIMON	N	100° (098.3°)	-	17.8	-	+8000	-	-	RNP1	RW13

CHANGES: RTE Description. WPT List. Coding Table.