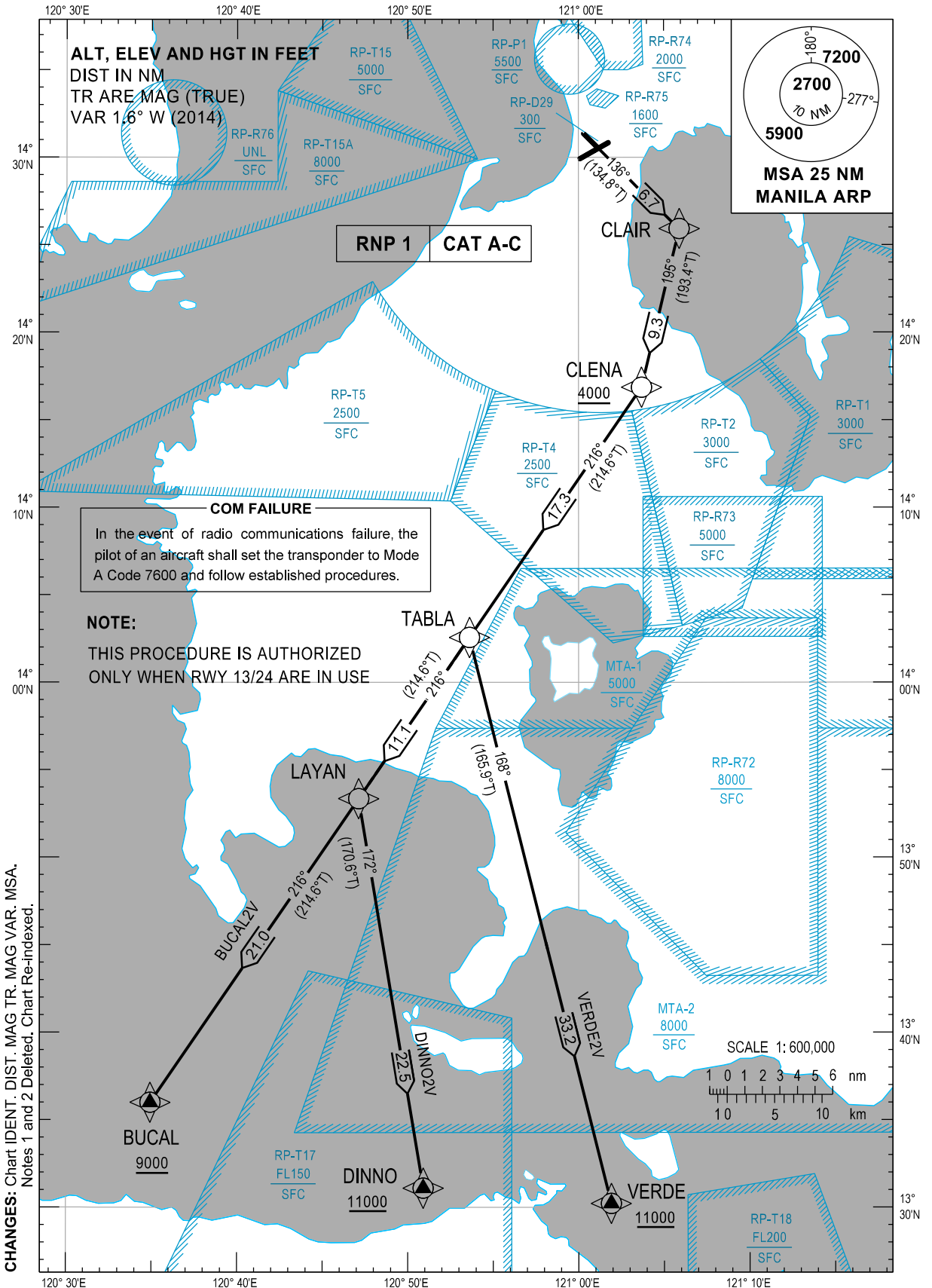


STANDARD DEPARTURE  
CHART - INSTRUMENT  
(SID) - ICAO

TRANSITION  
ALTITUDE  
11,000 ft

GND - 121.8 / 122.0  
TWR - 118.1 / 118.4  
APP - 121.1 / 124.8

MANILA/Ninoy Aquino Intl (RPLL)  
RNP SID RWY 13  
BUCAL2V DINNO2V VERDE2V



**DEPARTURE ROUTE DESCRIPTION**

SID	TAKE-OFF	PROCEDURE	REMARKS
BUCAL2V	RWY13	Climb on course 136°M to CLAIR, to CLENA at or above 4000FT, to TABLA, to LAYAN, to BUCAL at or above 9000FT.	4.2% climb gradient required to cross CLENA at or above 4000FT. This is due to airspace restrictions only.
DINNO2V		Climb on course 136°M to CLAIR, to CLENA at or above 4000FT, to TABLA, to LAYAN, to DINNO at or above 11000FT.	
VERDE2V		Climb on course 136°M to CLAIR, to CLENA at or above 4000FT, to TABLA, to VERDE at or above 11000FT.	

**WAYPOINT LIST**

Waypoint Name	Latitude	Longitude	Type
BUCAL	N13 36 00	E120 34 56	Fly-by
CLAIR	N14 25 56	E121 05 55	Fly-by
CLENA	N14 16 52	E121 03 42	Fly-by
DINNO	N13 31 06	E120 50 54	Fly-by
LAYAN	N13 53 21	E120 47 08	Fly-by
TABLA	N14 02 34	E120 53 37	Fly-by
VERDE	N13 30 13	E121 01 54	Fly-by

**PROPOSED CODING FOR DEPARTURE RNP SID RWY13**

**Table 1: BUCAL2V**

SEQ. NO.	PD	W/P ID	Flyover	Course Track °M (°T)	Magnetic Variation	Distance (NM)	TD	ALT (FT)	Speed (knots)	VPA (°)	Nav. Spec	Transition ID
10	CF	CLAIR	N	136° (134.8°)	-	6.7	-	-	-	-	RNP1	RW13
20	TF	CLENA	N	195° (193.4°)	-	9.3	-	+4000	-	-	RNP1	RW13
30	TF	TABLA	N	216° (214.6°)	-	17.3	-	-	-	-	RNP1	RW13
40	TF	LAYAN	N	216° (214.6°)	-	11.1	-	-	-	-	RNP1	RW13
50	TF	BUCAL	N	216° (214.6°)	-	21.0	-	+9000	-	-	RNP1	RW13

**Table 2: DINNO2V**

SEQ. NO.	PD	W/P ID	Flyover	Course Track °M (°T)	Magnetic Variation	Distance (NM)	TD	ALT (FT)	Speed (knots)	VPA (°)	Nav. Spec	Transition ID
10	CF	CLAIR	N	136° (134.8°)	-	6.7	-	-	-	-	RNP1	RW13
20	TF	CLENA	N	195° (193.4°)	-	9.3	-	+4000	-	-	RNP1	RW13
30	TF	TABLA	N	216° (214.6°)	-	17.3	-	-	-	-	RNP1	RW13
40	TF	LAYAN	N	216° (214.6°)	-	11.1	-	-	-	-	RNP1	RW13
50	TF	DINNO	N	172° (170.6°)	-	22.5	-	+11000	-	-	RNP1	RW13

CHANGES: RTE Description. WPT List. Coding Table.

**Table 3: VERDE2V**

SEQ. NO.	PD	W/P ID	Flyover	Course Track °M (°T)	Magnetic Variation	Distance (NM)	TD	ALT (FT)	Speed (knots)	VPA (°)	Nav. Spec	Transition ID
10	CF	CLAIR	N	136° (134.8°)	-	6.7	-	-	-	-	RNP1	RW13
20	TF	CLENA	N	195° (193.4°)	-	9.3	-	+4000	-	-	RNP1	RW13
30	TF	TABLA	N	216° (214.6°)	-	17.3	-	-	-	-	RNP1	RW13
40	TF	VERDE	N	168° (165.9°)	-	33.2	-	+11000	-	-	RNP1	RW13

CHANGE: Coding Table.