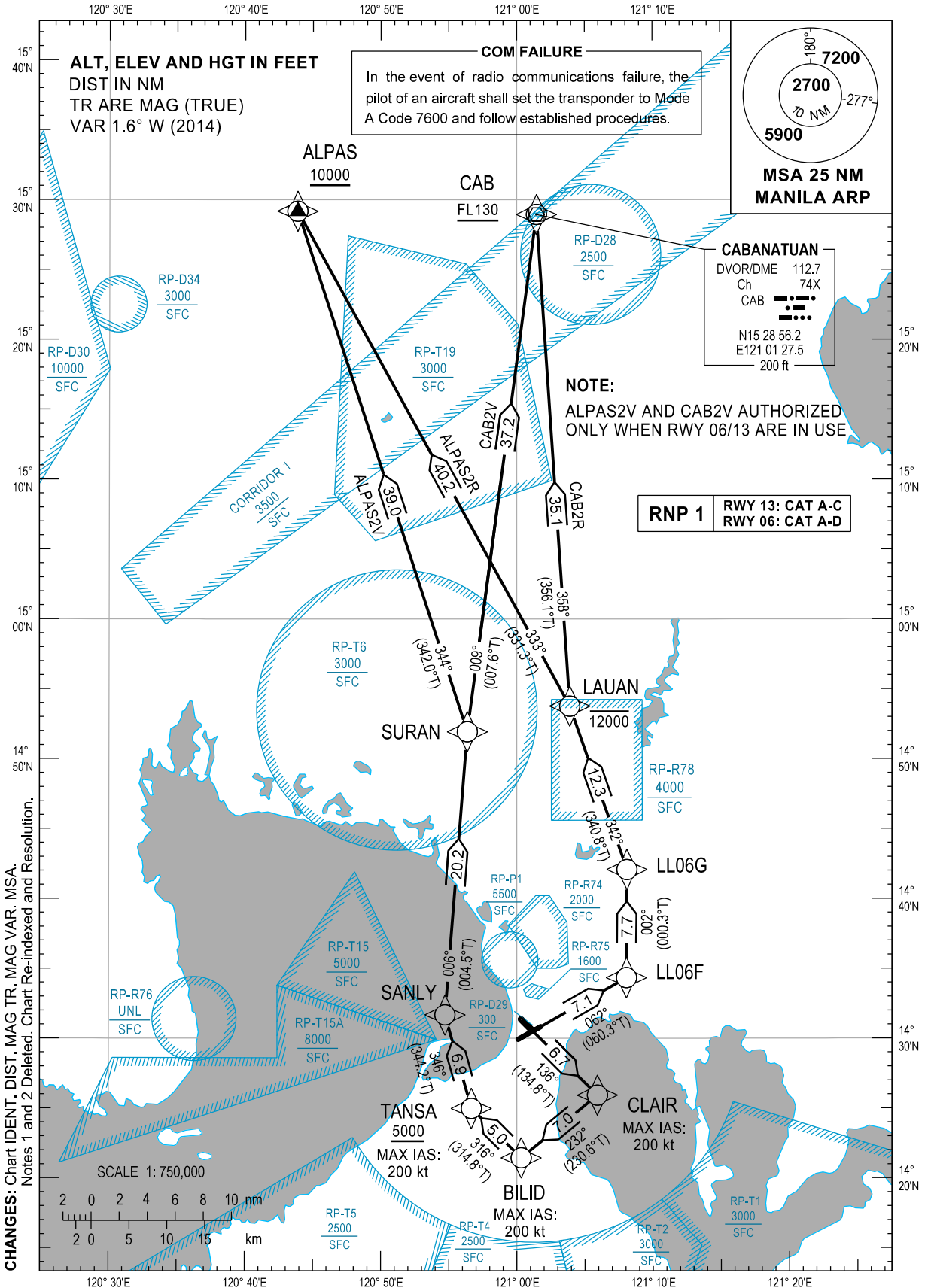


STANDARD DEPARTURE
CHART - INSTRUMENT
(SID)

TRANSITION
ALTITUDE
11,000 ft

GND - 121.8 / 122.0
TWR - 118.1 / 118.4
APP - 121.1 / 124.8

MANILA/Ninoy Aquino Intl (RPLL)
RNP SID RWY 06/13
ALPAS2R/2V CAB2R/2V



DEPARTURE ROUTE DESCRIPTION

SID	TAKE-OFF	PROCEDURE	REMARKS
ALPAS2R	RWY06	Climb on course 062°M to LL06F, to LL06G, to LAUAN at or below 12000FT, to ALPAS at or above 10000FT.	
ALPAS2V	RWY13	Climb on course 136°M to CLAIR, to BILID, to TANSANSA at or above 5000FT, to SANLY, to SURAN, to ALPAS at or above 10000FT.	1) ATS climb gradient of 4.4% required to cross TANSANSA at or above 5000FT. 2) Maintain MAX IAS of 200KT up to and until turn is completed at TANSANSA.
CAB2R	RWY06	Climb on course 062°M to LL06F, to LL06G, to LAUAN at or below 12000FT, to CAB at or above FL130.	
CAB2V	RWY13	Climb on course 136°M to CLAIR, to BILID, to TANSANSA at or above 5000FT, to SANLY, to SURAN, to CAB at or above FL130.	1) ATS climb gradient of 4.4% required to cross TANSANSA at or above 5000FT. 2) Maintain MAX IAS of 200KT up to and until turn is completed at TANSANSA.

WAYPOINT LIST

Waypoint Name	Latitude	Longitude	Type
ALPAS	N15 29 11	E120 43 52	Fly-by
BILID	N14 21 27	E121 00 19	Fly-by
CAB	N15 28 56	E121 01 27	Fly-by
CLAIR	N14 25 56	E121 05 55	Fly-by
LAUAN	N14 53 46	E121 03 54	Fly-by
LL06F	N14 34 20	E121 08 03	Fly-by
LL06G	N14 42 04	E121 08 06	Fly-by
SANLY	N14 31 40	E120 54 43	Fly-by
SURAN	N14 51 56	E120 56 22	Fly-by
TANSANSA	N14 24 59	E120 56 40	Fly-by

PROPOSED CODING FOR DEPARTURE RNP SID RWY06/13

Table 1: ALPAS2R

SEQ. NO.	PD	W/P ID	Flyover	Course Track °M (°T)	Magnetic Variation	Distance (NM)	TD	ALT (FT)	Speed (knots)	VPA (°)	Nav. Spec	Transition ID
10	CF	LL06F	N	062° (060.3°)	-	7.1	-	-	-	-	RNP1	RW06
20	TF	LL06G	N	002° (000.3°)	-	7.7	-	-	-	-	RNP1	RW06
30	TF	LAUAN	N	342° (340.8°)	-	12.3	-	-12000	-	-	RNP1	RW06
40	TF	ALPAS	N	333° (331.3°)	-	40.2	-	+10000	-	-	RNP1	RW06

CHANGES: RTE Description. WPT List. Coding Table.

Table 2: ALPAS2V

SEQ. NO.	PD	W/P ID	Flyover	Course Track °M (°T)	Magnetic Variation	Distance (NM)	TD	ALT (FT)	Speed (knots)	VPA (°)	Nav. Spec	Transition ID
10	CF	CLAIR	N	136° (134.8°)	-	6.7	-	-	200	-	RNP1	RW13
20	TF	BILID	N	232° (230.6°)	-	7.0	-	-	200	-	RNP1	RW13
30	TF	TANSA	N	316° (314.8)	-	5.0	-	+5000	200	-	RNP1	RW13
40	TF	SANLY	N	346° (344.2°)	-	6.9	-	-	-	-	RNP1	RW13
50	TF	SURAN	N	006° (004.5°)	-	20.2	-	-	-	-	RNP1	RW13
60	TF	ALPAS	N	344° (342.0°)	-	39.0	-	+10000	-	-	RNP1	RW13

Table 3: CAB2R

SEQ. NO.	PD	W/P ID	Flyover	Course Track °M (°T)	Magnetic Variation	Distance (NM)	TD	ALT (FT)	Speed (knots)	VPA (°)	Nav. Spec	Transition ID
10	CF	LL06F	N	062° (060.3°)	-	7.1	-	-	-	-	RNP1	RW06
20	TF	LL06G	N	002° (000.3°)	-	7.7	-	-	-	-	RNP1	RW06
30	TF	LAUAN	N	342° (340.8°)	-	12.3	-	-12000	-	-	RNP1	RW06
40	TF	CAB	N	358° (356.1°)	-	35.1	-	+FL130	-	-	RNP1	RW06

Table 4: CAB2V

SEQ. NO.	PD	W/P ID	Flyover	Course Track °M (°T)	Magnetic Variation	Distance (NM)	TD	ALT (FT)	Speed (knots)	VPA (°)	Nav. Spec	Transition ID
10	CF	CLAIR	N	136° (134.8°)	-	6.7	-	-	200	-	RNP1	RW13
20	TF	BILID	N	232° (230.6°)	-	7.0	-	-	200	-	RNP1	RW13
30	TF	TANSA	N	316° (314.8)	-	5.0	-	+5000	200	-	RNP1	RW13
40	TF	SANLY	N	346° (344.2°)	-	6.9	-	-	-	-	RNP1	RW13
50	TF	SURAN	N	006° (004.5°)	-	20.2	-	-	-	-	RNP1	RW13
60	TF	CAB	N	009° (007.6°)	-	37.2	-	+FL130	-	-	RNP1	RW13

CHANGE: Coding Table.