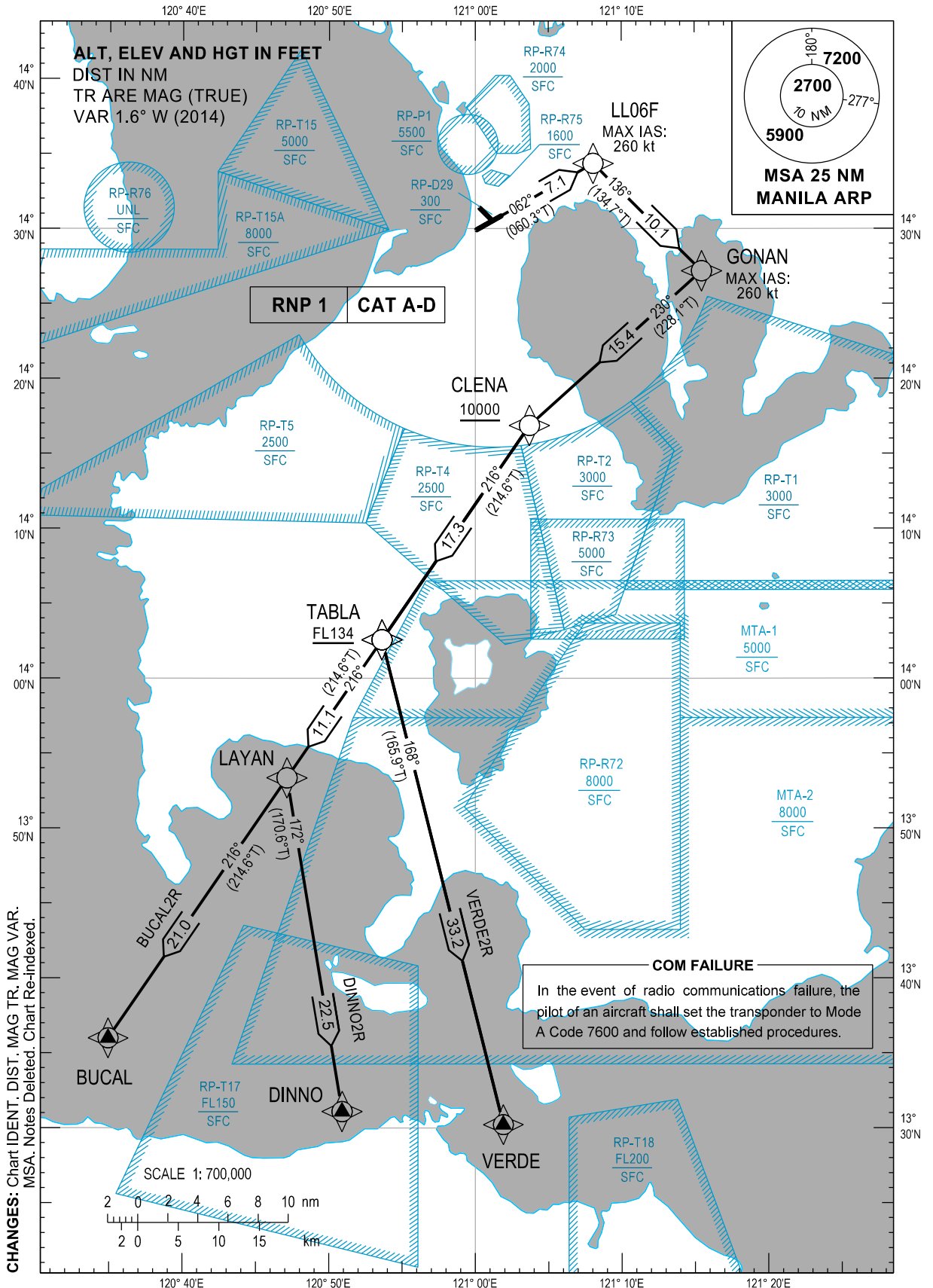


STANDARD DEPARTURE  
CHART - INSTRUMENT  
(SID)

TRANSITION  
ALTITUDE  
11,000 ft

GND - 121.8 / 122.0  
TWR - 118.1 / 118.4  
APP - 121.1 / 124.8

MANILA/Ninoy Aquino Intl (RPLL)  
RNP SID RWY 06  
BUCAL2R DINNO2R VERDE2R



**DEPARTURE ROUTE DESCRIPTION**

| SID     | TAKE-OFF | PROCEDURE   | REMARKS  |
|---------|----------|---|--|
| BUCAL2R | RWY06    | Climb on course 062°M to LL06F, to GONAN, to CLENA at or above 10000FT, to TABLA at or above FL134, to LAYAN, to BUCAL. | 1) ATS climb gradient of 5.0% required to cross CLENA at or above 10000FT.<br>2) Maintain MAX IAS of 260KT up to and until turn is completed at GONAN. |
| DINNO2R |          | Climb on course 062°M to LL06F, to GONAN, to CLENA at or above 10000FT, to TABLA at or above FL134, to LAYAN, to DINNO. |  |
| VERDE2R |          | Climb on course 062°M to LL06F, to GONAN, to CLENA at or above 10000FT, to TABLA at or above FL134, to VERDE.           |  |

**WAYPOINT LIST**

| Waypoint Name | Latitude  | Longitude  | Type   |
|---------------|-----------|------------|--------|
| BUCAL         | N13 36 00 | E120 34 56 | Fly-by |
| CLENA         | N14 16 52 | E121 03 42 | Fly-by |
| DINNO         | N13 31 06 | E120 50 54 | Fly-by |
| GONAN         | N14 27 10 | E121 15 29 | Fly-by |
| LAYAN         | N13 53 21 | E120 47 08 | Fly-by |
| LL06F         | N14 34 20 | E121 08 03 | Fly-by |
| TABLA         | N14 02 34 | E120 53 37 | Fly-by |
| VERDE         | N13 30 13 | E121 01 54 | Fly-by |

CHANGES: RTE Description. WPT List.

**PROPOSED CODING FOR DEPARTURE RNP SID RWY06**

**Table 1: BUCAL2R**

| SEQ. NO. | PD | W/P ID | Flyover | Course Track °M (°T) | Magnetic Variation | Distance (NM) | TD | ALT (FT) | Speed (knots) | VPA (°) | Nav. Spec | Transition ID |
|----------|----|--------|---------|----------------------|--------------------|---------------|----|----------|---------------|---------|-----------|---------------|
| 10       | CF | LL06F  | N       | 062° (060.3°)        | -                  | 7.1           | -  | -        | 260           | -       | RNP1      | RW06          |
| 20       | TF | GONAN  | N       | 136° (134.7°)        | -                  | 10.1          | -  | -        | 260           | -       | RNP1      | RW06          |
| 30       | TF | CLENA  | N       | 230° (228.1°)        | -                  | 15.4          | -  | +10000   | -             | -       | RNP1      | RW06          |
| 40       | TF | TABLA  | N       | 216° (214.6°)        | -                  | 17.3          | -  | +FL134   | -             | -       | RNP1      | RW06          |
| 50       | TF | LAYAN  | N       | 216° (214.6°)        | -                  | 11.1          | -  | -        | -             | -       | RNP1      | RW06          |
| 60       | TF | BUCAL  | N       | 216° (214.6°)        | -                  | 21.0          | -  | -        | -             | -       | RNP1      | RW06          |

**Table 2: DINNO2R**

| SEQ. NO. | PD | W/P ID | Flyover | Course Track °M (°T) | Magnetic Variation | Distance (NM) | TD | ALT (FT) | Speed (knots) | VPA (°) | Nav. Spec | Transition ID |
|----------|----|--------|---------|----------------------|--------------------|---------------|----|----------|---------------|---------|-----------|---------------|
| 10       | CF | LL06F  | N       | 062° (060.3°)        | -                  | 7.1           | -  | -        | 260           | -       | RNP1      | RW06          |
| 20       | TF | GONAN  | N       | 136° (134.7°)        | -                  | 10.1          | -  | -        | 260           | -       | RNP1      | RW06          |
| 30       | TF | CLENA  | N       | 230° (228.1°)        | -                  | 15.4          | -  | +10000   | -             | -       | RNP1      | RW06          |
| 40       | TF | TABLA  | N       | 216° (214.6°)        | -                  | 17.3          | -  | +FL134   | -             | -       | RNP1      | RW06          |
| 50       | TF | LAYAN  | N       | 216° (214.6°)        | -                  | 11.1          | -  | -        | -             | -       | RNP1      | RW06          |
| 60       | TF | DINNO  | N       | 172° (170.6°)        | -                  | 22.5          | -  | -        | -             | -       | RNP1      | RW06          |

**Table 3: VERDE2R**

| SEQ. NO. | PD | W/P ID | Flyover | Course Track °M (°T) | Magnetic Variation | Distance (NM) | TD | ALT (FT) | Speed (knots) | VPA (°) | Nav. Spec | Transition ID |
|----------|----|--------|---------|----------------------|--------------------|---------------|----|----------|---------------|---------|-----------|---------------|
| 10       | CF | LL06F  | N       | 062° (060.3°)        | -                  | 7.1           | -  | -        | 260           | -       | RNP1      | RW06          |
| 20       | TF | GONAN  | N       | 136° (134.7°)        | -                  | 10.1          | -  | -        | 260           | -       | RNP1      | RW06          |
| 30       | TF | CLENA  | N       | 230° (228.1°)        | -                  | 15.4          | -  | +10000   | -             | -       | RNP1      | RW06          |
| 40       | TF | TABLA  | N       | 216° (214.6°)        | -                  | 17.3          | -  | +FL134   | -             | -       | RNP1      | RW06          |
| 50       | TF | VERDE  | N       | 168° (165.9°)        | -                  | 33.2          | -  | -        | -             | -       | RNP1      | RW06          |

**CHANGE:** Coding Table.