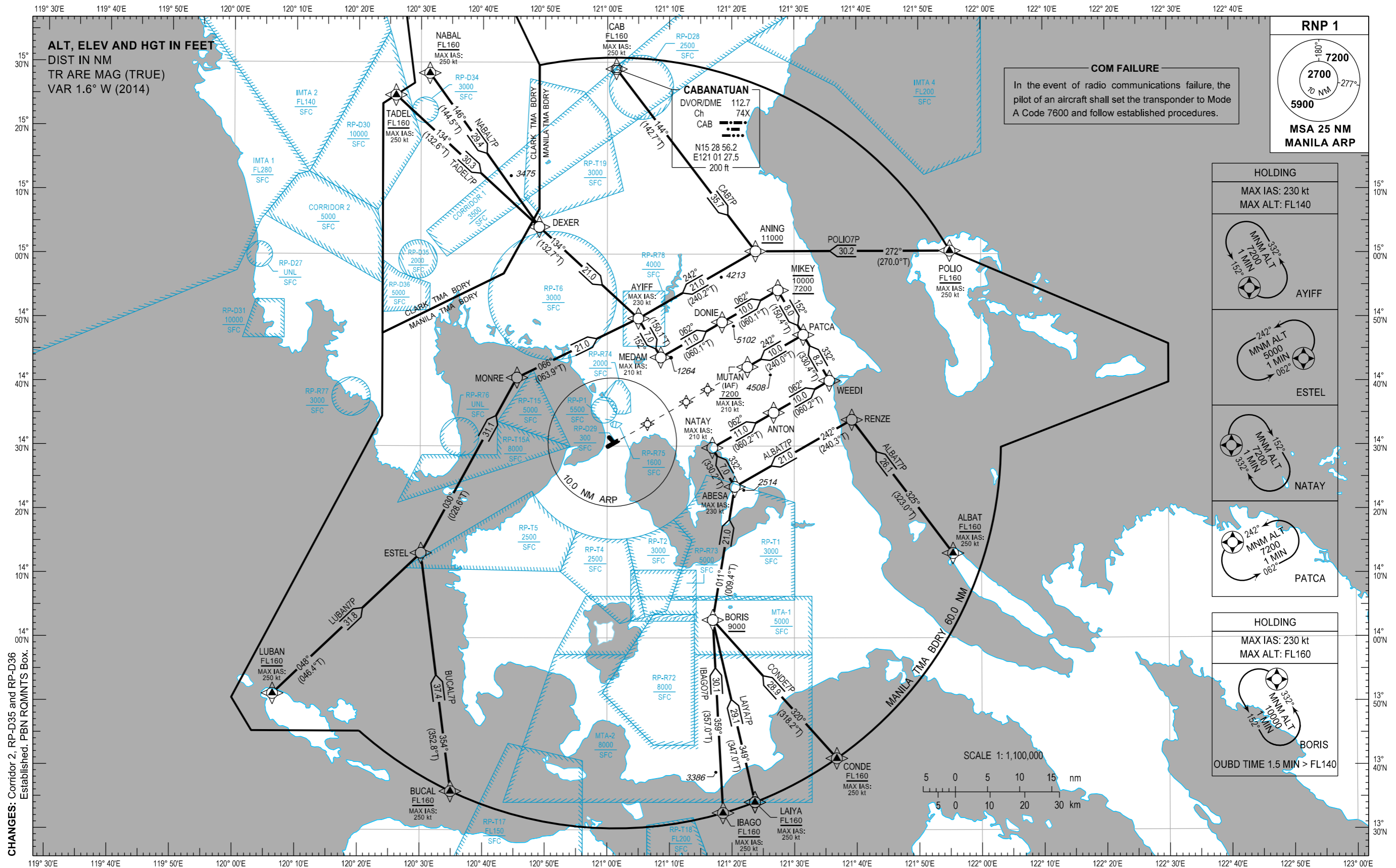


STANDARD ARRIVAL  
CHART - INSTRUMENT  
(STAR)

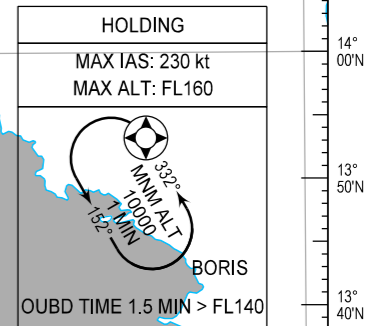
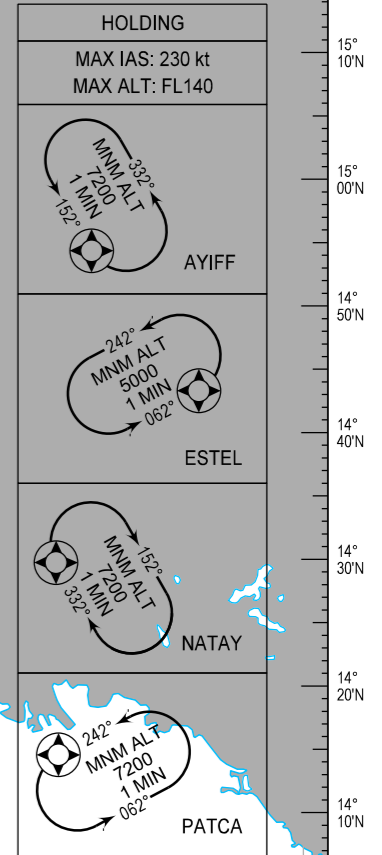
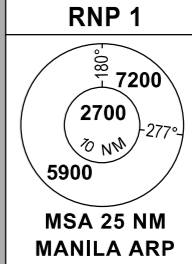
MANILA/Ninoy Aquino Intl (RPLL)  
RNP STAR RWY 24  
ALBAT7P BUCAL7P CAB7P CONDE7P IBAGO7P  
LAIYA7P LUBAN7P NABAL7P POLIO7P TADEL7P

TRANSITION  
ALTITUDE  
11,000 ft

APP - 121.1 / 124.8  
TWR - 118.1 / 118.4  
GND - 121.8 / 122.0



**COM FAILURE**  
In the event of radio communications failure, the pilot of an aircraft shall set the transponder to Mode A Code 7600 and follow established procedures.



CHANGES: Corridor 2, RP-D35 and RP-D36 Established, PBN ROWMNTS Box.

**ARRIVAL ROUTE DESCRIPTION**

STAR	ROUTE	PROCEDURE	REMARKS
ALBAT7P	ALBAT - RENZE - ABESA - NATAY - ANTON - WEEDI - PATCA - MUTAN	From ALBAT at or above FL160, to RENZE, to ABESA, to NATAY, to ANTON, to WEEDI, to PATCA, to MUTAN at or above 7200FT.	
BUCAL7P	BUCAL - ESTEL - MONRE - AYIFF - MEDAM - DONIE - MIKEY - PATCA - MUTAN	From BUCAL at or above FL160, to ESTEL, to MONRE, to AYIFF, to MEDAM, to DONIE, to MIKEY between 7200FT and 10000FT, to PATCA, to MUTAN at or above 7200FT.	
CAB7P	CAB - ANING - AYIFF - MEDAM - DONIE - MIKEY - PATCA - MUTAN	From CAB at or above FL160, to ANING at or above 11000FT, to AYIFF, to MEDAM, to DONIE, to MIKEY between 7200FT and 10000FT, to PATCA, to MUTAN at or above 7200FT.	
CONDE7P	CONDE - BORIS - ABESA - NATAY - ANTON - WEEDI - PATCA - MUTAN	From CONDE at or above FL160, to BORIS at or above 9000FT, to ABESA, to NATAY, to ANTON, to WEEDI, to PATCA, to MUTAN at or above 7200FT.	
IBAGO7P	IBAGO - BORIS - ABESA - NATAY - ANTON - WEEDI - PATCA - MUTAN	From IBAGO at or above FL160, to BORIS at or above 9000FT, to ABESA, to NATAY, to ANTON, to WEEDI, to PATCA, to MUTAN at or above 7200FT.	
LAIYA7P	LAIYA - BORIS - ABESA - NATAY - ANTON - WEEDI - PATCA - MUTAN	From LAIYA at or above FL160, to BORIS at or above 9000FT, to ABESA, to NATAY, to ANTON, to WEEDI, to PATCA, to MUTAN at or above 7200FT.	
LUBAN7P	LUBAN - ESTEL - MONRE - AYIFF - MEDAM - DONIE - MIKEY - PATCA - MUTAN	From LUBAN at or above FL160, to ESTEL, to MONRE, to AYIFF, to MEDAM, to DONIE, to MIKEY between 7200FT and 10000FT, to PATCA, to MUTAN at or above 7200FT.	
NABAL7P	NABAL - DEXER - AYIFF - MEDAM - DONIE - MIKEY - PATCA - MUTAN	From NABAL at or above FL160, to DEXER, to AYIFF, to MEDAM, to DONIE, to MIKEY between 7200FT and 10000FT, to PATCA, to MUTAN at or above 7200FT.	
POLIO7P	POLIO - ANING - AYIFF - MEDAM - DONIE - MIKEY - PATCA - MUTAN	From POLIO at or above FL160, to ANING at or above 11000FT, to AYIFF, to MEDAM, to DONIE, to MIKEY between 7200FT and 10000FT, to PATCA, to MUTAN at or above 7200FT.	
TADEL7P	TADEL - DEXER - AYIFF - MEDAM - DONIE - MIKEY - PATCA - MUTAN	From TADEL at or above FL160, to DEXER, to AYIFF, to MEDAM, to DONIE, to MIKEY between 7200FT and 10000FT, to PATCA, to MUTAN at or above 7200FT.	

**WAYPOINT LIST**

Waypoint Name	Latitude	Longitude	Type
ABESA	N14 23 37	E121 20 27	Fly-by
ALBAT	N14 13 13	E121 55 27	Fly-by
ANING	N15 00 27	E121 23 48	Fly-by
ANTON	N14 35 13	E121 26 42	Fly-by
AYIFF	N14 49 57	E121 04 59	Fly-by
BORIS	N14 02 49	E121 16 56	Fly-by
BUCAL	N13 36 00	E120 34 56	Fly-by
CAB	N15 28 56.2	E121 01 27.5	Fly-by
CONDE	N13 41 09	E121 36 46	Fly-by
DEXER	N15 04 15	E120 49 03	Fly-by
DONIE	N14 49 21	E121 18 26	Fly-by
ESTEL	N14 13 15	E120 30 08	Fly-by
IBAGO	N13 32 38	E121 18 34	Fly-by
LAIYA	N13 34 19	E121 23 40	Fly-by
LUBAN	N13 51 15	E120 06 25	Fly-by
MEDAM	N14 43 51	E121 08 35	Fly-by
MIKEY	N14 54 21	E121 27 24	Fly-by
MONRE	N14 40 41	E120 45 30	Fly-by
MUTAN	N14 42 21	E121 22 30	Fly-by
NABAL	N14 28 17	E120 31 25	Fly-by
NATAY	N14 29 43	E121 16 52	Fly-by
PATCA	N14 47 23	E121 31 28	Fly-by
POLIO	N15 00 30	E121 55 00	Fly-by
RENZE	N14 34 06	E121 39 14	Fly-by
TADEL	N15 24 51	E120 25 58	Fly-by
WEEDI	N14 40 12	E121 35 39	Fly-by

CHANGE: WPT AYIFF COORD.