

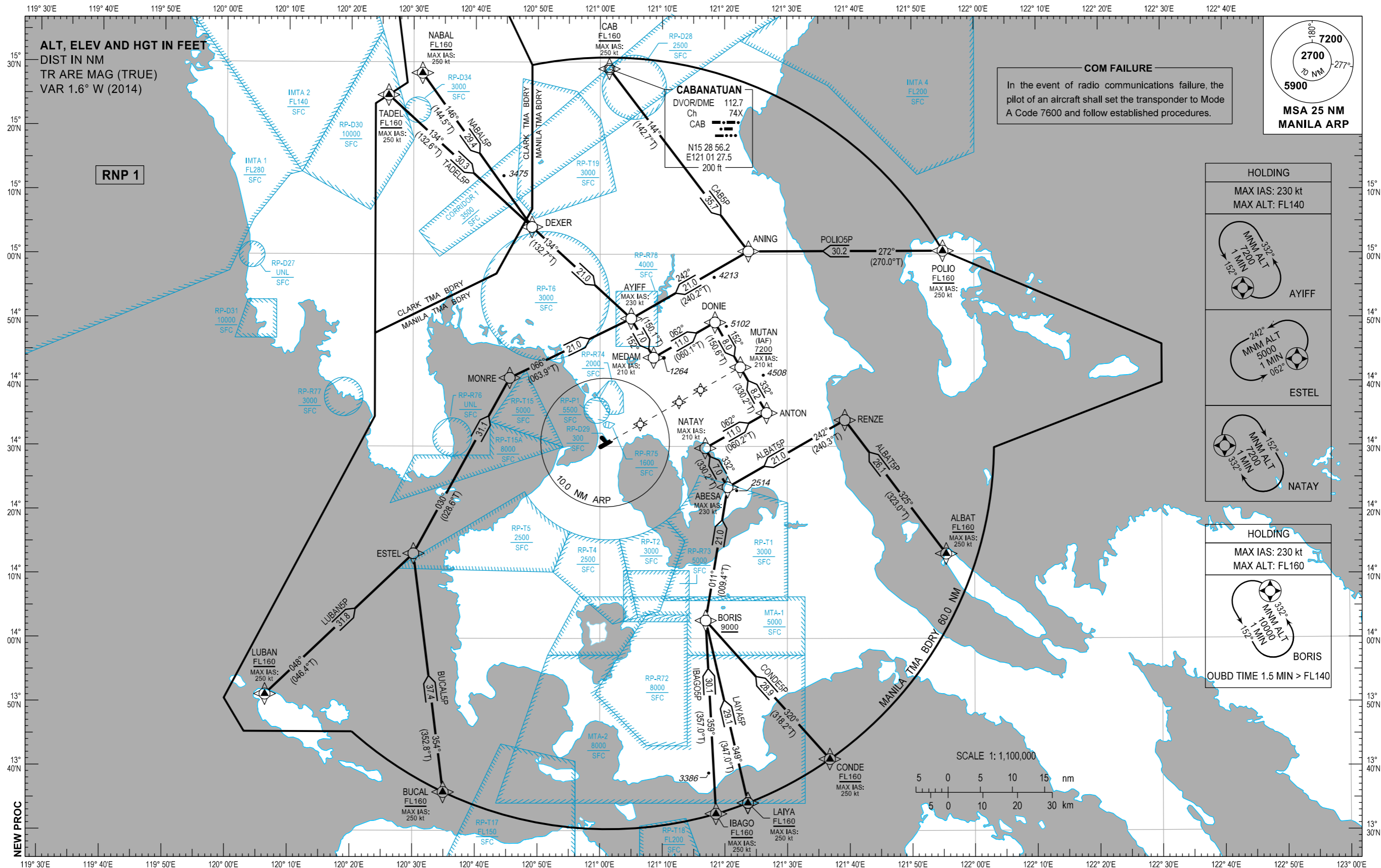
STANDARD ARRIVAL  
CHART - INSTRUMENT  
(STAR)

MANILA/Ninoy Aquino Intl (RPLL)  
RNP STAR RWY 24

ALBAT5P BUCAL5P CAB5P CONDE5P IBAGO5P  
LAIYA5P LUBAN5P NABAL5P POLIO5P TADEL5P

TRANSITION  
ALTITUDE  
11,000 ft

APP - 121.1 / 124.8  
TWR - 118.1 / 118.4  
GND - 121.8 / 122.0



**ARRIVAL ROUTE DESCRIPTION**

STAR	ROUTE	PROCEDURE	REMARKS
ALBAT5P	ALBAT - RENZE - ABESA - NATAY - ANTON - MUTAN	From ALBAT at or above FL160, to RENZE, to ABESA, to NATAY, to ANTON, to MUTAN at or above 7200FT.	
BUCAL5P	BUCAL - ESTEL - MONRE - AYIFF - MEDAM - DONIE - MUTAN	From BUCAL at or above FL160, to ESTEL, to MONRE, to AYIFF, to MEDAM, to DONIE, to MUTAN at or above 7200FT.	
CAB5P	CAB - ANING - AYIFF - MEDAM - DONIE - MUTAN	From CAB at or above FL160, to ANING, to AYIFF, to MEDAM, to DONIE, to MUTAN at or above 7200FT.	
CONDE5P	CONDE - BORIS - ABESA - NATAY - ANTON - MUTAN	From CONDE at or above FL160, to BORIS at or above 9000FT, to ABESA, to NATAY, to ANTON, to MUTAN at or above 7200FT.	
IBAGO5P	IBAGO - BORIS - ABESA - NATAY - ANTON - MUTAN	From IBAGO at or above FL160, to BORIS at or above 9000FT, to ABESA, to NATAY, to ANTON, to MUTAN at or above 7200FT.	
LAIYA5P	LAIYA - BORIS - ABESA - NATAY - ANTON - MUTAN	From LAIYA at or above FL160, to BORIS at or above 9000FT, to ABESA, to NATAY, to ANTON, to MUTAN at or above 7200FT.	
LUBAN5P	LUBAN - ESTEL - MONRE - AYIFF - MEDAM - DONIE - MUTAN	From LUBAN at or above FL160, to ESTEL, to MONRE, to AYIFF, to MEDAM, to DONIE, to MUTAN at or above 7200FT.	
NABAL5P	NABAL - DEXER - AYIFF - MEDAM - DONIE - MUTAN	From NABAL at or above FL160, to DEXER, to AYIFF, to MEDAM, to DONIE, to MUTAN at or above 7200FT.	
POLIO5P	POLIO - ANING - AYIFF - MEDAM - DONIE - MUTAN	From POLIO at or above FL160, to ANING, to AYIFF, to MEDAM, to DONIE, to MUTAN at or above 7200FT.	
TADEL5P	TADEL - DEXER - AYIFF - MEDAM - DONIE - MUTAN	From TADEL at or above FL160, to DEXER, to AYIFF, to MEDAM, to DONIE, to MUTAN at or above 7200FT.	

**WAYPOINT LIST**

Waypoint Name	Latitude	Longitude	Type
ABESA	N14 23 37	E121 20 27	Fly-by
ALBAT	N14 13 13	E121 55 27	Fly-by
ANING	N15 00 27	E121 23 48	Fly-by
ANTON	N14 35 14	E121 26 42	Fly-by
AYIFF	N14 59 57	E121 04 59	Fly-by
BORIS	N14 02 49	E121 16 56	Fly-by
BUCAL	N13 36 00	E120 34 56	Fly-by
CAB	N15 28 56	E121 01 27	Fly-by
CONDE	N13 41 09	E121 36 46	Fly-by
DEXER	N15 04 15	E120 49 03	Fly-by
DONIE	N14 49 21	E121 18 26.	Fly-by
ESTEL	N14 13 15	E120 30 08	Fly-by
IBAGO	N13 32 38	E121 18 34	Fly-by
LAIYA	N13 34 19	E121 23 40	Fly-by
LUBAN	N13 51 15	E120 06 25	Fly-by
MEDAM	N14 43 51	E121 08 35	Fly-by
MONRE	N14 40 41	E120 45 30	Fly-by
MUTAN	N14 42 21	E121 22 30	Fly-by
NABAL	N14 28 17	E120 31 25	Fly-by
NATAY	N14 29 43	E121 16 52	Fly-by
POLIO	N15 00 30	E121 55 00	Fly-by
RENZE	N14 34 06	E121 39 14	Fly-by
TADEL	N15 24 51	E120 25 58	Fly-by

PROPOSED CODING FOR ARRIVAL RNP STAR RWY24

Table 1: ALBAT5P

SEQ. NO.	PD	W/P ID	Flyover	Course Track °M (°T)	Magnetic Variation	Distance (NM)	TD	ALT (FT)	Speed (knots)	VPA (°)	Nav. Spec	Transition ID
10	IF	ALBAT	N	-	-	-	-	+FL160	250	-	RNP1	RW24
20	TF	RENZE	N	325° (323.0°)	-	26.1	-	-	-	-	RNP1	RW24
30	TF	ABESA	N	242° (240.3°)	-	21.0	-	-	230	-	RNP1	RW24
40	TF	NATAY	N	332° (330.2°)	-	7.0	-	-	210	-	RNP1	RW24
50	TF	ANTON	N	062° (060.2°)	-	11.0	-	-	-	-	RNP1	RW24
60	TF	MUTAN	N	332° (330.2°)	-	8.2	-	+7200	210	-	RNP1	RW24

Table 2: BUCAL5P

SEQ. NO.	PD	W/P ID	Flyover	Course Track °M (°T)	Magnetic Variation	Distance (NM)	TD	ALT (FT)	Speed (knots)	VPA (°)	Nav. Spec	Transition ID
10	IF	BUCAL	N	-	-	-	-	+FL160	250	-	RNP1	RW24
20	TF	ESTEL	N	354° (352.8°)	-	37.4	-	-	-	-	RNP1	RW24
30	TF	MONRE	N	030° (028.6°)	-	31.1	-	-	-	-	RNP1	RW24
40	TF	AYIFF	N	066° (063.9°)	-	21.0	-	-	230	-	RNP1	RW24
50	TF	MEDAM	N	152° (150.1°)	-	7.0	-	-	210	-	RNP1	RW24
60	TF	DONIE	N	062° (060.1°)	-	11.0	-	-	-	-	RNP1	RW24
70	TF	MUTAN	N	152° (150.6°)	-	8.0	-	+7200	210	-	RNP1	RW24

Table 3: CAB5P

SEQ. NO.	PD	W/P ID	Flyover	Course Track °M (°T)	Magnetic Variation	Distance (NM)	TD	ALT (FT)	Speed (knots)	VPA (°)	Nav. Spec	Transition ID
10	IF	CAB	N	-	-	-	-	+FL160	250	-	RNP1	RW24
20	TF	ANING	N	144° (142.7°)	-	35.7	-	-	-	-	RNP1	RW24
30	TF	AYIFF	N	242° (240.2°)	-	21.0	-	-	230	-	RNP1	RW24
40	TF	MEDAM	N	152° (150.1°)	-	7.0	-	-	210	-	RNP1	RW24
50	TF	DONIE	N	062° (060.1°)	-	11.0	-	-	-	-	RNP1	RW24
60	TF	MUTAN	N	152° (150.6°)	-	8.0	-	+7200	210	-	RNP1	RW24

Table 4: CONDE5P

SEQ. NO.	PD	W/P ID	Flyover	Course Track °M (°T)	Magnetic Variation	Distance (NM)	TD	ALT (FT)	Speed (knots)	VPA (°)	Nav. Spec	Transition ID
10	IF	CONDE	N	-	-	-	-	+FL160	250	-	RNP1	RW24
20	TF	BORIS	N	320° (318.2°)	-	28.9	-	+9000	-	-	RNP1	RW24
30	TF	ABESA	N	011° (009.4°)	-	21.0	-	-	230	-	RNP1	RW24
40	TF	NATAY	N	332° (330.2°)	-	7.0	-	-	210	-	RNP1	RW24
50	TF	ANTON	N	062° (060.2°)	-	11.0	-	-	-	-	RNP1	RW24
60	TF	MUTAN	N	332° (330.2°)	-	8.2	-	+7200	210	-	RNP1	RW24

Table 5: IBAGO5P

SEQ. NO.	PD	W/P ID	Flyover	Course Track °M (°T)	Magnetic Variation	Distance (NM)	TD	ALT (FT)	Speed (knots)	VPA (°)	Nav. Spec	Transition ID
10	IF	IBAGO	N	-	-	-	-	+FL160	250	-	RNP1	RW24
20	TF	BORIS	N	359° (357.0°)	-	30.1	-	+9000	-	-	RNP1	RW24
30	TF	ABESA	N	011° (009.4°)	-	21.0	-	-	230	-	RNP1	RW24
40	TF	NATAY	N	332° (330.2°)	-	7.0	-	-	210	-	RNP1	RW24
50	TF	ANTON	N	062° (060.2°)	-	11.0	-	-	-	-	RNP1	RW24
60	TF	MUTAN	N	332° (330.2°)	-	8.2	-	+7200	210	-	RNP1	RW24

Table 6: LAIYA5P

SEQ. NO.	PD	W/P ID	Flyover	Course Track °M (°T)	Magnetic Variation	Distance (NM)	TD	ALT (FT)	Speed (knots)	VPA (°)	Nav. Spec	Transition ID
10	IF	LAIYA	N	-	-	-	-	+FL160	250	-	RNP1	RW24
20	TF	BORIS	N	349° (347.0°)	-	29.1	-	+9000	-	-	RNP1	RW24
30	TF	ABESA	N	011° (009.4°)	-	21.0	-	-	230	-	RNP1	RW24
40	TF	NATAY	N	332° (330.2°)	-	7.0	-	-	210	-	RNP1	RW24
50	TF	ANTON	N	062° (060.2°)	-	11.0	-	-	-	-	RNP1	RW24
60	TF	MUTAN	N	332° (330.2°)	-	8.2	-	+7200	210	-	RNP1	RW24

**Table 7: LUBAN5P**

SEQ. NO.	PD	W/P ID	Flyover	Course Track °M (°T)	Magnetic Variation	Distance (NM)	TD	ALT (FT)	Speed (knots)	VPA (°)	Nav. Spec	Transition ID
10	IF	LUBAN	N	-	-	-	-	+FL160	250	-	RNP1	RW24
20	TF	ESTEL	N	048° (046.4°)	-	31.8	-	-	-	-	RNP1	RW24
30	TF	MONRE	N	030° (028.6°)	-	31.1	-	-	-	-	RNP1	RW24
40	TF	AYIFF	N	066° (063.9°)	-	21.0	-	-	230	-	RNP1	RW24
50	TF	MEDAM	N	152° (150.1°)	-	7.0	-	-	210	-	RNP1	RW24
60	TF	DONIE	N	062° (060.1°)	-	11.0	-	-	-	-	RNP1	RW24
70	TF	MUTAN	N	152° (150.6°)	-	8.0	-	+7200	210	-	RNP1	RW24

**Table 10: TADEL5P**

SEQ. NO.	PD	W/P ID	Flyover	Course Track °M (°T)	Magnetic Variation	Distance (NM)	TD	ALT (FT)	Speed (knots)	VPA (°)	Nav. Spec	Transition ID
10	IF	TADEL	N	-	-	-	-	+FL160	250	-	RNP1	RW24
20	TF	DEXER	N	134° (132.6°)	-	30.3	-	-	-	-	RNP1	RW24
30	TF	AYIFF	N	134° (132.7°)	-	21.0	-	-	230	-	RNP1	RW24
40	TF	MEDAM	N	152° (150.1°)	-	7.0	-	-	210	-	RNP1	RW24
50	TF	DONIE	N	062° (060.1°)	-	11.0	-	-	-	-	RNP1	RW24
60	TF	MUTAN	N	152° (150.6°)	-	8.0	-	+7200	210	-	RNP1	RW24

**Table 8: NABAL5P**

SEQ. NO.	PD	W/P ID	Flyover	Course Track °M (°T)	Magnetic Variation	Distance (NM)	TD	ALT (FT)	Speed (knots)	VPA (°)	Nav. Spec	Transition ID
10	IF	NABAL	N	-	-	-	-	+FL160	250	-	RNP1	RW24
20	TF	DEXER	N	146° (144.5°)	-	29.4	-	-	-	-	RNP1	RW24
30	TF	AYIFF	N	134° (132.7°)	-	21.0	-	-	230	-	RNP1	RW24
40	TF	MEDAM	N	152° (150.1°)	-	7.0	-	-	210	-	RNP1	RW24
50	TF	DONIE	N	062° (060.1°)	-	11.0	-	-	-	-	RNP1	RW24
60	TF	MUTAN	N	152° (150.6°)	-	8.0	-	+7200	210	-	RNP1	RW24

**Table 9: POLIO5P**

SEQ. NO.	PD	W/P ID	Flyover	Course Track °M (°T)	Magnetic Variation	Distance (NM)	TD	ALT (FT)	Speed (knots)	VPA (°)	Nav. Spec	Transition ID
10	IF	POLIO	N	-	-	-	-	+FL160	250	-	RNP1	RW24
20	TF	ANING	N	272° (270.0°)	-	30.2	-	-	-	-	RNP1	RW24
30	TF	AYIFF	N	242° (240.2°)	-	21.0	-	-	230	-	RNP1	RW24
40	TF	MEDAM	N	152° (150.1°)	-	7.0	-	-	210	-	RNP1	RW24
50	TF	DONIE	N	062° (060.1°)	-	11.0	-	-	-	-	RNP1	RW24
60	TF	MUTAN	N	152° (150.6°)	-	8.0	-	+7200	210	-	RNP1	RW24