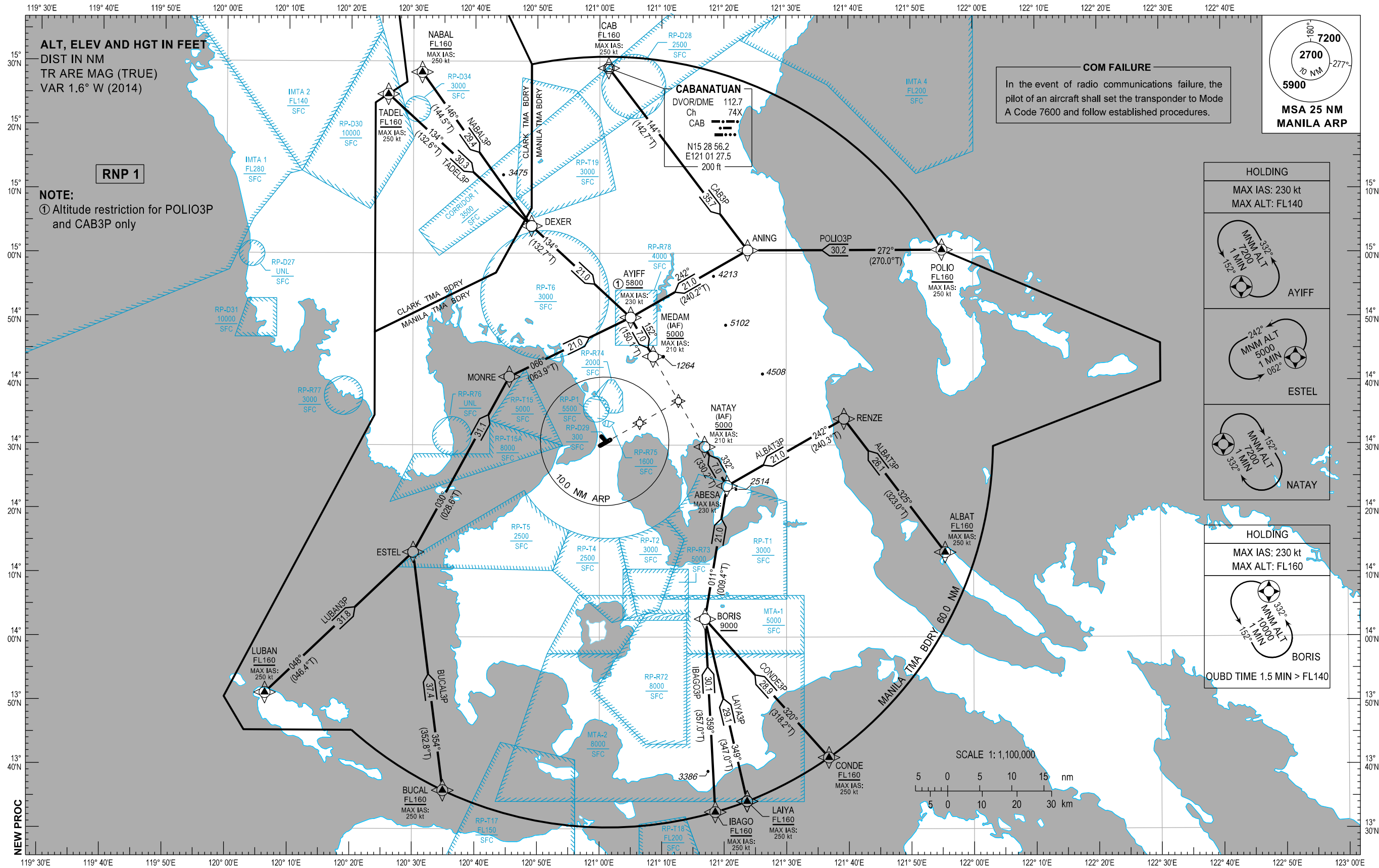


STANDARD ARRIVAL
CHART - INSTRUMENT
(STAR)

MANILA/Ninoy Aquino Intl (RPLL)
RNP STAR RWY 24
ALBAT3P BUCAL3P CAB3P CONDE3P IBAGO3P
LAIYA3P LUBAN3P NABAL3P POLIO3P TADEL3P

TRANSITION
ALTITUDE
11,000 ft

APP - 121.1 / 124.8
TWR - 118.1 / 118.4
GND - 121.8 / 122.0



ARRIVAL ROUTE DESCRIPTION

STAR	ROUTE	PROCEDURE	REMARKS
ALBAT3P	ALBAT - RENZE - ABESA - NATAY	From ALBAT at or above FL160, to RENZE, to ABESA, to NATAY at or above 5000FT.	
BUCAL3P	BUCAL - ESTEL - MONRE - AYIFF - MEDAM	From BUCAL at or above FL160, to ESTEL, to MONRE, to AYIFF, to MEDAM at or above 5000FT.	
CAB3P	CAB - ANING - AYIFF - MEDAM	From CAB at or above FL160, to ANING, to AYIFF at or above 5800FT, to MEDAM at or above 5000FT.	
CONDE3P	CONDE - BORIS - ABESA - NATAY	From CONDE at or above FL160, to BORIS at or above 9000FT, to ABESA, to NATAY at or above 5000FT.	
IBAGO3P	IBAGO - BORIS - ABESA - NATAY	From IBAGO at or above FL160, to BORIS at or above 9000FT, to ABESA, to NATAY at or above 5000FT.	
LAIYA3P	LAIYA - BORIS - ABESA - NATAY	From LAIYA at or above FL160, to BORIS at or above 9000FT, to ABESA, to NATAY at or above 5000FT.	
LUBAN3P	LUBAN - ESTEL - MONRE - AYIFF - MEDAM	From LUBAN at or above FL160, to ESTEL, to MONRE, to AYIFF, to MEDAM at or above 5000FT.	
NABAL3P	NABAL - DEXER - AYIFF - MEDAM	From NABAL at or above FL160, to DEXER, to AYIFF, to MEDAM at or above 5000FT.	
POLIO3P	POLIO - ANING - AYIFF - MEDAM	From POLIO at or above FL160, to ANING, to AYIFF at or above 5800FT, to MEDAM at or above 5000FT.	
TADEL3P	TADEL - DEXER - AYIFF - MEDAM	From TADEL at or above FL160, to DEXER, to AYIFF, to MEDAM at or above 5000FT.	

WAYPOINT LIST

Waypoint Name	Latitude	Longitude	Type
ABESA	N14 23 37	E121 20 27	Fly-by
ALBAT	N14 13 13	E121 55 27	Fly-by
ANING	N15 00 27	E121 23 48	Fly-by
AYIFF	N14 59 57	E121 04 59	Fly-by
BORIS	N14 02 49	E121 16 56	Fly-by
BUCAL	N13 36 00	E120 34 56	Fly-by
CAB	N15 28 56	E121 01 27	Fly-by
CONDE	N13 41 09	E121 36 46	Fly-by
DEXER	N15 04 15	E120 49 03	Fly-by
ESTEL	N14 13 15	E120 30 08	Fly-by
IBAGO	N13 32 38	E121 18 34	Fly-by
LAIYA	N13 34 19	E121 23 40	Fly-by
LUBAN	N13 51 15	E120 06 25	Fly-by
MEDAM	N14 43 51	E121 08 35	Fly-by
MONRE	N14 40 41	E120 45 30	Fly-by
NABAL	N14 28 17	E120 31 25	Fly-by
NATAY	N14 29 43	E121 16 52	Fly-by
POLIO	N15 00 30	E121 55 00	Fly-by
RENZE	N14 34 06	E121 39 14	Fly-by
TADEL	N15 24 51	E120 25 58	Fly-by

PROPOSED CODING FOR ARRIVAL RNP STAR RWY24

Table 1: ALBAT3P

SEQ. NO.	PD	W/P ID	Flyover	Course Track °M (°T)	Magnetic Variation	Distance (NM)	TD	ALT (FT)	Speed (knots)	VPA (°)	Nav. Spec	Transition ID
10	IF	ALBAT	N	-	-	-	-	+FL160	250	-	RNP1	RW24
20	TF	RENZE	N	325° (323.0°)	-	26.1	-	-	-	-	RNP1	RW24
30	TF	ABESA	N	242° (240.3°)	-	21.0	-	-	230	-	RNP1	RW24
40	TF	NATAY	N	332° (330.2°)	-	7.0	-	+5000	210	-	RNP1	RW24

Table 2: BUCAL3P

SEQ. NO.	PD	W/P ID	Flyover	Course Track °M (°T)	Magnetic Variation	Distance (NM)	TD	ALT (FT)	Speed (knots)	VPA (°)	Nav. Spec	Transition ID
10	IF	BUCAL	N	-	-	-	-	+FL160	250	-	RNP1	RW24
20	TF	ESTEL	N	354° (352.8°)	-	37.4	-	-	-	-	RNP1	RW24
30	TF	MONRE	N	030° (028.6°)	-	31.1	-	-	-	-	RNP1	RW24
40	TF	AYIFF	N	066° (063.9°)	-	21.0	-	-	230	-	RNP1	RW24
50	TF	MEDAM	N	152° (150.1°)	-	7.0	-	+5000	210	-	RNP1	RW24

Table 3: CAB3P

SEQ. NO.	PD	W/P ID	Flyover	Course Track °M (°T)	Magnetic Variation	Distance (NM)	TD	ALT (FT)	Speed (knots)	VPA (°)	Nav. Spec	Transition ID
10	IF	CAB	N	-	-	-	-	+FL160	250	-	RNP1	RW24
20	TF	ANING	N	144° (142.7°)	-	35.7	-	-	-	-	RNP1	RW24
30	TF	AYIFF	N	242° (240.2°)	-	21.0	-	+5800	230	-	RNP1	RW24
40	TF	MEDAM	N	152° (150.1°)	-	7.0	-	+5000	210	-	RNP1	RW24

Table 4: CONDE3P

SEQ. NO.	PD	W/P ID	Flyover	Course Track °M (°T)	Magnetic Variation	Distance (NM)	TD	ALT (FT)	Speed (knots)	VPA (°)	Nav. Spec	Transition ID
10	IF	CONDE	N	-	-	-	-	+FL160	250	-	RNP1	RW24
20	TF	BORIS	N	320° (318.2°)	-	28.9	-	+9000	-	-	RNP1	RW24
30	TF	ABESA	N	011° (009.4°)	-	21.0	-	-	230	-	RNP1	RW24
40	TF	NATAY	N	332° (330.2°)	-	7.0	-	+5000	210	-	RNP1	RW24

Table 5: IBAGO3P

SEQ. NO.	PD	W/P ID	Flyover	Course Track °M (°T)	Magnetic Variation	Distance (NM)	TD	ALT (FT)	Speed (knots)	VPA (°)	Nav. Spec	Transition ID
10	IF	IBAGO	N	-	-	-	-	+FL160	250	-	RNP1	RW24
20	TF	BORIS	N	359° (357.0°)	-	30.1	-	+9000	-	-	RNP1	RW24
30	TF	ABESA	N	011° (009.4°)	-	21.0	-	-	230	-	RNP1	RW24
40	TF	NATAY	N	332° (330.2°)	-	7.0	-	+5000	210	-	RNP1	RW24

Table 6: LAIYA3P

SEQ. NO.	PD	W/P ID	Flyover	Course Track °M (°T)	Magnetic Variation	Distance (NM)	TD	ALT (FT)	Speed (knots)	VPA (°)	Nav. Spec	Transition ID
10	IF	LAIYA	N	-	-	-	-	+FL160	250	-	RNP1	RW24
20	TF	BORIS	N	349° (347.0°)	-	29.1	-	+9000	-	-	RNP1	RW24
30	TF	ABESA	N	011° (009.4°)	-	21.0	-	-	230	-	RNP1	RW24
40	TF	NATAY	N	332° (330.2°)	-	7.0	-	+5000	210	-	RNP1	RW24

Table 7: LUBAN3P

SEQ. NO.	PD	W/P ID	Flyover	Course Track °M (°T)	Magnetic Variation	Distance (NM)	TD	ALT (FT)	Speed (knots)	VPA (°)	Nav. Spec	Transition ID
10	IF	LUBAN	N	-	-	-	-	+FL160	250	-	RNP1	RW24
20	TF	ESTEL	N	048° (046.4°)	-	31.8	-	-	-	-	RNP1	RW24
30	TF	MONRE	N	030° (028.6°)	-	31.1	-	-	-	-	RNP1	RW24
40	TF	AYIFF	N	066° (063.9°)	-	21.0	-	-	230	-	RNP1	RW24
50	TF	MEDAM	N	152° (150.1°)	-	7.0	-	+5000	210	-	RNP1	RW24

Table 8: NABAL3P

SEQ. NO.	PD	W/P ID	Flyover	Course Track °M (°T)	Magnetic Variation	Distance (NM)	TD	ALT (FT)	Speed (knots)	VPA (°)	Nav. Spec	Transition ID
10	IF	NABAL	N	-	-	-	-	+FL160	250	-	RNP1	RW24
20	TF	DEXER	N	146° (144.5°)	-	29.4	-	-	-	-	RNP1	RW24
30	TF	AYIFF	N	134° (132.7°)	-	21.0	-	-	230	-	RNP1	RW24
40	TF	MEDAM	N	152° (150.1°)	-	7.0	-	+5000	210	-	RNP1	RW24

Table 9: POLIO3P

SEQ. NO.	PD	W/P ID	Flyover	Course Track °M (°T)	Magnetic Variation	Distance (NM)	TD	ALT (FT)	Speed (knots)	VPA (°)	Nav. Spec	Transition ID
10	IF	POLIO	N	-	-	-	-	+FL160	250	-	RNP1	RW24
20	TF	ANING	N	272° (270.0°)	-	30.2	-	-	-	-	RNP1	RW24
30	TF	AYIFF	N	242° (240.2°)	-	21.0	-	+5800	230	-	RNP1	RW24
40	TF	MEDAM	N	152° (150.1°)	-	7.0	-	+5000	210	-	RNP1	RW24

Table 10: TADEL3P

SEQ. NO.	PD	W/P ID	Flyover	Course Track °M (°T)	Magnetic Variation	Distance (NM)	TD	ALT (FT)	Speed (knots)	VPA (°)	Nav. Spec	Transition ID
10	IF	TADEL	N	-	-	-	-	+FL160	250	-	RNP1	RW24
20	TF	DEXER	N	134° (132.6°)	-	30.3	-	-	-	-	RNP1	RW24
30	TF	AYIFF	N	134° (132.7°)	-	21.0	-	-	230	-	RNP1	RW24
40	TF	MEDAM	N	152° (150.1°)	-	7.0	-	+5000	210	-	RNP1	RW24