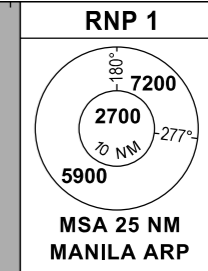


STANDARD ARRIVAL
CHART - INSTRUMENT
(STAR)

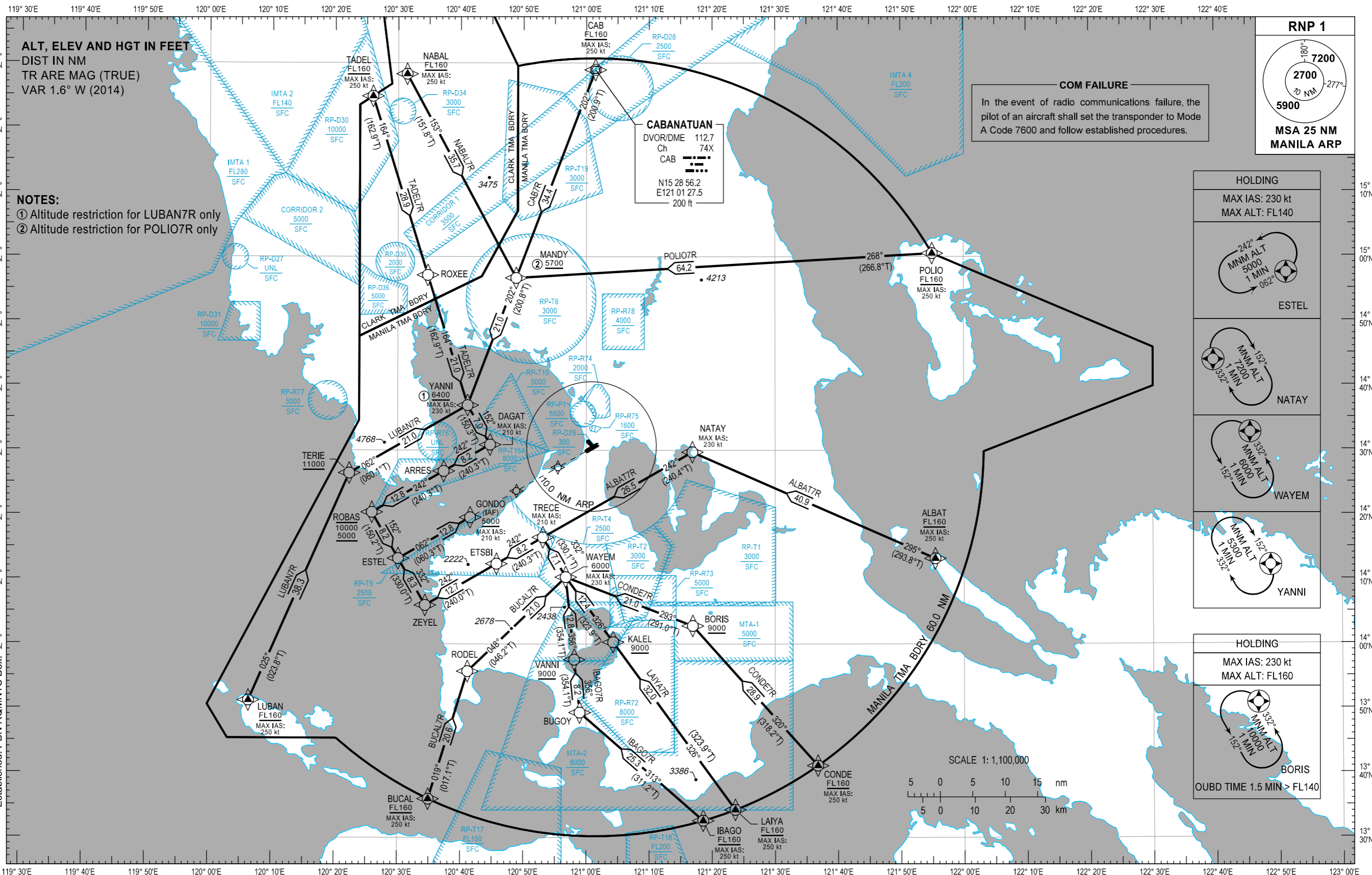
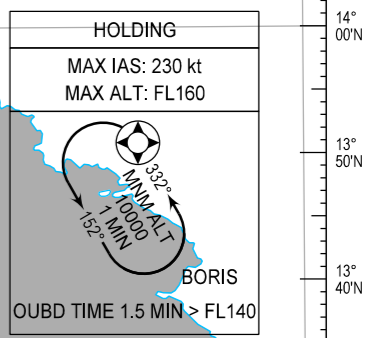
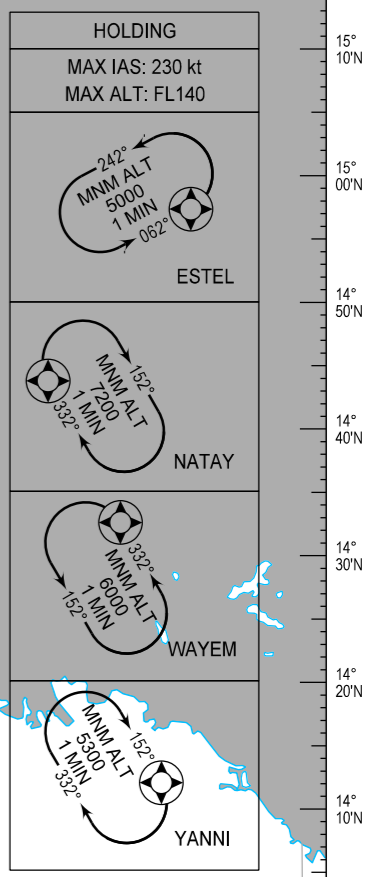
MANILA/Ninoy Aquino Intl (RPLL)
RNP STAR RWY 06
ALBAT7R BUCAL7R CAB7R CONDE7R IBAGO7R
LAIYA7R LUBAN7R NABAL7R POLIO7R TADEL7R

TRANSITION
ALTITUDE
11,000 ft

APP - 121.1 / 124.8
TWR - 118.1 / 118.4
GND - 121.8 / 122.0



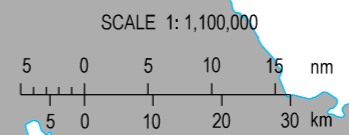
COM FAILURE
In the event of radio communications failure, the pilot of an aircraft shall set the transponder to Mode A Code 7600 and follow established procedures.



ALT, ELEV AND HGT IN FEET
DIST IN NM
TR ARE MAG (TRUE)
VAR 1.6° W (2014)

- NOTES:**
- ① Altitude restriction for LUBAN7R only
 - ② Altitude restriction for POLIO7R only

CHANGES: Corridor 2, RP-D35 and RP-D36
Established. PBN RQMNTS Box.



ARRIVAL ROUTE DESCRIPTION

| STAR | ROUTE | PROCEDURE | REMARKS |
|---------|---|--|---------|
| ALBAT7R | ALBAT - NATAY - TRECE - ETSBI - ZEYEL - ESTEL - GONDO | From ALBAT at or above FL160, to NATAY, to TRECE, to ETSBI, to ZEYEL, to ESTEL, to GONDO at or above 5000FT. | |
| BUCAL7R | BUCAL - RODEL - WAYEM - TRECE - ETSBI - ZEYEL - ESTEL - GONDO | From BUCAL at or above FL160, to RODEL, to WAYEM at or above 6000FT, to TRECE, to ETSBI, to ZEYEL, to ESTEL, to GONDO at or above 5000FT. | |
| CAB7R | CAB - MANDY - YANNI - DAGAT - ARRES - ROBAS - ESTEL - GONDO | From CAB at or above FL160, to MANDY, to YANNI, to DAGAT, to ARRES, to ROBAS between 5000FT and 10000FT, to ESTEL, to GONDO at or above 5000FT. | |
| CONDE7R | CONDE - BORIS - WAYEM - TRECE - ETSBI - ZEYEL - ESTEL - GONDO | From CONDE at or above FL160, to BORIS at or above 9000FT, to WAYEM at or above 6000FT, to TRECE, to ETSBI, to ZEYEL, to ESTEL, to GONDO at or above 5000FT. | |
| IBAGO7R | IBAGO - BUGOY - VANNI - WAYEM - TRECE - ETSBI - ZEYEL - ESTEL - GONDO | From IBAGO at or above FL160, to BUGOY, to VANNI at or above 9000FT, to WAYEM at or above 6000FT, to TRECE, to ETSBI, to ZEYEL, to ESTEL, to GONDO at or above 5000FT. | |
| LAIYA7R | LAIYA - KALEL - WAYEM - TRECE - ETSBI - ZEYEL - ESTEL - GONDO | From LAIYA at or above FL160, to KALEL at or above 9000FT, to WAYEM at or above 6000FT, to TRECE, to ETSBI, to ZEYEL, to ESTEL, to GONDO at or above 5000FT. | |
| LUBAN7R | LUBAN - TERIE - YANNI - DAGAT - ARRES - ROBAS - ESTEL - GONDO | From LUBAN at or above FL160, to TERIE at or above 11000FT, to YANNI at or above 6400FT, to DAGAT, to ARRES, to ROBAS between 5000FT and 10000FT, to ESTEL, to GONDO at or above 5000FT. | |
| NABAL7R | NABAL - MANDY - YANNI - DAGAT - ARRES - ROBAS - ESTEL - GONDO | From NABAL at or above FL160, to MANDY, to YANNI, to DAGAT, to ARRES, to ROBAS between 5000FT and 10000FT, to ESTEL, to GONDO at or above 5000FT. | |
| POLIO7R | POLIO - MANDY - YANNI - DAGAT - ARRES - ROBAS - ESTEL - GONDO | From POLIO at or above FL160, to MANDY at or above 5700FT, to YANNI, to DAGAT, to ARRES, to ROBAS between 5000FT and 10000FT, to ESTEL, to GONDO at or above 5000FT. | |
| TADEL7R | TADEL - ROXEE - YANNI - DAGAT - ARRES - ROBAS - ESTEL - GONDO | From TADEL at or above FL160, to ROXEE, to YANNI, to DAGAT, to ARRES, to ROBAS between 5000FT and 10000FT, to ESTEL, to GONDO at or above 5000FT. | |

WAYPOINT LIST

| Waypoint Name | Latitude | Longitude | Type |
|---------------|-------------|--------------|--------|
| ALBAT | N14 13 13 | E121 55 27 | Fly-by |
| ARRES | N14 26 47 | E120 37 21 | Fly-by |
| BORIS | N14 02 49 | E121 16 56 | Fly-by |
| BUCAL | N13 36 00 | E120 34 56 | Fly-by |
| BUGOY | N13 49 23 | E120 58 59 | Fly-by |
| CAB | N15 28 56.2 | E121 01 27.5 | Fly-by |
| CONDE | N13 41 09 | E121 36 46 | Fly-by |
| DAGAT | N14 30 53 | E120 44 43 | Fly-by |
| ESTEL | N14 13 15 | E120 30 08 | Fly-by |
| ETSBI | N14 12 26 | 120 45 45 | Fly-by |
| GONDO | N14 19 36 | E120 41 33 | Fly-by |
| IBAGO | N13 32 38 | E121 18 34 | Fly-by |
| KALEL | N14 00 17 | E121 04 18 | Fly-by |
| LAIYA | N13 34 19 | E121 23 40 | Fly-by |
| LUBAN | N13 51 15 | E120 06 25 | Fly-by |
| MANDY | N14 56 42 | E120 48 49 | Fly-by |
| NABAL | N15 28 17 | E120 31 25 | Fly-by |
| NATAY | N14 29 43 | E121 16 52 | Fly-by |
| POLIO | N15 00 30 | E121 55 00 | Fly-by |
| ROBAS | N14 20 25 | E120 25 56 | Fly-by |
| ROXEE | N14 57 08 | E120 34 46 | Fly-by |
| TADEL | N15 24 51 | E120 25 58 | Fly-by |
| TERIE | N14 26 29 | E120 22 20 | Fly-by |
| TRECE | N14 16 31 | E120 53 07 | Fly-by |
| VANNI | N13 57 34 | E120 58 07 | Fly-by |
| WAYEM | N14 10 21 | E120 56 46 | Fly-by |
| YANNI | N14 36 58 | E120 41 08 | Fly-by |
| ZEYEL | N14 06 01 | E120 34 25 | Fly-by |