

STANDARD ARRIVAL  
CHART - INSTRUMENT  
(STAR)

MANILA/Ninoy Aquino Intl (RPLL)  
RNP STAR RWY 06  
ALBAT5R BUCAL5R CAB5R CONDE5R IBAGO5R  
LAIYA5R LUBAN5R NABAL5R POLIO5R TADEL5R

TRANSITION  
ALTITUDE  
11,000 ft

APP - 121.1 / 124.8  
TWR - 118.1 / 118.4  
GND - 121.8 / 122.0

**RNP 1**

**MSA 25 NM  
MANILA ARP**

**COM FAILURE**  
In the event of radio communications failure, the pilot of an aircraft shall set the transponder to Mode A Code 7600 and follow established procedures.

**HOLDING**  
MAX IAS: 230 kt  
MAX ALT: FL140

**NATAY**  
MINM ALT 7200  
1 MIN

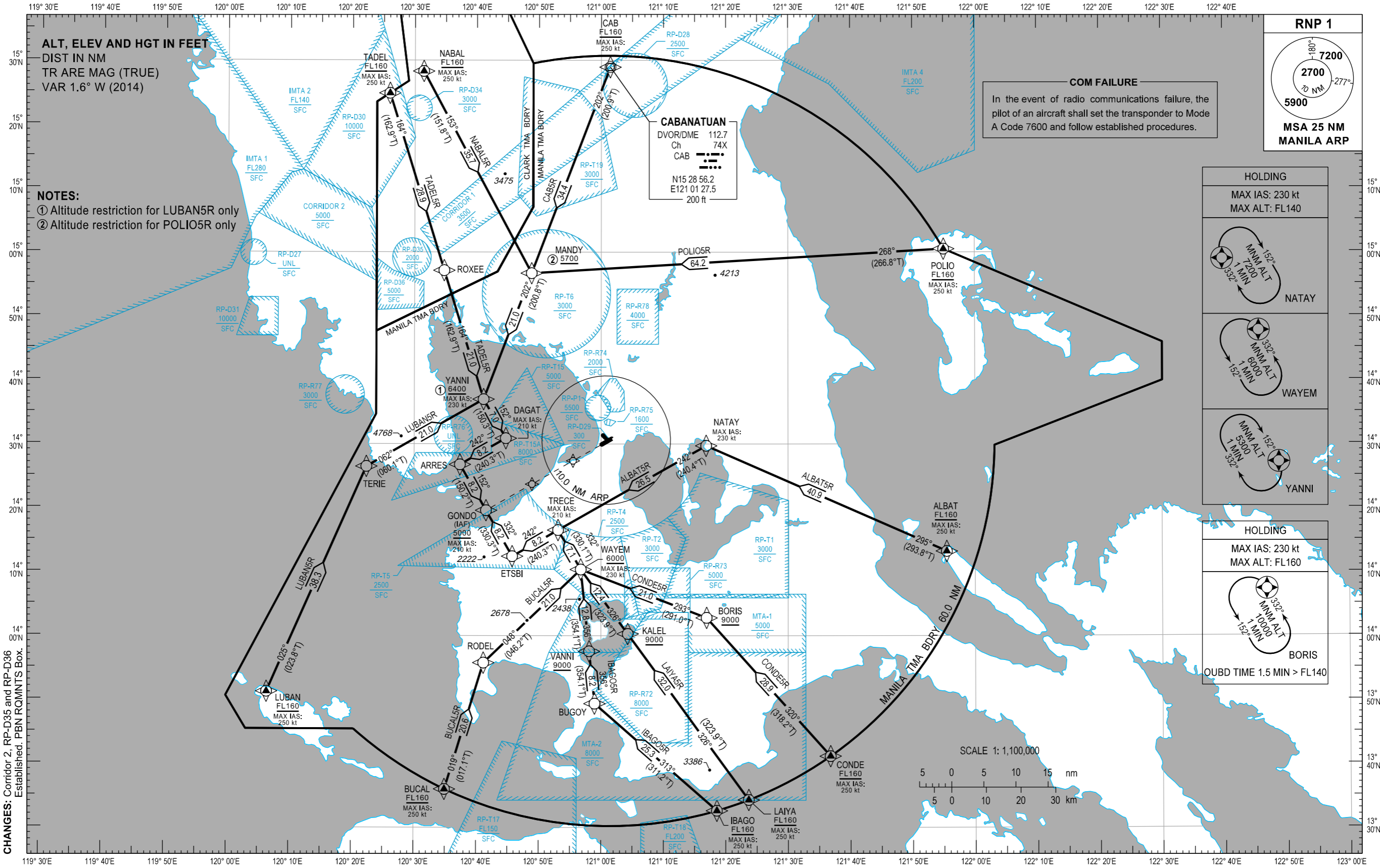
**WAYEM**  
MINM ALT 6000  
1 MIN

**YANNI**  
MINM ALT 5900  
1 MIN

**HOLDING**  
MAX IAS: 230 kt  
MAX ALT: FL160

**BORIS**  
MINM ALT 10000  
1 MIN

OUBD TIME 1.5 MIN > FL140



**ARRIVAL ROUTE DESCRIPTION**

**WAYPOINT LIST**

STAR	ROUTE	PROCEDURE	REMARKS
ALBAT5R	ALBAT - NATAY - TRECE - ETSBI - GONDO	From ALBAT at or above FL160, to NATAY, to TRECE, to ETSBI, to GONDO at or above 5000FT.	
BUCAL5R	BUCAL - RODEL - WAYEM - TRECE - ETSBI - GONDO	From BUCAL at or above FL160, to RODEL, to WAYEM at or above 6000FT, to TRECE, to ETSBI, to GONDO at or above 5000FT.	
CAB5R	CAB - MANDY - YANNI - DAGAT - ARRES - GONDO	From CAB at or above FL160, to MANDY, to YANNI, to DAGAT, to ARRES, to GONDO at or above 5000FT.	
CONDE5R	CONDE - BORIS - WAYEM - TRECE - ETSBI - GONDO	From CONDE at or above FL160, to BORIS at or above 9000FT, to WAYEM at or above 6000FT, to TRECE, to ETSBI, to GONDO at or above 5000FT.	
IBAGO5R	IBAGO - BUGOY - VANNI - WAYEM - TRECE - ETSBI - GONDO	From IBAGO at or above FL160, to BUGOY, to VANNI at or above 9000FT, to WAYEM at or above 6000FT, to TRECE, to ETSBI, to GONDO at or above 5000FT.	
LAIYA5R	LAIYA - KALEL - WAYEM - TRECE - ETSBI - GONDO	From LAIYA at or above FL160, to KALEL at or above 9000FT, to WAYEM at or above 6000FT, to TRECE, to ETSBI, to GONDO at or above 5000FT.	
LUBAN5R	LUBAN - TERIE - YANNI - DAGAT - ARRES - GONDO	From LUBAN at or above FL160, to TERIE, to YANNI at or above 6400FT, to DAGAT, to ARRES, to GONDO at or above 5000FT.	
NABAL5R	NABAL - MANDY - YANNI - DAGAT - ARRES - GONDO	From NABAL at or above FL160, to MANDY, to YANNI, to DAGAT, to ARRES, to GONDO at or above 5000FT.	
POLIO5R	POLIO - MANDY - YANNI - DAGAT - ARRES - GONDO	From POLIO at or above FL160, to MANDY at or above 5700FT, to YANNI, to DAGAT, to ARRES, to GONDO at or above 5000FT.	
TADEL5R	TADEL - ROXEE - YANNI - DAGAT - ARRES - GONDO	From TADEL at or above FL160, to ROXEE, to YANNI, to DAGAT, to ARRES, to GONDO at or above 5000FT.	

Waypoint Name	Latitude	Longitude	Type
ALBAT	N14 13 13	E121 55 27	Fly-by
ARRES	N14 26 47	E120 37 21	Fly-by
BORIS	N14 02 49	E121 16 56	Fly-by
BUCAL	N13 36 00	E120 34 56	Fly-by
BUGOY	N13 49 23	E120 58 59	Fly-by
CAB	N15 28 56.2	E121 01 27.5	Fly-by
CONDE	N13 41 09	E121 36 46	Fly-by
DAGAT	N14 30 53	E120 44 43	Fly-by
ETSBI	N14 12 26	120 45 45	Fly-by
GONDO	N14 19 36	E120 41 33	Fly-by
IBAGO	N13 32 38	E121 18 34	Fly-by
KALEL	N14 00 17	E121 04 18	Fly-by
LAIYA	N13 34 19	E121 23 40	Fly-by
LUBAN	N13 51 15	E120 06 25	Fly-by
MANDY	N14 56 42	E120 48 49	Fly-by
NABAL	N15 28 17	E120 31 25	Fly-by
NATAY	N14 29 43	E121 16 52	Fly-by
POLIO	N15 00 30	E121 55 00	Fly-by
RODEL	N13 55 46	E120 41 10	Fly-by
ROXEE	N14 57 08	E120 34 46	Fly-by
TADEL	N15 24 51	E120 25 58	Fly-by
TERIE	N14 26 29	E120 22 20	Fly-by
TRECE	N14 16 31	E120 53 07	Fly-by
VANNI	N13 57 34	E120 58 07	Fly-by
WAYEM	N14 10 21	E120 56 46	Fly-by
YANNI	N14 36 59	E120 41 08	Fly-by