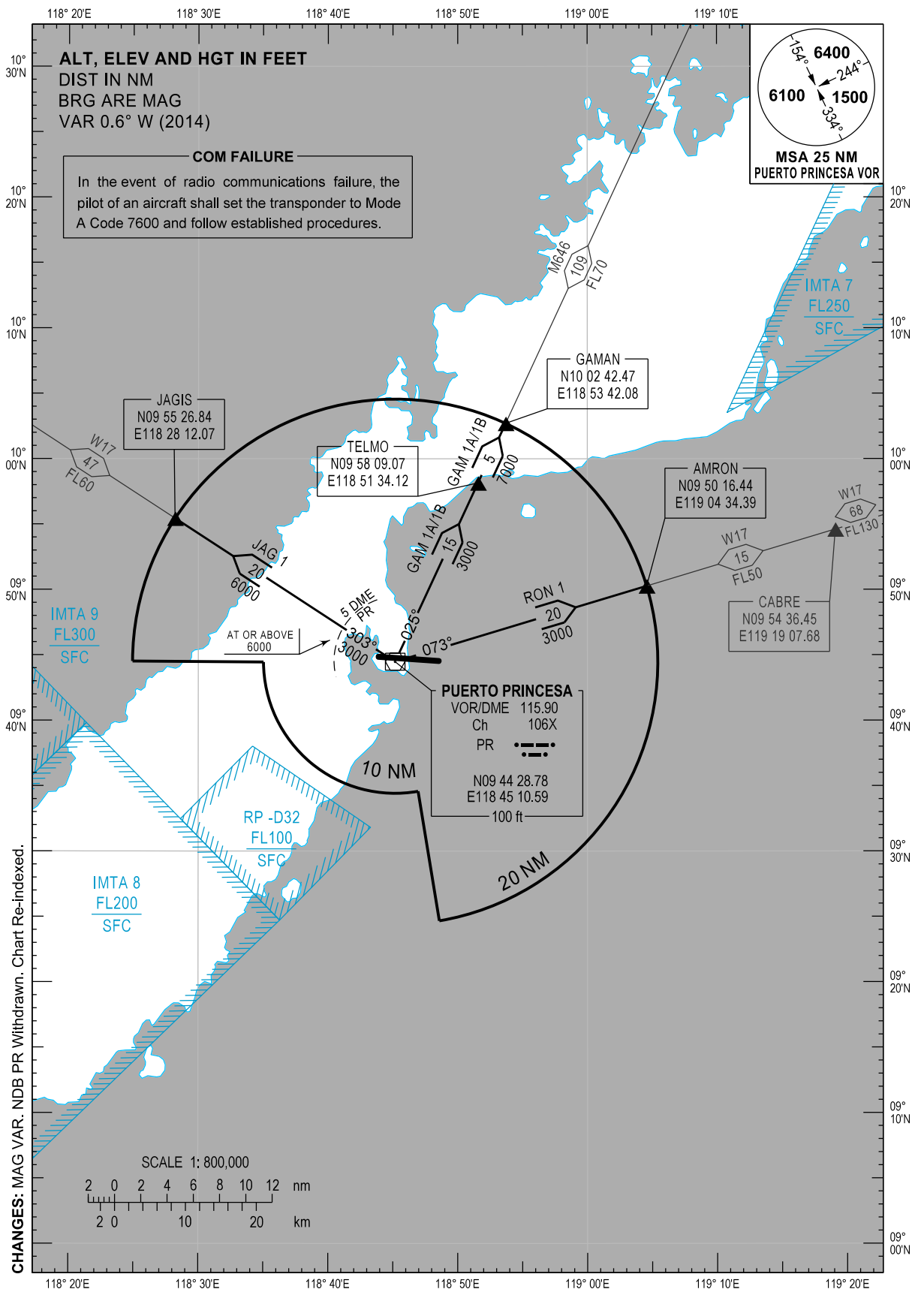


**STANDARD DEPARTURE
CHART INSTRUMENT
(SID) - ICAO**

TRANSITION
ALTITUDE
11,000 ft

TWR - 118.1
APP - 122.0
ACC - 118.9 Manila West Sector

**PALAWAN/Puerto Princesa Intl (RPVP)
RWY 09
GAM 1A/1B JAG 1 RON 1**



DEPARTURE ROUTE DESCRIPTION

SID	TAKE-OFF	PROCEDURE	REMARKS
AMRON (RON) 1	RWY09 - Left turn	Intercept and track-out PR VOR/DME R073 to cross AMRON at FL50 or above.	
GAMAN (GAM) 1A	RWY09 - Right turn	Climb to cross PR VOR/DME at 3000FT or above. Track-out on PR VOR/DME R025 to cross TELMO at 7000FT or above. Continue climb to GAMAN.	When weather is VMC, climb on course during daytime may be authorized by ATC depending on traffic condition.
GAMAN (GAM) 1B For High Performance Aircraft	RWY09 - Straight-out departure to 3000FT then left turn	Intercept and track-out on PR VOR/DME R025 to cross TELMO at 7000FT or above. Continue climb to GAMAN.	
JAGIS (JAG) 1	RWY09 - Right turn	Climb to cross PR VOR/DME at 3000FT or above. Track-out on PR R303 to cross 5 DME fix at 6000FT or above. Continue climb to JAGIS.	

NOTE: When weather is VMC, IFR departure from RWY27 may be authorized by ATC depending on traffic condition. All IFR departure from RWY27 shall execute a left turn after airborne.