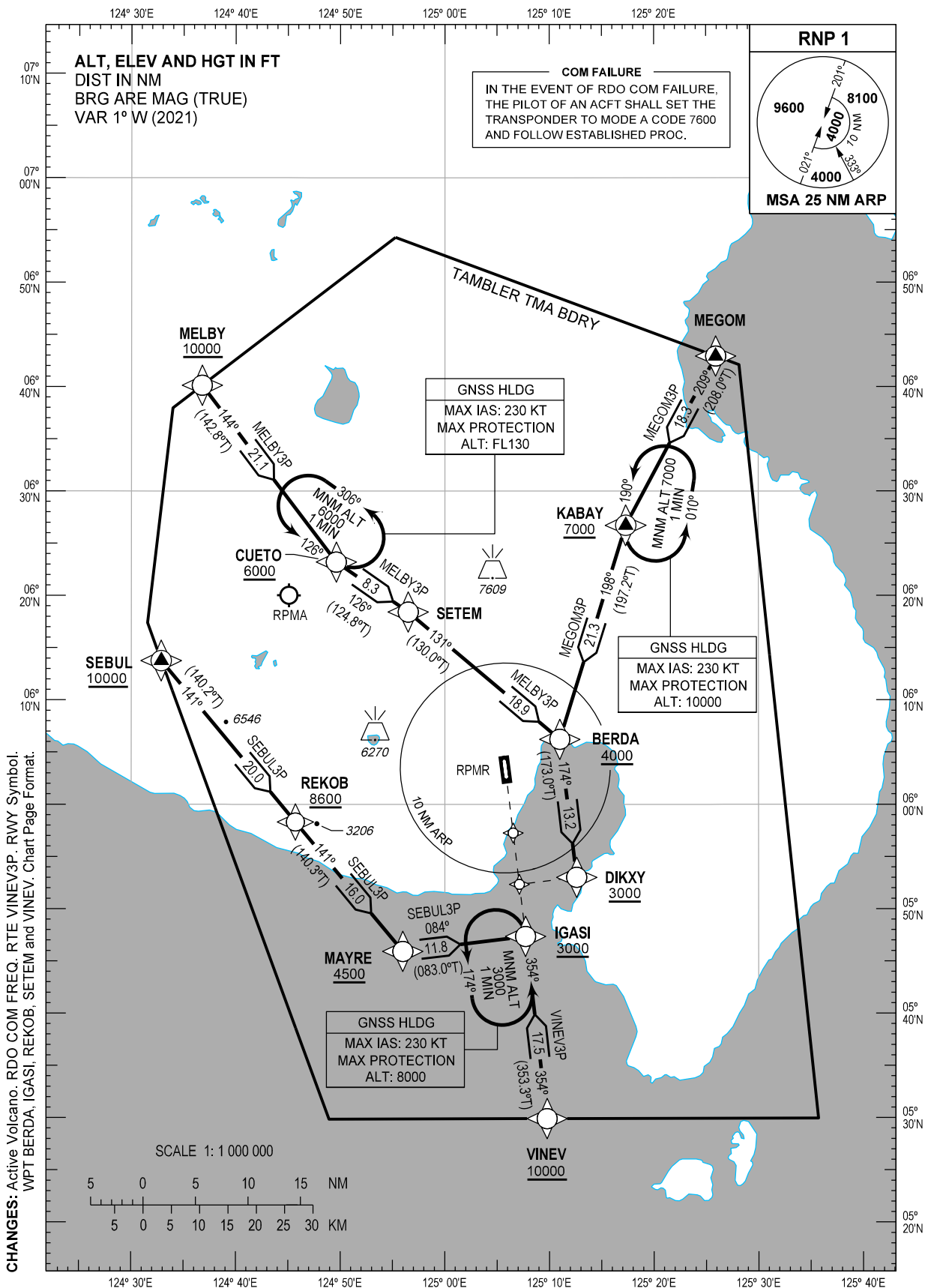


STANDARD ARRIVAL  
CHART - INSTRUMENT  
(STAR) - ICAO

TRANSITION  
ALTITUDE  
11000 FT

ACC - 132.5 / 125.7 (SOUTHEAST)  
- 124.9 / 125.7 (SOUTH)  
- 8942 / 5655 (SEA-2 HF)  
- 8903 (CWP HF)  
APP - 119.1 / 118.2  
TWR - 118.4

GENERAL SANTOS/  
Tambler (RPMR)  
RNP STAR RWY 35  
MEGOM3P MELBY3P  
SEBUL3P VINEV3P



**ARRIVAL ROUTE DESCRIPTION**

STAR	ROUTE	PROCEDURE	REMARKS
MEGOM3P	MEGOM - KABAY - BERDA - DIKXY	From MEGOM, to KABAY at or above 7000 FT, to BERDA at or above 4000 FT, to DIKXY at or above 3000 FT.	
MELBY3P	MELBY - CUETO - SETEM - BERDA - DIKXY	From MELBY at or above 10000 FT, to CUETO at or above 6000 FT, to SETEM, to BERDA at or above 4000 FT, to DIKXY at or above 3000 FT.	
SEBUL3P	SEBUL - REKOB - MAYRE - IGASI	From SEBUL at or above 10000 FT, to REKOB at or above 8600 FT, to MAYRE at or above 4500 FT, to IGASI at or above 3000 FT.	
VINEV3P	VINEV - IGASI	From VINEV at or above 10000 FT, to IGASI at or above 3000 FT.	

**WAYPOINT LIST**

Waypoint Name	Latitude	Longitude	Type
BERDA	060613.7N	1251059.8E	Fly-by
CUETO	062311.9N	1244936.9E	Fly-by
DIKXY	055300.8N	1251236.6E	Fly-by
IGASI	054721.3N	1250743.3E	Fly-by
KABAY	062643.2N	1251719.0E	Fly-by
MAYRE	054555.0N	1245559.1E	Fly-by
MEGOM	064255.5N	1252556.3E	Fly-by
MELBY	064007.5N	1243646.6E	Fly-by
REKOB	055818.4N	1244542.4E	Fly-by
SEBUL	061345.6N	1243252.3E	Fly-by
SETEM	061825.0N	1245629.8E	Fly-by
VINEV	052954.6N	1250946.8E	Fly-by

**PROPOSED CODING FOR ARRIVAL RNP STAR RWY 35**

**Table 1: MEGOM3P**

Serial Number	Path Descriptor	Waypoint Identifier	Flyover	Course °M (°T)	Magnetic Variation (°)	Distance (NM)	Turn Direction	Altitude (FT)	Speed limit (KT)	VPA/TCH	Navigation Specification	Transition Identifier
10	IF	MEGOM	-	-	-	-	-	-	-	-	RNP1	RW35
20	TF	KABAY	-	209 (208.0)	+1	18.3	-	+7000	-	-	RNP1	RW35
30	TF	BERDA	-	198 (197.2)	+1	21.3	-	+4000	-	-	RNP1	RW35
40	TF	DIKXY	-	174 (173.0)	+1	13.2	-	+3000	-	-	RNP1	RW35

CHANGES: RTE and PROC Description. WPT BERDA. WPT List. Proposed coding. Page Format.

**Table 2: MELBY3P**

Serial Number	Path Descriptor	Waypoint Identifier	Flyover	Course °M (°T)	Magnetic Variation (°)	Distance (NM)	Turn Direction	Altitude (FT)	Speed limit (KT)	VPA/TCH	Navigation Specification	Transition Identifier
10	IF	MELBY	-	-	-	-	-	+10000	-	-	RNP1	RW35
20	TF	CUETO	-	144 (142.8)	+1	21.1	-	+6000	-	-	RNP1	RW35
30	TF	SETEM	-	126 (124.8)	+1	8.3	-	-	-	-	RNP1	RW35
40	TF	BERDA	-	131 (130.0)	+1	18.9	-	+4000	-	-	RNP1	RW35
50	TF	DIKXY	-	174 (173.0)	+1	13.2	-	+3000	-	-	RNP1	RW35

**Table 3: SEBUL3P**

Serial Number	Path Descriptor	Waypoint Identifier	Flyover	Course °M (°T)	Magnetic Variation (°)	Distance (NM)	Turn Direction	Altitude (FT)	Speed limit (KT)	VPA/TCH	Navigation Specification	Transition Identifier
10	IF	SEBUL	-	-	-	-	-	+10000	-	-	RNP1	RW35
20	TF	REKOB	-	141 (140.2)	+1	20.0	-	+8600	-	-	RNP1	RW35
30	TF	MAYRE	-	141 (140.3)	+1	16.0	-	+4500	-	-	RNP1	RW35
40	TF	IGASI	-	084 (083.0)	+1	11.8	-	+3000	-	-	RNP1	RW35

**Table 4: VINEV3P**

Serial Number	Path Descriptor	Waypoint Identifier	Flyover	Course °M (°T)	Magnetic Variation (°)	Distance (NM)	Turn Direction	Altitude (FT)	Speed limit (KT)	VPA/TCH	Navigation Specification	Transition Identifier
10	IF	VINEV	-	-	-	-	-	+10000	-	-	RNP1	RW35
20	TF	IGASI	-	354 (353.3)	+1	17.5	-	+3000	-	-	RNP1	RW35

**CHANGES:** RTE VINEV3P. WPT BERDA, IGASI, REKOB and SETEM. Page Format.