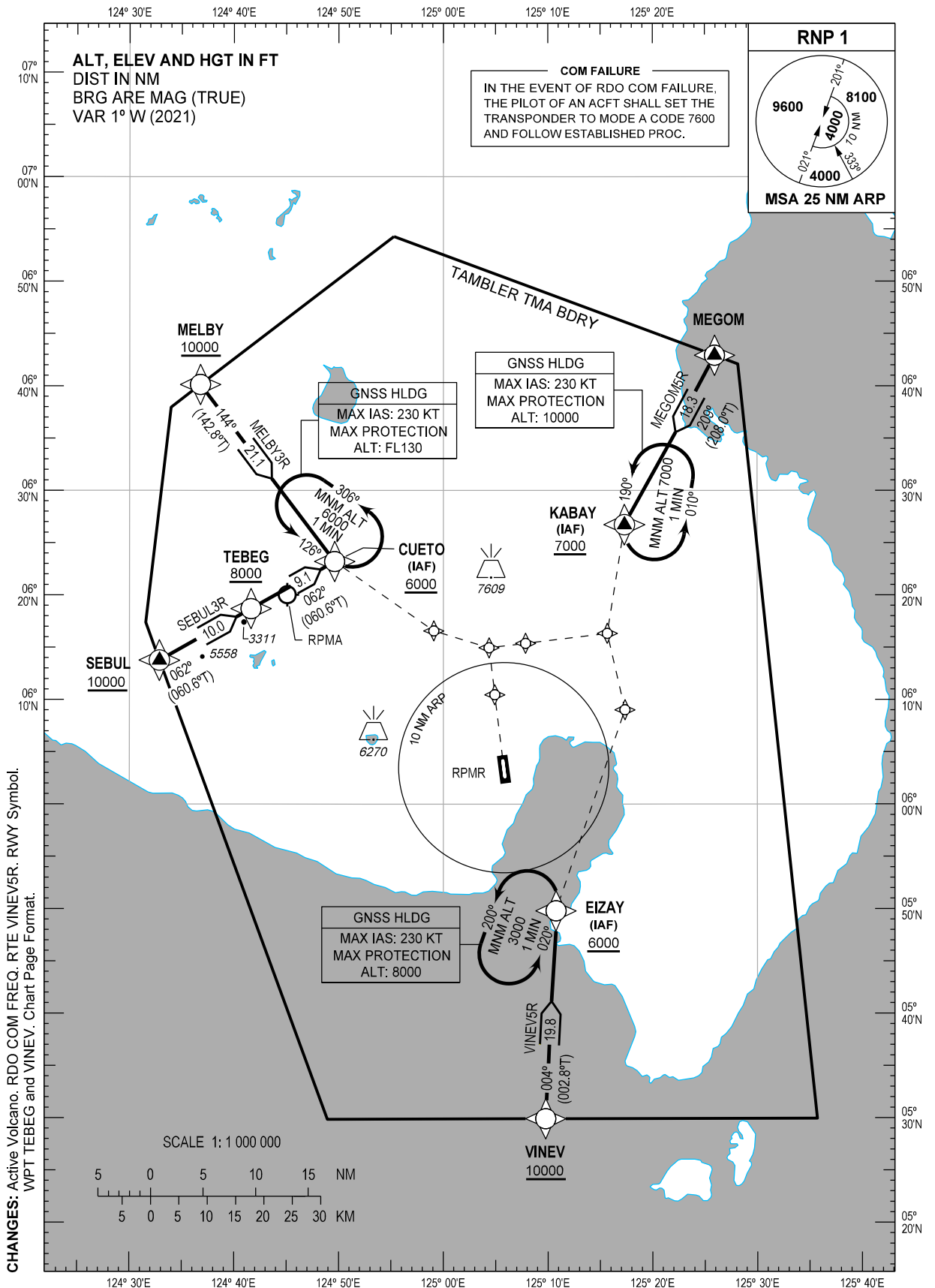


STANDARD ARRIVAL  
CHART - INSTRUMENT  
(STAR) - ICAO

TRANSITION  
ALTITUDE  
11000 FT

ACC - 132.5 / 125.7 (SOUTHEAST)  
- 124.9 / 125.7 (SOUTH)  
- 8942 / 5655 (SEA-2 HF)  
- 8903 (CWP HF)  
APP - 119.1 / 118.2  
TWR - 118.4

GENERAL SANTOS/  
Tambler (RPMR)  
RNP STAR RWY 17  
MEGOM5R MELBY3R  
SEBUL3R VINEV5R



**ARRIVAL ROUTE DESCRIPTION**

STAR	ROUTE	PROCEDURE	REMARKS
MEGOM5R	MEGOM - KABAY	From MEGOM, to KABAY at or above 7000 FT.	
MELBY3R	MELBY - CUETO	From MELBY at or above 10000 FT, to CUETO at or above 6000 FT.	
SEBUL3R	SEBUL - TEBEG - CUETO	From SEBUL at or above 10000 FT, to TEBEG at or above 8000 FT, to CUETO at or above 6000 FT.	
VINEV5R	VINEV - EIZAY	From VINEV at or above 10000 FT, to EIZAY at or above 6000 FT.	

**WAYPOINT LIST**

Waypoint Name	Latitude	Longitude	Type
CUETO	062311.9N	1244936.9E	Fly-by
EIZAY	054947.3N	1251045.9E	Fly-by
KABAY	062643.2N	1251719.0E	Fly-by
MEGOM	064255.5N	1252556.3E	Fly-by
MELBY	064007.5N	1243646.6E	Fly-by
SEBUL	061345.6N	1243252.3E	Fly-by
TEBEG	061841.6N	1244137.1E	Fly-by
VINEV	052954.6N	1250946.8E	Fly-by

**PROPOSED CODING FOR ARRIVAL RNP STAR RWY 17**

**Table 1: MEGOM5R**

Serial Number	Path Descriptor	Waypoint Identifier	Flyover	Course °M (°T)	Magnetic Variation (°)	Distance (NM)	Turn Direction	Altitude (FT)	Speed limit (KT)	VPA/TCH	Navigation Specification	Transition Identifier
10	IF	MEGOM	-	-	-	-	-	-	-	-	RNP1	RW17
20	TF	KABAY	-	209 (208.0)	+1	18.3	-	+7000	-	-	RNP1	RW17

**Table 2: MELBY3R**

Serial Number	Path Descriptor	Waypoint Identifier	Flyover	Course °M (°T)	Magnetic Variation (°)	Distance (NM)	Turn Direction	Altitude (FT)	Speed limit (KT)	VPA/TCH	Navigation Specification	Transition Identifier
10	IF	MELBY	-	-	-	-	-	+10000	-	-	RNP1	RW17
20	TF	CUETO	-	144 (142.8)	+1	21.1	-	+6000	-	-	RNP1	RW17

**Table 3: SEBUL3R**

Serial Number	Path Descriptor	Waypoint Identifier	Flyover	Course °M (°T)	Magnetic Variation (°)	Distance (NM)	Turn Direction	Altitude (FT)	Speed limit (KT)	VPA/TCH	Navigation Specification	Transition Identifier
10	IF	SEBUL	-	-	-	-	-	+10000	-	-	RNP1	RW17
20	TF	TEBEG	-	062 (060.6)	+1	10.0	-	+8000	-	-	RNP1	RW17
30	TF	CUETO	-	062 (060.6)	+1	9.1	-	+6000	-	-	RNP1	RW17

CHANGES: RTE and PROC Description. WPT TEBEG and VINEV. WPT List. Proposed Coding. Page Format.

**Table 4: VINEV5R**

Serial Number	Path Descriptor	Waypoint Identifier	Flyover	Course °M (°T)	Magnetic Variation (°)	Distance (NM)	Turn Direction	Altitude (FT)	Speed limit (KT)	VPA/TCH	Navigation Specification	Transition Identifier
10	IF	VINEV	-	-	-	-	-	+10000	-	-	RNP1	RW17
20	TF	EIZAY	-	004 (002.8)	+1	19.8	-	+6000	-	-	RNP1	RW17

**CHANGES:** RTE VINEV5R. WPT VINEV. Page Format.