

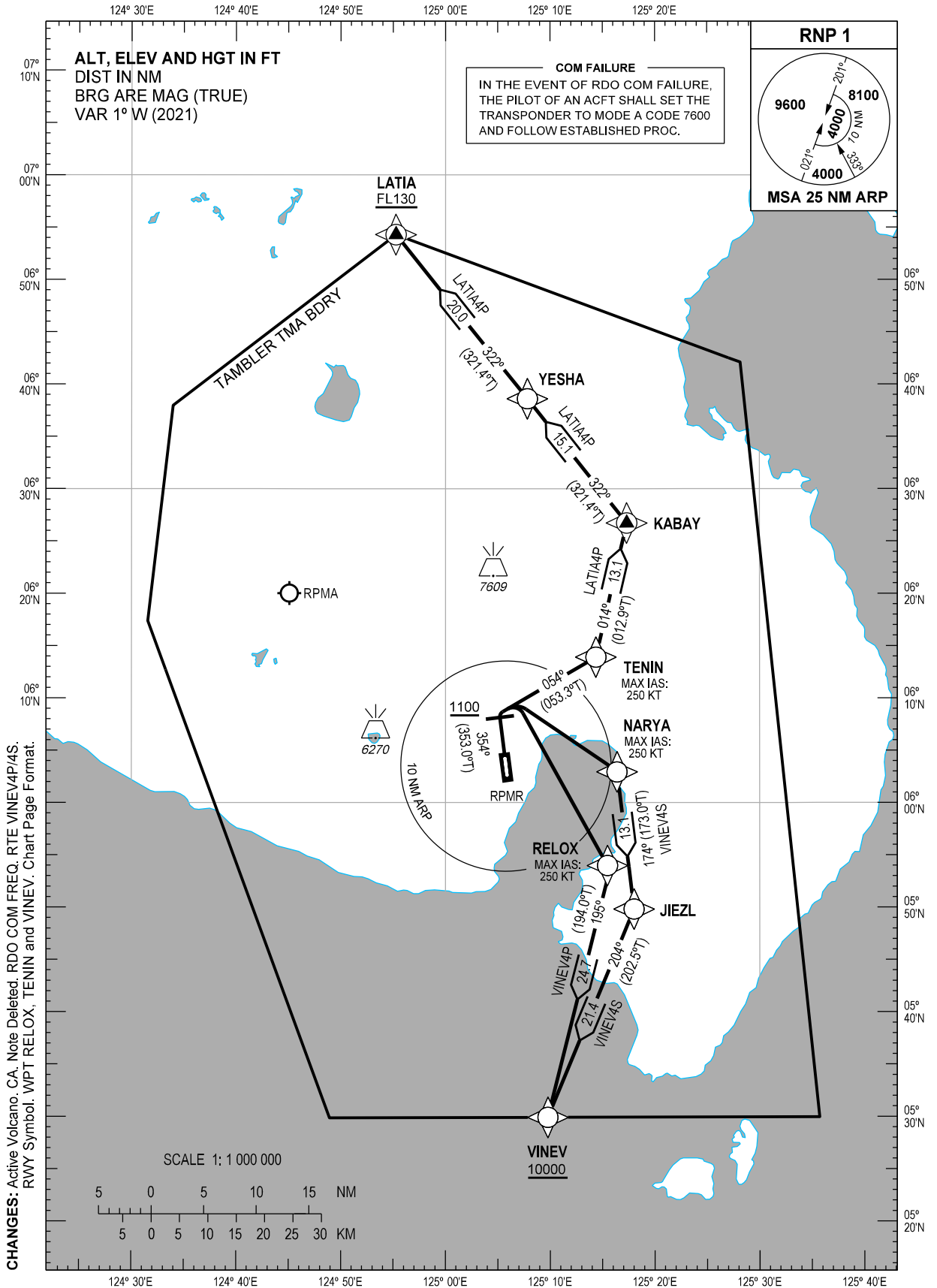
STANDARD DEPARTURE
CHART - INSTRUMENT
(SID) - ICAO

TRANSITION
ALTITUDE
11000 FT

TWR - 118.4
APP - 119.1 / 118.2
ACC - 132.5 / 125.7 (SOUTHEAST)
- 124.9 / 125.7 (SOUTH)
- 8942 / 5655 (SEA-2 HF)
- 8903 (CWP HF)

GENERAL SANTOS/
Tambler (RPMR)
RNP SID RWY 35

LATIA4P VINEV4P/4S



DEPARTURE ROUTE DESCRIPTION

SID	TAKE-OFF	PROCEDURE	REMARKS
LATIA4P	RWY 35	Climb on course 354°M, at 1100 FT turn right to TENIN on course 054°M, to KABAY, to YESHA, to LATIA.	Do not exceed 250 KT until TENIN. (1) PDG of 5.0% until 1100 FT then 3.3%. (2) ATS gradient of 3.4% to reach LATIA at or above FL130.
VINEV4P		Climb on course 354°M, at 1100 FT turn right direct to RELOX, to VINEV.	Do not exceed 250 KT until RELOX. (1) PDG of 5.0% until 1100 FT then 3.3%. (2) ATS gradient of 3.4% to reach VINEV at or above 10000 FT.
VINEV4S		Climb on course 354°M, at 1100 FT turn right direct to NARYA, to JIEZL, to VINEV.	Do not exceed 250 KT until NARYA. PDG of 5.0% until 1100 FT then 3.3%.

WAYPOINT LIST

Waypoint Name	Latitude	Longitude	Type
JIEZL	054949.0N	1251800.5E	Fly-by
KABAY	062643.2N	1251719.0E	Fly-by
LATIA	065417.1N	1245516.5E	Fly-by
NARYA	060255.8N	1251623.2E	Fly-by
RELOX	055358.3N	1251546.8E	Fly-by
TENIN	061354.0N	1251422.3E	Fly-by
VINEV	052954.6N	1250946.8E	Fly-by
YESHA	063835.7N	1250749.7E	Fly-by

PROPOSED CODING FOR DEPARTURE RNP SID RWY 35

Table 1: LATIA4P

Serial Number	Path Descriptor	Waypoint Identifier	Flyover	Course °M (°T)	Magnetic Variation (°)	Distance (NM)	Turn Direction	Altitude (FT)	Speed limit (KT)	VPA/TCH	Navigation Specification	Transition Identifier
10	CA	-	-	354 (353.0)	+1	-	-	+1100	-	-	RNP1	RW35
20	CF	TENIN	-	054 (053.3)	+1	-	-	-	-250	-	RNP1	RW35
30	TF	KABAY	-	014 (012.9)	+1	13.1	-	-	-	-	RNP1	RW35
40	TF	YESHA	-	322 (321.4)	+1	15.1	-	-	-	-	RNP1	RW35
50	TF	LATIA	-	322 (321.4)	+1	20.0	-	+FL130	-	-	RNP1	RW35

CHANGES: RTE and PROC Description. WPT List. WPT RELOX, TENIN and VINEV. Proposed Coding. Page Format.

Table 2: VINEV4P

Serial Number	Path Descriptor	Waypoint Identifier	Flyover	Course °M (°T)	Magnetic Variation (°)	Distance (NM)	Turn Direction	Altitude (FT)	Speed limit (KT)	VPA/TCH	Navigation Specification	Transition Identifier
10	CA	-	-	354 (353.0)	+1	-	-	+1100	-	-	RNP1	RW35
20	DF	RELOX	-	-	-	-	R	-	-250	-	RNP1	RW35
30	TF	VINEV	-	195 (194.0)	+1	24.7	-	+10000	-	-	RNP1	RW35

Table 3: VINEV4S

Serial Number	Path Descriptor	Waypoint Identifier	Flyover	Course °M (°T)	Magnetic Variation (°)	Distance (NM)	Turn Direction	Altitude (FT)	Speed limit (KT)	VPA/TCH	Navigation Specification	Transition Identifier
10	CA	-	-	354 (353.0)	+1	-	-	+1100	-	-	RNP1	RW35
20	DF	NARYA	-	-	-	-	R	-	-250	-	RNP1	RW35
30	TF	JIEZL	-	174 (173.0)	+1	13.1	-	-	-	-	RNP1	RW35
40	TF	VINEV	-	204 (202.5)	+1	21.4	-	+10000	-	-	RNP1	RW35

CHANGES: ALT. RTE VINEV4P/4S. Speed Limit. WPT RELOX and VINEV. Page Format.