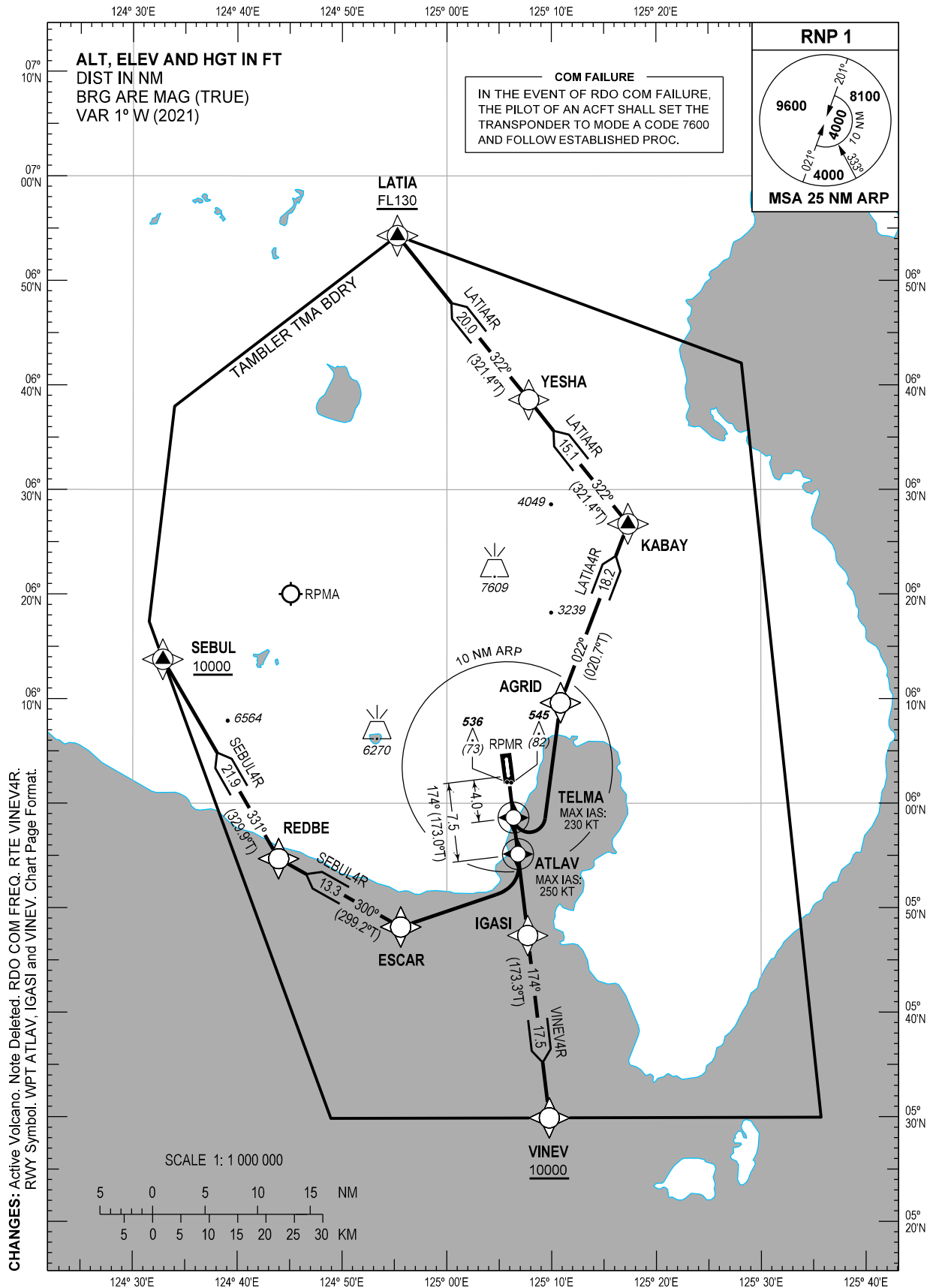


STANDARD DEPARTURE
CHART - INSTRUMENT
(SID) - ICAO

TRANSITION
ALTITUDE
11000 FT

TWR - 118.4
APP - 119.1 / 118.2
ACC - 132.5 / 125.7 (SOUTHEAST)
- 124.9 / 125.7 (SOUTH)
- 8942 / 5655 (SEA-2 HF)
- 8903 (CWP HF)

GENERAL SANTOS/
Tambler (RPMR)
RNP SID RWY 17
LATIA4R SEBUL4R
VINEV4R



DEPARTURE ROUTE DESCRIPTION

| SID | TAKE-OFF | PROCEDURE | REMARKS |
|---------|----------|---|---|
| LATIA4R | RWY 17 | Climb on course 174°M, at <u>TELMA</u> , turn left direct to AGRID, to KABAY, to YESHA, to LATIA. | Do not exceed 230 KT during turn at <u>TELMA</u> . |
| SEBUL4R | | Climb on course 174°M, at <u>ATLAV</u> , turn right direct to ESCAR, to REDBE, to SEBUL. | Do not exceed 250 KT during turn at <u>ATLAV</u> . |
| VINEV4R | | Climb on course 174°M, at <u>TELMA</u> , fly direct to IGASI, to VINEV. | ATS gradient of 4.8% to reach VINEV at or above 10000 FT. |

WAYPOINT LIST

| Waypoint Name | Latitude | Longitude | Type |
|---------------|-----------|------------|---------|
| AGRID | 060936.6N | 1251051.2E | Fly-by |
| ATLAV | 055508.3N | 1250647.5E | Flyover |
| ESCAR | 054809.8N | 1245535.6E | Fly-by |
| IGASI | 054721.3N | 1250743.3E | Fly-by |
| KABAY | 062643.2N | 1251719.0E | Fly-by |
| LATIA | 065417.1N | 1245516.5E | Fly-by |
| REDBE | 055441.5N | 1244356.3E | Fly-by |
| SEBUL | 061345.6N | 1243252.3E | Fly-by |
| TELMA | 055837.7N | 1250621.9E | Flyover |
| VINEV | 052954.6N | 1250946.8E | Fly-by |
| YESHA | 063835.7N | 1250749.7E | Fly-by |

PROPOSED CODING FOR DEPARTURE RNP SID RWY 17

Table 1: LATIA4R

| Serial Number | Path Descriptor | Waypoint Identifier | Flyover | Course °M (°T) | Magnetic Variation (°) | Distance (NM) | Turn Direction | Altitude (FT) | Speed limit (KT) | VPA/TCH | Navigation Specification | Transition Identifier |
|---------------|-----------------|---------------------|---------|----------------|------------------------|---------------|----------------|---------------|------------------|---------|--------------------------|-----------------------|
| 10 | CF | TELMA | Y | 174 (173.0) | +1 | 4.0 | - | - | -230 | - | RNP1 | RW17 |
| 20 | DF | AGRID | - | - | - | - | L | - | - | - | RNP1 | RW17 |
| 30 | TF | KABAY | - | 022 (020.7) | +1 | 18.2 | - | - | - | - | RNP1 | RW17 |
| 40 | TF | YESHA | - | 322 (321.4) | +1 | 15.1 | - | - | - | - | RNP1 | RW17 |
| 50 | TF | LATIA | - | 322 (321.4) | +1 | 20.0 | - | +FL130 | - | - | RNP1 | RW17 |

CHANGES: RTE and PROC Description. WPT ATLAV, IGASI and VINEV. WPT List. Proposed Coding. Page Format.

Table 2: SEBUL4R

| Serial Number | Path Descriptor | Waypoint Identifier | Flyover | Course °M (°T) | Magnetic Variation (°) | Distance (NM) | Turn Direction | Altitude (FT) | Speed limit (KT) | VPA/TCH | Navigation Specification | Transition Identifier |
|---------------|-----------------|---------------------|---------|----------------|------------------------|---------------|----------------|---------------|------------------|---------|--------------------------|-----------------------|
| 10 | CF | ATLAV | Y | 174 (173.0) | +1 | 7.5 | - | - | -250 | - | RNP1 | RW17 |
| 20 | DF | ESCAR | - | - | - | - | R | - | - | - | RNP1 | RW17 |
| 30 | TF | REDBE | - | 300 (299.2) | +1 | 13.3 | - | - | - | - | RNP1 | RW17 |
| 40 | TF | SEBUL | - | 331 (329.9) | +1 | 21.9 | - | +10000 | - | - | RNP1 | RW17 |

Table 3: VINEV4R

| Serial Number | Path Descriptor | Waypoint Identifier | Flyover | Course °M (°T) | Magnetic Variation (°) | Distance (NM) | Turn Direction | Altitude (FT) | Speed limit (KT) | VPA/TCH | Navigation Specification | Transition Identifier |
|---------------|-----------------|---------------------|---------|----------------|------------------------|---------------|----------------|---------------|------------------|---------|--------------------------|-----------------------|
| 10 | CF | TELMA | Y | 174 (173.0) | +1 | 4.0 | - | - | - | - | RNP1 | RW17 |
| 20 | DF | IGASI | - | - | - | - | - | - | - | - | RNP1 | RW17 |
| 30 | TF | VINEV | - | 174 (173.3) | +1 | 17.5 | - | +10000 | - | - | RNP1 | RW17 |

CHANGES: RTE VINEV4R. Speed Limit. WPT ATLAV. Page Format.