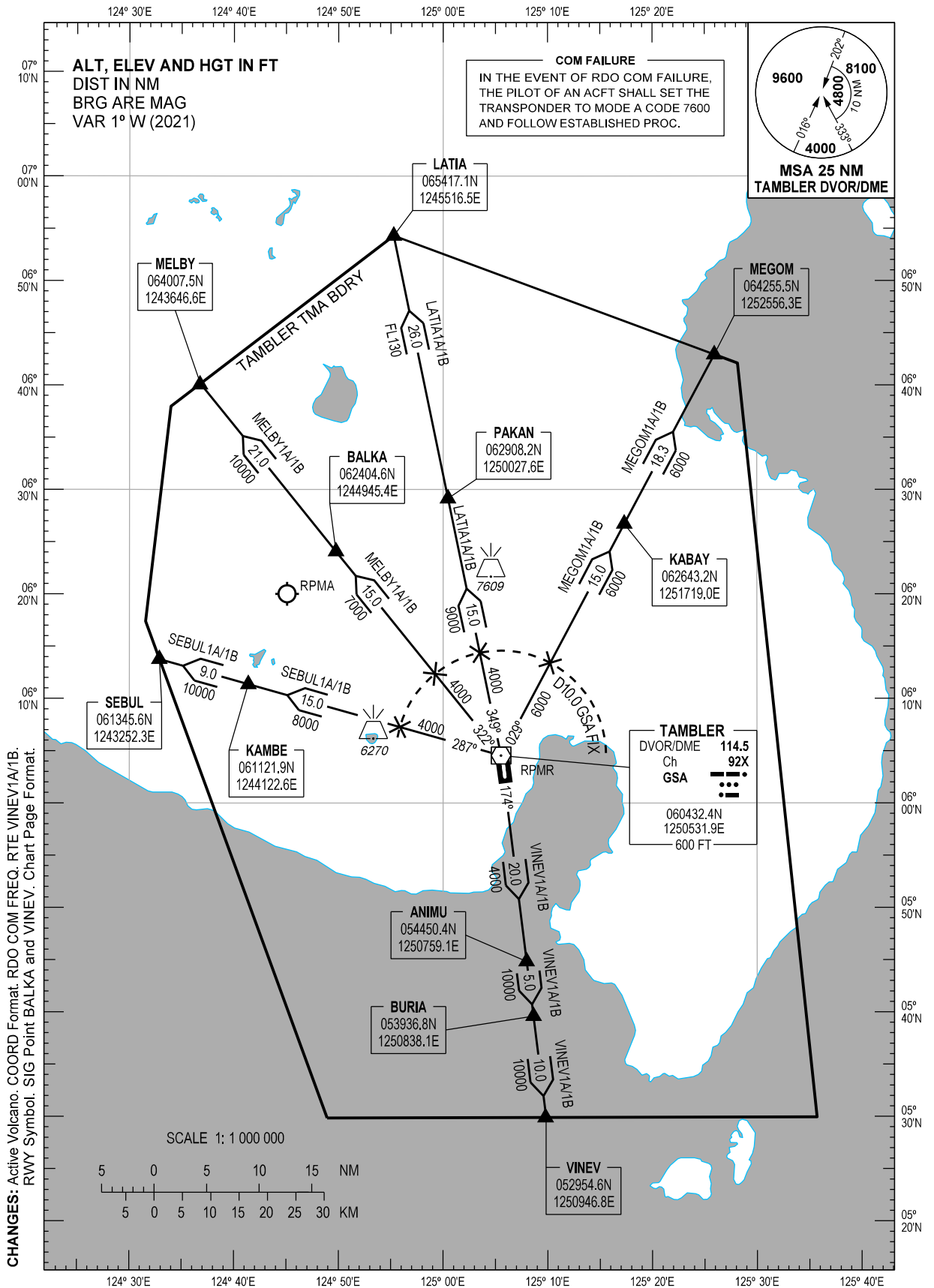


STANDARD DEPARTURE  
CHART - INSTRUMENT  
(SID) - ICAO

TRANSITION  
ALTITUDE  
11000 FT

TWR - 118.4  
APP - 119.1 / 118.2  
ACC - 132.5 / 125.7 (SOUTHEAST)  
- 124.9 / 125.7 (SOUTH)  
- 8942 / 5655 (SEA-2 HF)  
- 8903 (CWP HF)

GENERAL SANTOS/  
Tambler (RPMR)  
RWY 17/35  
LATIA1A/1B MEGOM1A/1B  
MELBY1A/1B SEBUL1A/1B  
VINEV1A/1B



DEPARTURE ROUTE DESCRIPTION

SID	TAKE-OFF	PROCEDURE	REMARKS
LATIA1A	RWY 35 - Right turn within 5.0 NM	Right climbing turn to GSA DVOR/DME. Track-out and climb on GSA DVOR/DME Radial 349 to cross D10.0 GSA DVOR/DME FIX at or above 9000 FT. Continue climb to cross PAKAN at or above FL130. Continue climb to LATIA.	When weather is VMC, climb on course during daytime may be authorized by ATC depending on traffic condition.
LATIA1B	RWY 17 - Left turn within 5.0 NM	Intercept and track-out on GSA DVOR/DME Radial 349 to cross D10.0 GSA DVOR/DME FIX at or above 9000 FT. Continue climb to cross PAKAN at or above FL130. Continue climb LATIA.	
MEGOM1A	RWY 35 - Right turn within 5.0 NM	Intercept and track-out on GSA DVOR/DME Radial 029 to cross D10.0 GSA DVOR/DME FIX at or above 6000 FT. Continue climb to KABAY, to MEGOM.	
MEGOM1B	RWY 17 - Left turn within 5.0 NM		
MELBY1A	RWY 35 - Right turn within 5.0 NM	Intercept and track-out on GSA DVOR/DME Radial 322 to cross D10.0 GSA DVOR/DME FIX at or above 7000 FT. Continue climb to cross BALKA at or above 10000 FT. Continue climb to MELBY.	When weather is VMC, climb on course during daytime may be authorized by ATC depending on traffic condition.
MELBY1B	RWY 17 - Left turn within 5.0 NM		
SEBUL1A	RWY 35 - Right turn within 5.0 NM	Intercept and track-out on GSA DVOR/DME Radial 287 to cross D10.0 GSA DVOR/DME FIX at or above 8000 FT. Continue climb to cross KAMBE at or above 10000 FT. Continue climb to SEBUL.	
SEBUL1B	RWY 17 - Left turn within 5.0 NM		
VINEV1A	RWY 35 - Right turn within 5.0 NM	Intercept and track-out on GSA DVOR/DME Radial 174 to cross ANIMU at or above 10000 FT. Continue climb to BURIA, to VINEV.	
VINEV1B	RWY 17 - Straight out		

CHANGES: SID VINEV1A/1B. SIG Point BALKA and VINEV. Page Format.