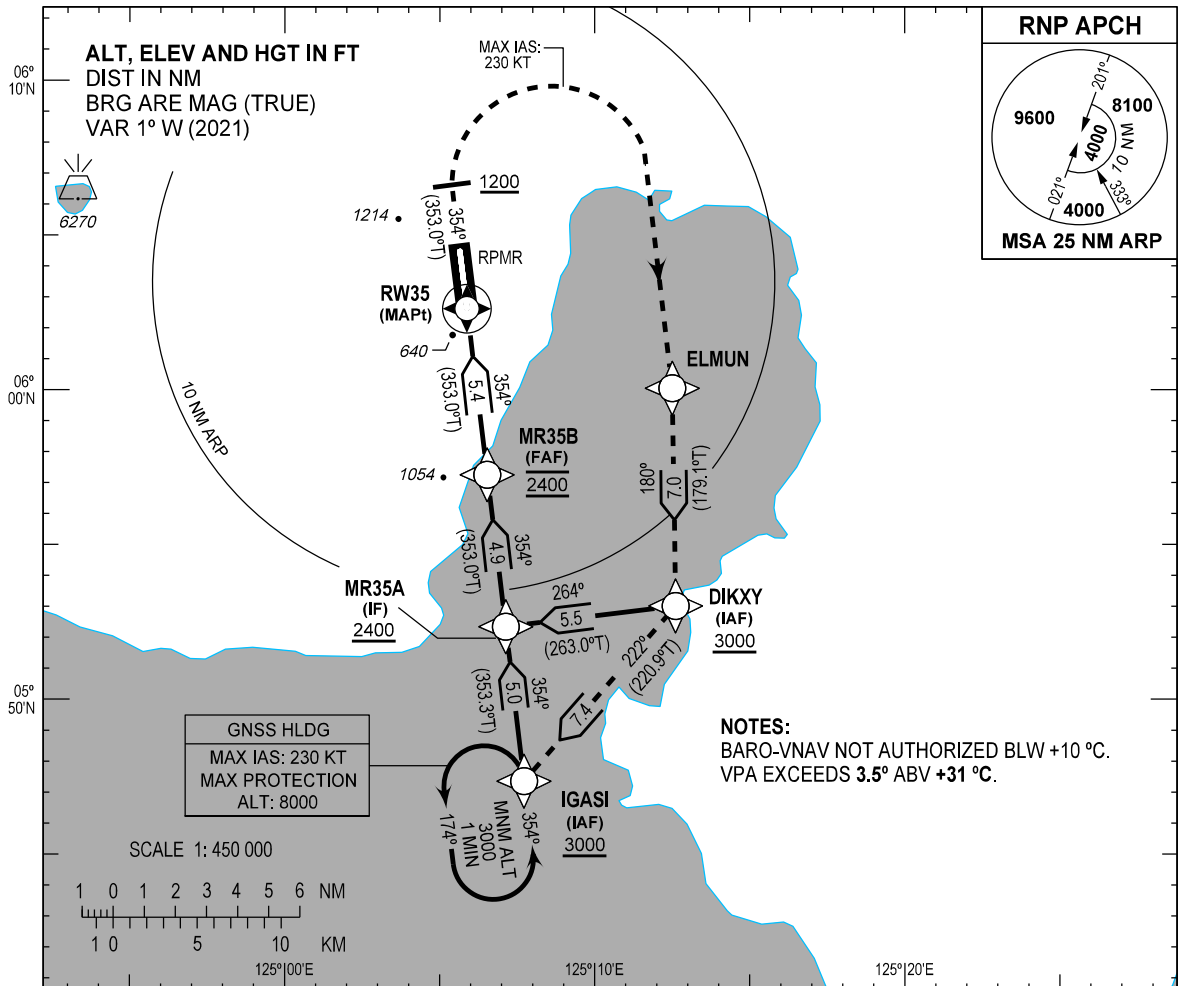


**INSTRUMENT  
APPROACH  
CHART - ICAO**

**AERODROME ELEV 503 FT**  
HEIGHTS RELATED TO  
THR RWY 35 - ELEV 463 FT

APP - 119.1 / 118.2  
TWR - 118.4

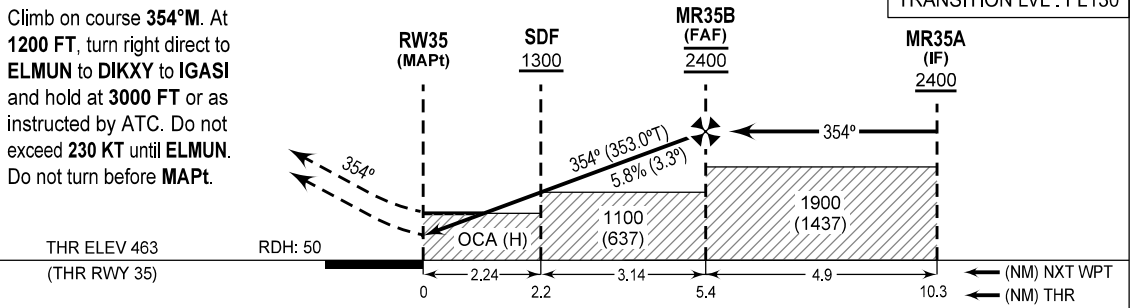
**GENERAL SANTOS/  
Tambler (RPMR)  
RNP RWY 35**



**MISSED APPROACH**

Climb on course **354°M**. At **1200 FT**, turn right direct to **ELMUN** to **DIKXY** to **IGASI** and hold at **3000 FT** or as instructed by ATC. Do not exceed **230 KT** until **ELMUN**. Do not turn before **MAPt**.

TRANSITION ALT : 11000  
TRANSITION LVL : FL130



| OCA (H)   | MISSED APCH CLIMB GRADIENT (%) | A           | B           | C          | D         |
|-----------|--------------------------------|-------------|-------------|------------|-----------|
| LNAV/VNAV | 2.50                           | 840 (377)   | 860 (397)   | 890 (427)  | 930 (467) |
|           | 3.00                           | 780 (317)   | 790 (327)   | 810 (347)  | 840 (377) |
| LNAV      | 2.50                           | 890 (427)   |             | 920 (457)  | 940 (477) |
|           | 3.00                           | 890 (427)   |             | 890 (427)  |           |
| NM TO THR | 5.4                            | 4           | 3           | 2          | 1.1       |
| ALT (HGT) | 2400 (1937)                    | 1920 (1457) | 1570 (1107) | 1220 (757) | 890 (427) |

CHANGES: Active Volcavo, AD Operating Minima Table, APP REQ, CA, Notes, RWY Symbol, WPT ELMUN and IGAZI, Chart Page Format.

**WAYPOINT LIST**

| Waypoint Name | Latitude   | Longitude   | Type    |
|---------------|------------|-------------|---------|
| DIKXY         | 055300.8N  | 1251236.6E  | Fly-by  |
| ELMUN         | 060002.8N  | 1251230.2E  | Fly-by  |
| IGASI         | 054721.3N  | 1250743.3E  | Fly-by  |
| MR35A         | 055220.6N  | 1250707.9E  | Fly-by  |
| MR35B         | 055715.1N  | 1250632.0E  | Fly-by  |
| RW35          | 060237.10N | 1250552.68E | Flyover |

**PROPOSED CODING FOR INSTRUMENT APPROACH RNP RWY 35**

| Serial Number | Path Descriptor | Waypoint Identifier | Flyover | Course °M (°T) | Magnetic Variation (°) | Distance (NM) | Turn Direction | Altitude (FT) | Speed limit (KT) | VPA/TCH | Navigation Specification | Transition Identifier |
|---------------|-----------------|---------------------|---------|----------------|------------------------|---------------|----------------|---------------|------------------|---------|--------------------------|-----------------------|
| 10            | IF              | DIKXY               | -       | -              | -                      | -             | -              | +3000         | -                | -       | RNP APCH                 | DIKXY                 |
| 20            | TF              | MR35A               | -       | 264<br>(263.0) | +1                     | 5.5           | -              | +2400         | -                | -       | RNP APCH                 | DIKXY                 |
| 10            | IF              | IGASI               | -       | -              | -                      | -             | -              | +3000         | -                | -       | RNP APCH                 | IGASI                 |
| 20            | TF              | MR35A               | -       | 354<br>(353.3) | +1                     | 5.0           | -              | +2400         | -                | -       | RNP APCH                 | IGASI                 |
| 10            | IF              | MR35A               | -       | -              | -                      | -             | -              | +2400         | -                | -       | RNP APCH                 | -                     |
| 20            | TF              | MR35B               | -       | 354<br>(353.0) | +1                     | 4.9           | -              | @2400         | -                | -       | RNP APCH                 | -                     |
| 30            | TF              | RW35                | Y       | 354<br>(353.0) | +1                     | 5.4           | -              | @513          | -                | -3.3/-  | RNP APCH                 | -                     |
| 10            | CA              | -                   | -       | 354<br>(353.0) | +1                     | -             | -              | +1200         | -                | -       | RNP APCH                 | -                     |
| 20            | DF              | ELMUN               | -       | -              | -                      | -             | R              | -             | -230             | -       | RNP APCH                 | -                     |
| 30            | TF              | DIKXY               | -       | 180<br>(179.1) | +1                     | 7.0           | -              | -             | -                | -       | RNP APCH                 | -                     |
| 40            | TF              | IGASI               | -       | 222<br>(220.9) | +1                     | 7.4           | -              | +3000         | -                | -       | RNP APCH                 | -                     |

CHANGES: ALT. COORD Format. Speed Limit. WPT ELMUN and IGASI. Page Format.