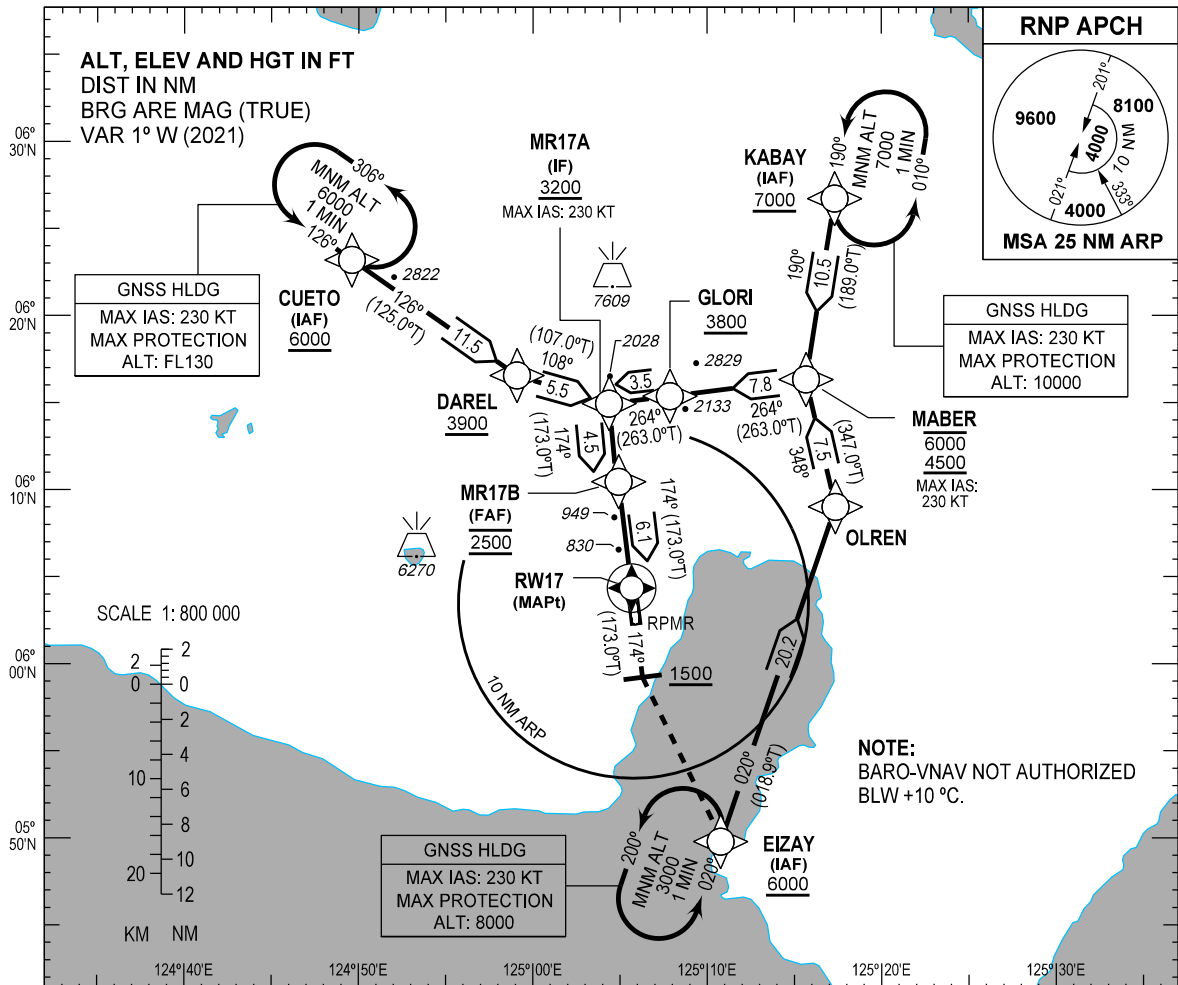


INSTRUMENT
APPROACH
CHART - ICAO

AERODROME ELEV 503 FT
HEIGHTS RELATED TO
THR RWY 17 - ELEV 503 FT

APP - 119.1 / 118.2
TWR - 118.4

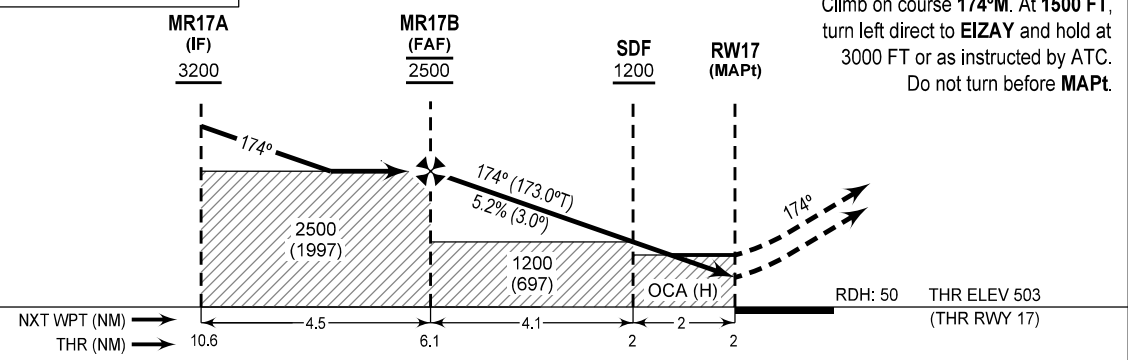
GENERAL SANTOS/
Tambler (RPMR)
RNP RWY 17



TRANSITION ALT : 11000
TRANSITION LVL : FL130

MISSED APPROACH

Climb on course 174°M. At 1500 FT, turn left direct to EIZAY and hold at 3000 FT or as instructed by ATC. Do not turn before MAPt.



NXT WPT (NM)	→	→	→	→	→	→
THR (NM)	→	→	→	→	→	→
OCA (H)	A	B	C	D		
LNAV/VNAV	930 (427)	940 (437)	950 (447)	960 (457)		
LNAV	1080 (577)					
NM TO THR	6.1	5	4	3	2	1.7
ALT (HGT)	2500 (1997)	2150 (1647)	1830 (1327)	1510 (1007)	1190 (687)	1080 (577)

RE-ISSUED CHART

WAYPOINT LIST

Waypoint Name	Latitude	Longitude	Type
CUETO	062311.9N	1244936.9E	Fly-by
DAREL	061633.8N	1245905.4E	Fly-by
EIZAY	054947.3N	1251045.9E	Fly-by
GLORI	061522.5N	1250751.6E	Fly-by
KABAY	062643.2N	1251719.0E	Fly-by
MABER	061619.7N	1251540.3E	Fly-by
MR17A	061456.9N	1250422.3E	Fly-by
MR17B	061027.6N	1250455.2E	Fly-by
OLREN	060901.0N	1251721.5E	Fly-by
RW17	060421.39N	1250539.95E	Flyover

PROPOSED CODING FOR INSTRUMENT APPROACH RNP RWY 17

Serial Number	Path Descriptor	Waypoint Identifier	Flyover	Course °M (°T)	Magnetic Variation (°)	Distance (NM)	Turn Direction	Altitude (FT)	Speed limit (KT)	VPA/TCH	Navigation Specification	Transition Identifier
10	IF	CUETO	-	-	-	-	-	+6000	-	-	RNP APCH	CUETO
20	TF	DAREL	-	126 (125.0)	+1	11.5	-	+3900	-	-	RNP APCH	CUETO
30	TF	MR17A	-	108 (107.0)	+1	5.5	-	+3200	-230	-	RNP APCH	CUETO
10	IF	KABAY	-	-	-	-	-	+7000	-	-	RNP APCH	KABAY
20	TF	MABER	-	190 (189.0)	+1	10.5	-	B 6000 4500	-230	-	RNP APCH	KABAY
30	TF	GLORI	-	264 (263.0)	+1	7.8	-	+3800	-	-	RNP APCH	KABAY
40	TF	MR17A	-	264 (263.0)	+1	3.5	-	+3200	-230	-	RNP APCH	KABAY
10	IF	EIZAY	-	-	-	-	-	+6000	-	-	RNP APCH	EIZAY
20	TF	OLREN	-	020 (018.9)	+1	20.2	-	-	-	-	RNP APCH	EIZAY
30	TF	MABER	-	348 (347.0)	+1	7.5	-	B 6000 4500	-230	-	RNP APCH	EIZAY
40	TF	GLORI	-	264 (263.0)	+1	7.8	-	+3800	-	-	RNP APCH	EIZAY
50	TF	MR17A	-	264 (263.0)	+1	3.5	-	+3200	-230	-	RNP APCH	EIZAY
10	IF	MR17A	-	-	-	-	-	+3200	-230	-	RNP APCH	-
20	TF	MR17B	-	174 (173.0)	+1	4.5	-	@2500	-	-	RNP APCH	-
30	TF	RW17	Y	174 (173.0)	+1	6.1	-	@553	-	-3.0/-	RNP APCH	-

CHANGE: NAV Specification WPT RW17.