

**STANDARD ARRIVAL
CHART - INSTRUMENT
(STAR) - ICAO**

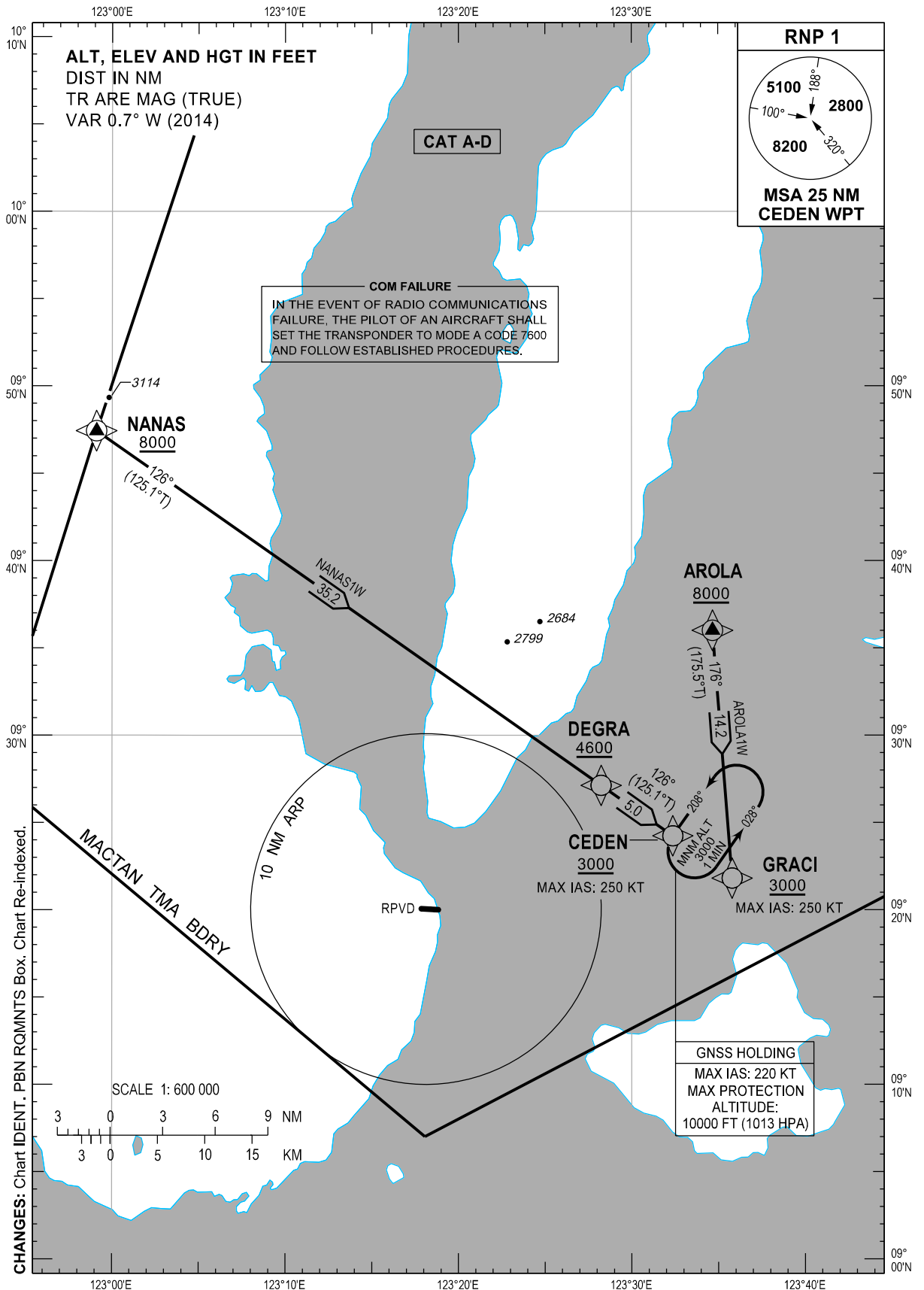
TRANSITION
ALTITUDE
11000 FT

APP - 124.7 / 121.2 (Mactan)
TWR - 129.7 / 123.5

NEGROS ORIENTAL/Dumaguete (RPVD)

RNP STAR RWY 27

AROLA1W NANAS1W



ARRIVAL ROUTE DESCRIPTION

STAR	ROUTE	PROCEDURE	REMARKS
AROLA1W	AROLA - GRACI	From AROLA at or above 8000 FT, to GRACI at or above 3000 FT.	
NANAS1W	NANAS - DEGRA - CEDEN	From NANAS at or above 8000 FT, to DEGRA at or above 4600 FT, to CEDEN at or above 3000 FT.	

WAYPOINT LIST

Waypoint Name	Latitude	Longitude	Type
AROLA	N09 36 01	E123 34 40	Fly-by
CEDEN	N09 24 14	E123 32 22	Fly-by
DEGRA	N09 27 08	E123 28 14	Fly-by
GRACI	N09 21 49	E123 35 48	Fly-by
NANAS	N09 47 26	E122 59 06	Fly-by

PROPOSED CODING FOR ARRIVAL RNP STAR RWY 27

Table 1: AROLA1W

SEQ. NO.	PD	W/P ID	Flyover	Course Track °M (°T)	Magnetic Variation	Distance (NM)	TD	ALT (FT)	Speed (knots)	VPA (°)	Nav. Spec	Transition ID
10	IF	AROLA	N	-	-	-	-	+8000	-	-	RNP1	-
20	TF	GRACI	N	176° (175.5°)	-	14.2	-	+3000	250	-	RNP1	-

Table 2: NANAS1W

SEQ. NO.	PD	W/P ID	Flyover	Course Track °M (°T)	Magnetic Variation	Distance (NM)	TD	ALT (FT)	Speed (knots)	VPA (°)	Nav. Spec	Transition ID
10	IF	NANAS	-	-	-	-	-	+8000	-	-	RNP1	-
20	TF	DEGRA	N	126° (125.1°)	-	35.2	-	+4600	-	-	RNP1	-
30	TF	CEDEN	N	126° (125.1°)	-	5.0	-	+3000	250	-	RNP1	-

CHANGES: ARR RTE Description Table Added. WPT COORD. Coding Table Title. Page Re-indexed.