

STANDARD DEPARTURE  
CHART - INSTRUMENT  
(SID) - ICAO

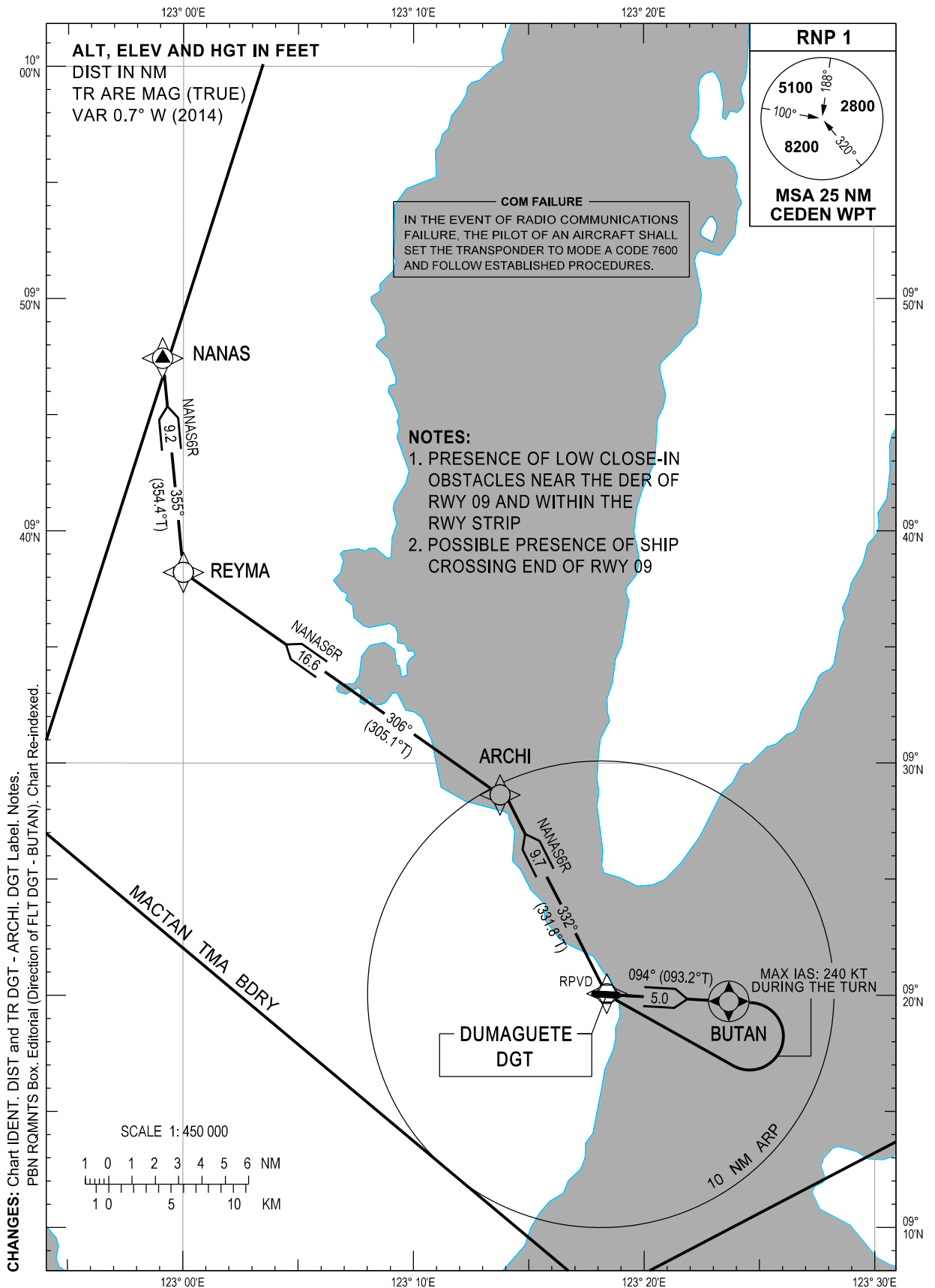
TRANSITION  
ALTITUDE  
11000 FT

TWR - 129.7 / 123.5  
APP - 124.7 / 121.2 (Mactan)

NEGROS ORIENTAL/Dumaguete (RPVD)

RNP SID RWY 09

NANAS6R



**DEPARTURE ROUTE DESCRIPTION**

SID	TAKE-OFF	PROCEDURE	REMARKS
NANAS6R	RWY 09	Climb on course 094°M to BUTAN, turn right direct to DGT, to ARCHI, to REYMA, to NANAS.	Maintain MAX IAS of 240 KT until turn to DGT.

**WAYPOINT LIST**

Waypoint Name	Latitude	Longitude	Type
ARCHI	N09 28 38	E123 13 45	Fly-by
BUTAN	N09 19 44	E123 23 41	Flyover
DGT	N09 20 01.2	E123 18 23.1	Fly-by
NANAS	N09 47 26	E122 59 06	Fly-by
REYMA	N09 38 13	E123 00 01	Fly-by

**PROPOSED CODING FOR DEPARTURE RNP SID RWY 09**

**Table 1: NANAS6R**

SEQ. NO.	PD	W/P ID	Flyover	Course Track °M (°T)	Magnetic Variation	Distance (NM)	TD	ALT (FT)	Speed (knots)	VPA (°)	Nav. Spec	Transition ID
10	CF	BUTAN	Y	094° (093.2°)	-	5.0	-	-	240	-	RNP1	RW09
20	DF	DGT	N	-	-	-	R	-	240	-	RNP1	RW09
30	TF	ARCHI	N	332° (331.8°)	-	9.7	-	-	-	-	RNP1	RW09
40	TF	REYMA	N	306° (305.1°)	-	16.6	L	-	-	-	RNP1	RW09
50	TF	NANAS	N	355° (354.4°)	-	9.2	R	-	-	-	RNP1	RW09

CHANGES: NANAS6R PROC Description. WPT COORD. Coding Table Title. SIG PT ARCHI Course TR and DIST. Page Re-indexed.