

STANDARD DEPARTURE
CHART - INSTRUMENT
(SID) - ICAO

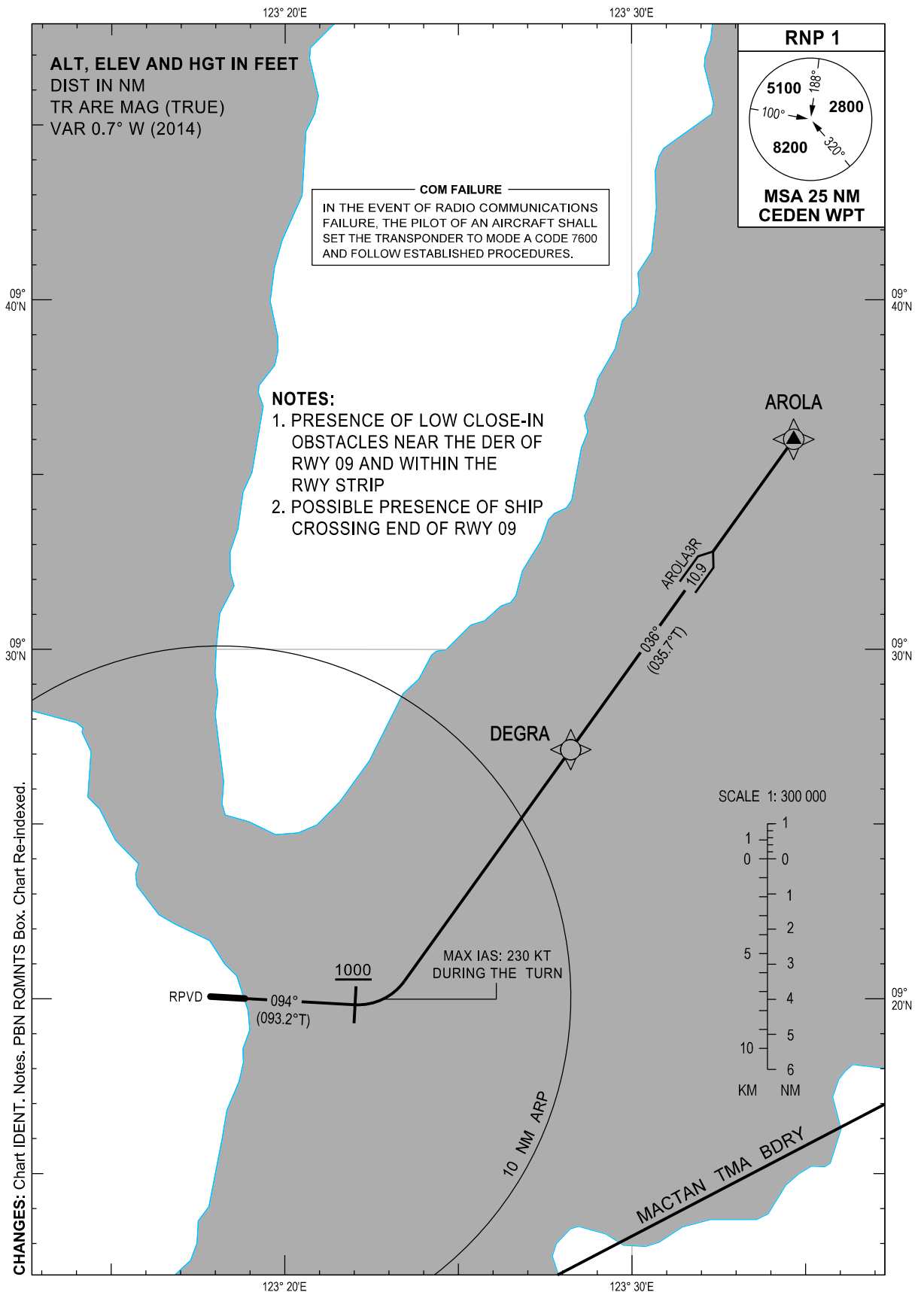
TRANSITION
ALTITUDE
11000 FT

TWR - 129.7 / 123.5
APP - 124.7 / 121.2 (Mactan)

NEGROS ORIENTAL/Dumaguete (RPVD)

RNP SID RWY 09

AROLA3R



DEPARTURE ROUTE DESCRIPTION

SID	TAKE-OFF	PROCEDURE	REMARKS
AROLA3R	RWY 09	Climb on course 094°M, at 1000 FT, turn left direct to DEGRA, to AROLA.	Maintain MAX IAS of 230 KT until turn to DEGRA is completed.

WAYPOINT LIST

Waypoint Name	Latitude	Longitude	Type
AROLA	N09 36 01	E123 34 40	Fly-by
DEGRA	N09 27 08	E123 28 14	Fly-by

PROPOSED CODING FOR DEPARTURE RNP SID RWY 09

Table 1: AROLA3R

SEQ. NO.	PD	W/P ID	Flyover	Course Track °M (°T)	Magnetic Variation	Distance (NM)	TD	ALT (FT)	Speed (knots)	VPA (°)	Nav. Spec	Transition ID
10	CA	-	-	094° (093.2°)	-	-	-	+1000	230	-	RNP1	RW09
20	DF	DEGRA	N	-	-	-	L	-	230	-	RNP1	RW09
30	TF	AROLA	N	036° (035.7°)	-	10.9	-	-	-	-	RNP1	RW09

CHANGES: WPT COORD. Coding Table Title. Page Re-indexed.