

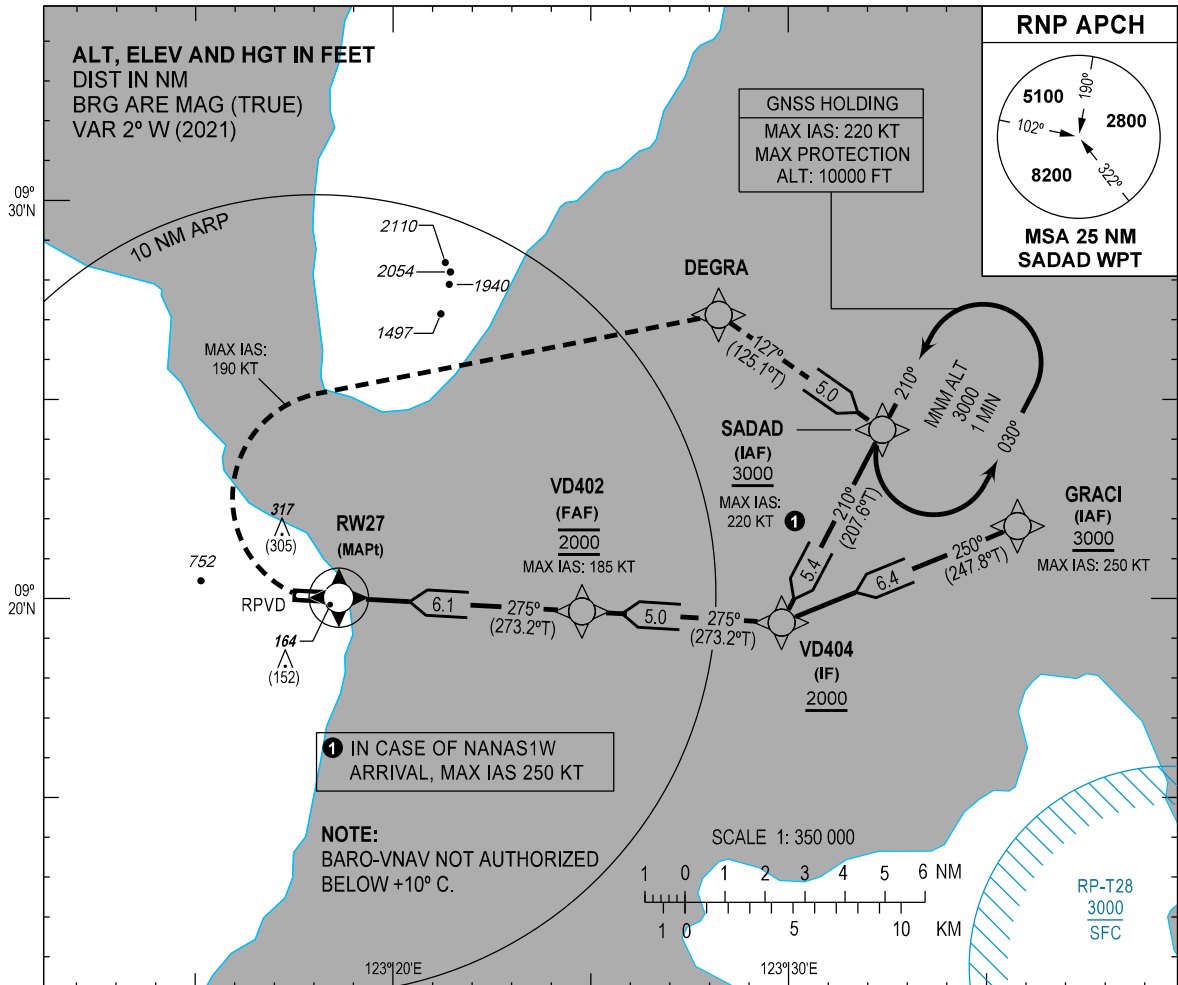
**INSTRUMENT  
APPROACH  
CHART - ICAO**

**AERODROME ELEV 43 FT**

HEIGHTS RELATED TO  
THR RWY 27 - ELEV 12 FT

APP - 124.7 / 121.2 (MACTAN)  
TWR - 129.7 / 123.5

**NEGROS ORIENTAL/  
Dumaguete (RPVD)  
RNP RWY 27**

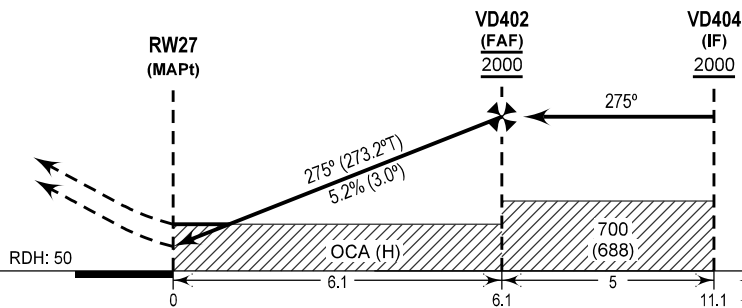


TRANSITION ALT : 11000  
TRANSITION LVL : FL130

**MISSED APPROACH**

At MAPt, turn right direct to DEGRA climbing to 3000 FT to SADAD. Do not exceed 190 KT until end of turn, then 220 KT until SADAD. Do not turn before MAPt.

THR ELEV 12  
(THR RWY 27)



CHANGES: AD OPR Minima Table. GNSS HLDG. Missed Approach PROC. MSA. Note. Profile View. QDR. RP-T28. VAR. Chart Page Format.

OCA (H)	MISSED APPROACH CLIMB GRADIENT (%)	DISTANCE (NM)			
		A	B	C	D
LNAV/VNAV	2.50	420 (408)	580 (568)	870 (858)	910 (898)
	3.00	420 (408)	440 (428)	700 (688)	740 (728)
	3.50	420 (408)		550 (538)	590 (578)
	4.00	420 (408)		420 (408)	450 (438)
	4.50	420 (408)			
LNAV	2.50	420 (408)	540 (528)	930 (918)	970 (958)
	3.00	420 (408)		690 (678)	740 (728)
	3.50	420 (408)		460 (448)	510 (498)
	4.00	420 (408)			

**WAYPOINT LIST**

Waypoint Name	Latitude	Longitude	Type
DEGRA	092707.7N	1232814.2E	Fly-by
GRACI	092149.1N	1233547.6E	Fly-by
RW27	092001.36N	1231837.77E	Flyover
SADAD	092414.3N	1233222.5E	Fly-by
VD402	091940.8N	1232446.7E	Fly-by
VD404	091923.8N	1232949.6E	Fly-by

**PROPOSED CODING FOR INSTRUMENT APPROACH RNP RWY 27**

Serial Number	Path Descriptor	Waypoint Identifier	Flyover	Course °M (°T)	Magnetic Variation (°)	Distance (NM)	Turn Direction	Altitude (FT)	Speed limit (KT)	VPA/TCH	Navigation Specification	Transition Identifier
10	IF	SADAD	-	-	-	-	-	+3000	-250	-	RNP APCH	SADAD
20	TF	VD404	-	210 (207.6)	+2	5.4	-	+2000	-	-	RNP APCH	SADAD
10	IF	GRACI	-	-	-	-	-	+3000	-250	-	RNP APCH	GRACI
20	TF	VD404	-	250 (247.8)	+2	6.4	-	+2000	-	-	RNP APCH	GRACI
10	IF	VD404	-	-	-	-	-	+2000	-	-	RNP APCH	-
20	TF	VD402	-	275 (273.2)	+2	5.0	-	@2000	-185	-	RNP APCH	-
30	TF	RW27	Y	275 (273.2)	+2	6.1	-	@62	-	-3.0/-	RNP APCH	-
10	DF	DEGRA	-	-	-	-	R	-	-	-	RNP APCH	-
20	TF	SADAD	-	127 (125.1)	+2	5.0	-	+3000	-220	-	RNP APCH	-